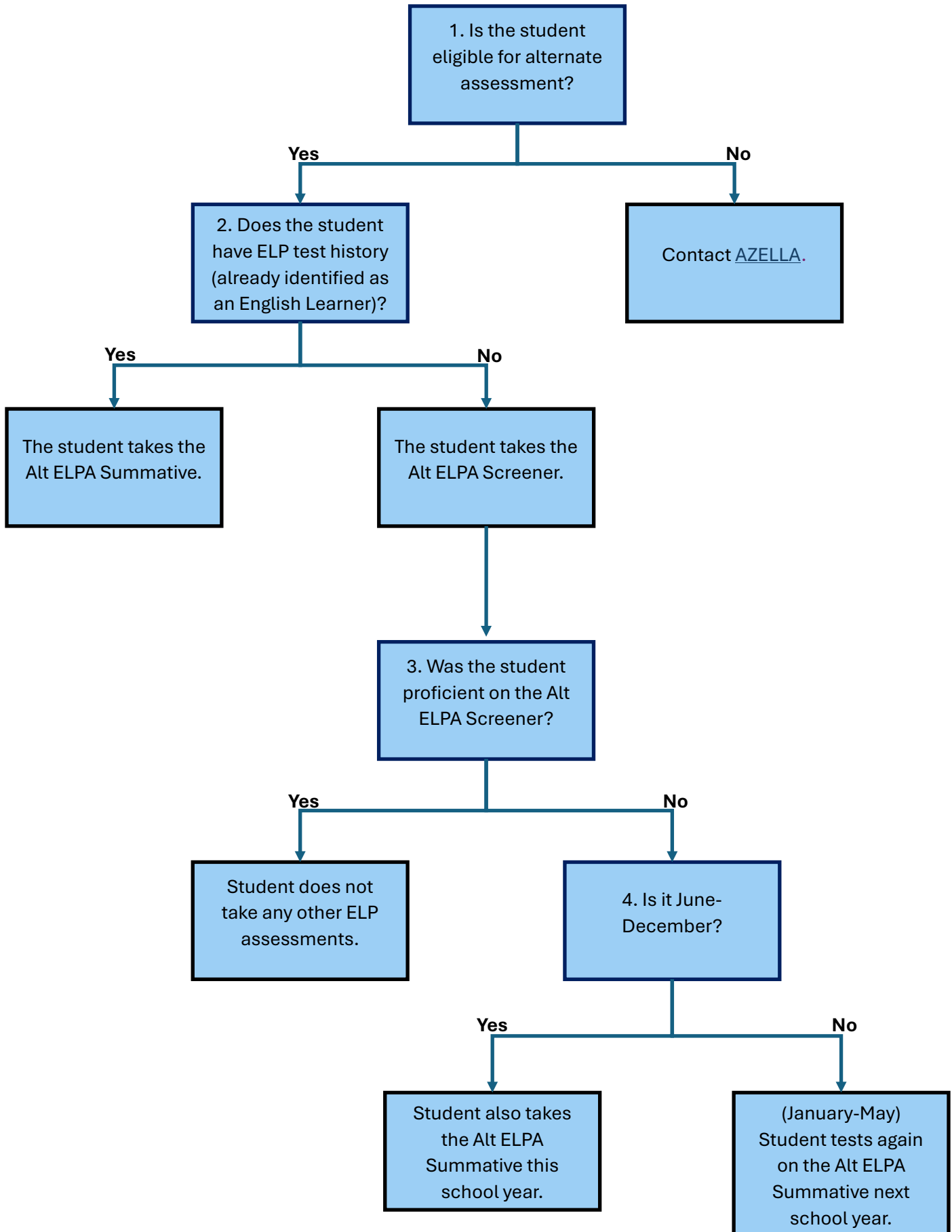


# Alt ELPA Participation Guide



# Alt ELPA Participation Guide Process Outline

## 1. Is the student eligible for alternate assessment?

- If **yes**, proceed to question 2
- If **no**, contact [AZELLA](#)

## 2. Does the student have ELP test history (already identified as an English Learner)?

- If **yes**, the student takes the Alt ELPA Summative
- If **no**, the student takes the Alt ELPA Screener

## 3. Was the student proficient on the Alt ELPA Screener?

- If **yes**, the student does not take any other ELP assessments.
- If **no**, proceed to question 4

## 4. Is it June-December?

- If **yes**, student also takes the Alt ELPA Summative this school year.
- If **no**, (January-May) Student tests again on the Alt ELPA Summative next school year.