

Least Restrictive Environment (LRE) Decision Tree

Table of Contents

Determining Preschool Least Restrictive Environment (LRE) Codes for Children Not Attending Early Childhood Program for AzEDS Reporting	2
Determining Preschool Least Restrictive Environment (LRE) Codes for Children Attending Early Childhood Program for AzEDS Reporting	3
Determining Public School Least Restrictive Environment (LRE) Codes for AzEDS Reporting	4
Determining Residential Treatment Facility (RTC) Least Restrictive Environment (LRE) Codes for AzEDS Reporting	5
Determining Secure Care Least Restrictive Environment (LRE) Codes for AzEDS Reporting	6
Appendix A: Determining Preschool Least Restrictive Environment (LRE) Codes for Children Not Attending Early Childhood Program for AzEDS Reporting	7
Appendix B: Determining Preschool Least Restrictive Environment (LRE) Codes for Children Attending Early Childhood Program for AzEDS Reporting	7
Appendix C: Determining Public School Least Restrictive Environment (LRE) Codes for AzEDS Reporting	7
Appendix D: Determining Residential Treatment Facility (RTC) Least Restrictive Environment (LRE) Codes for AzEDS Reporting	8
Appendix E: Determining Secure Care Least Restrictive Environment (LRE) Codes for AzEDS Reporting	8



Determining Preschool Least Restrictive Environment (LRE) Codes for Children Not Attending Early Childhood Program for AzEDS Reporting

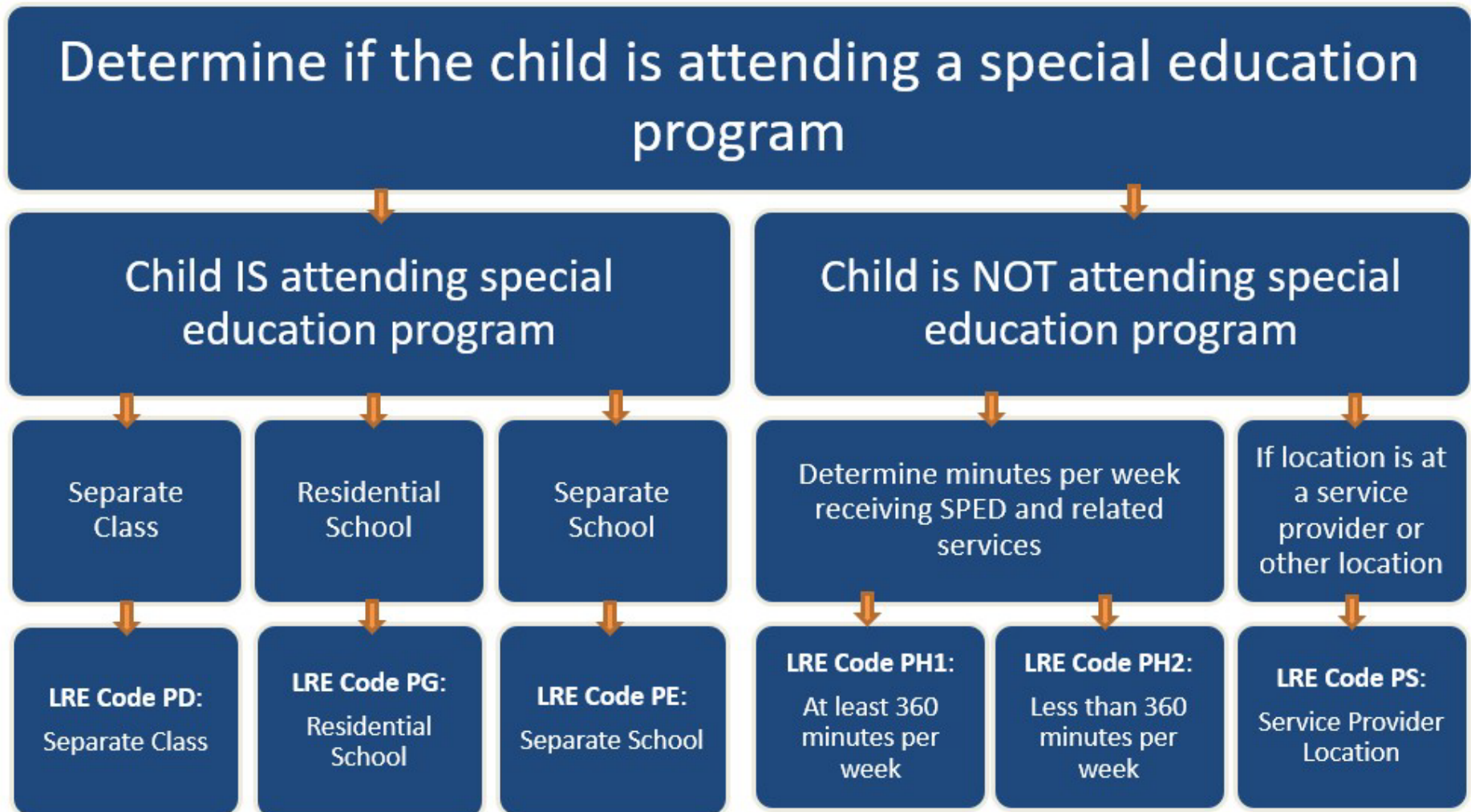


Figure 1: see appendix A for full description

Determining Preschool Least Restrictive Environment (LRE) Codes for Children Attending Early Childhood Program for AzEDS Reporting

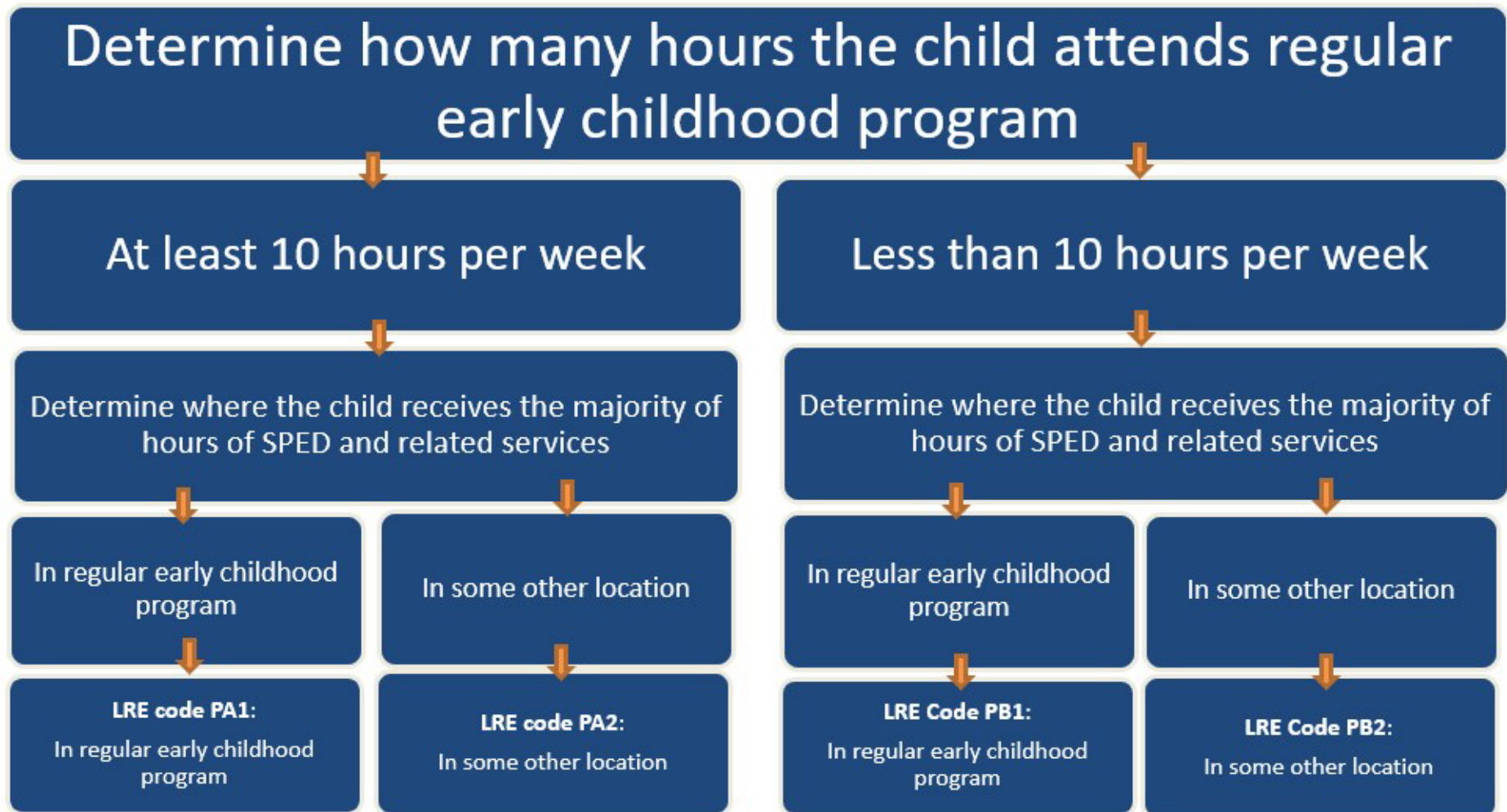


Figure 2: [see Appendix B for full description](#)



Determining Public School Least Restrictive Environment (LRE) Codes for AzEDS Reporting

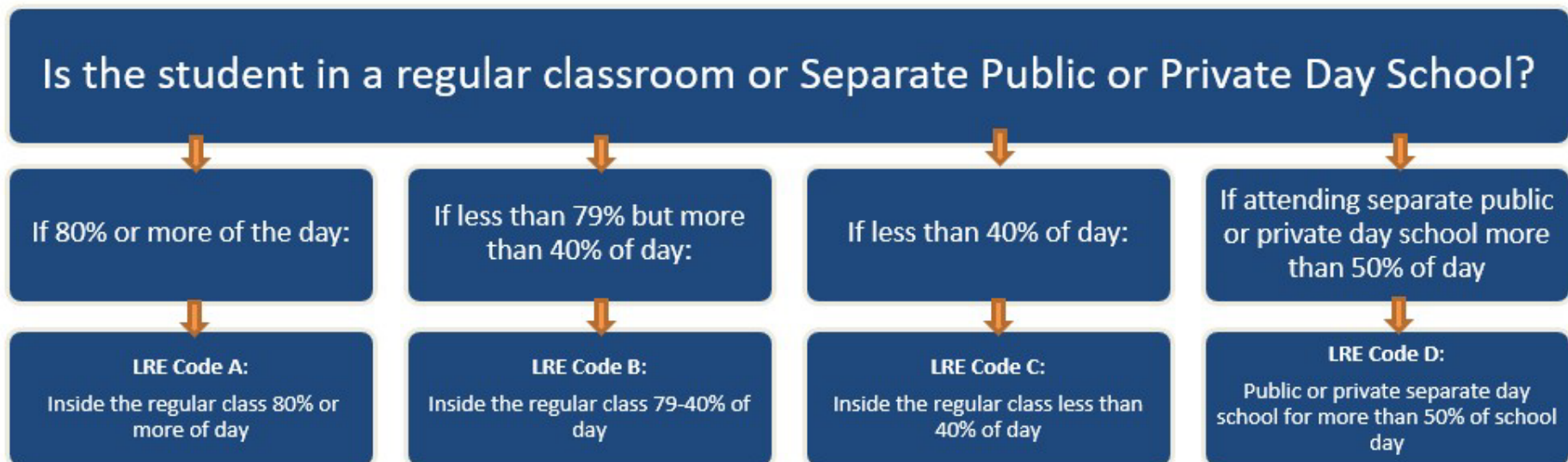


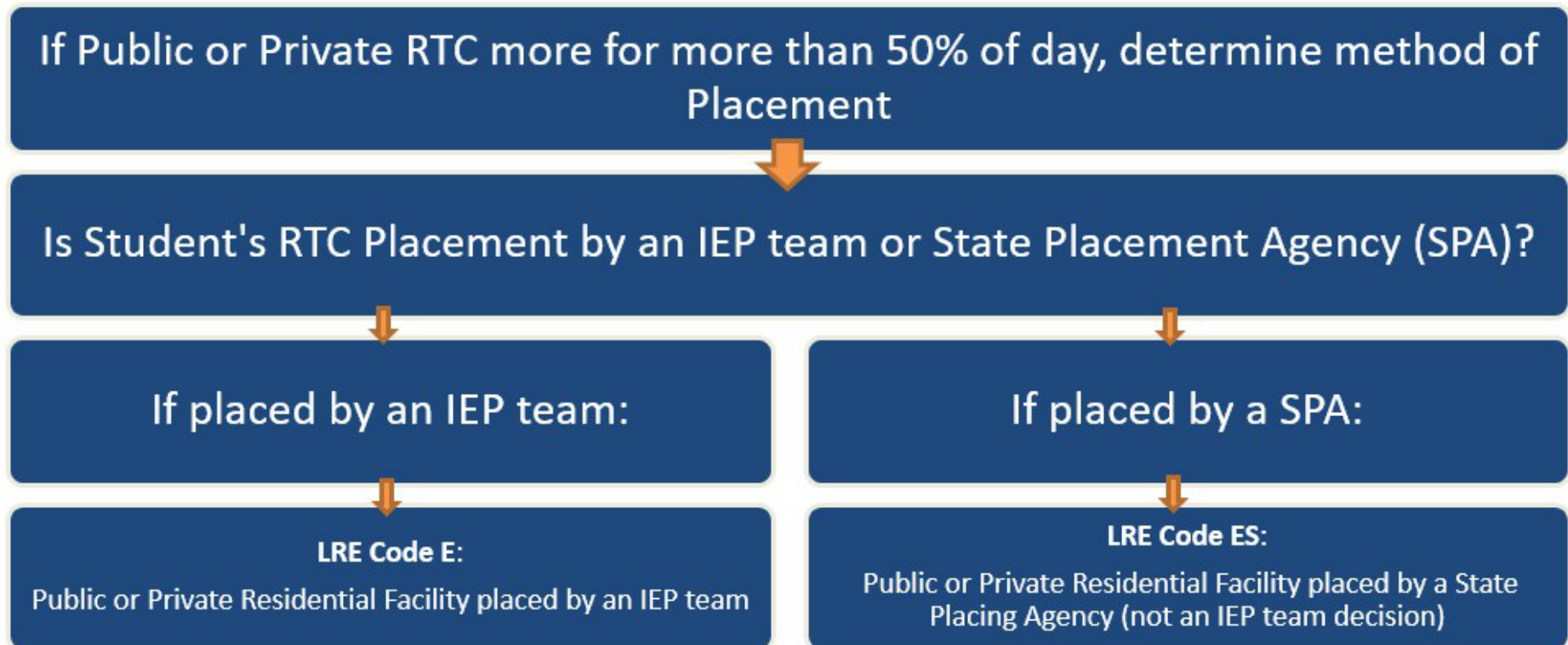
Figure 3: See Appendix C for full description

To calculate the amount of time spent inside the regular classroom, use the following formula:

$$\# \text{ of hours spent in regular class} / \text{total} \# \text{ of hours in regularly scheduled class periods (including lunch, recess, and study periods)} * 100$$

*Time spent outside the regular classroom receiving services unrelated to the student's disability should be considered time inside the regular classroom. Educational time spent in age-appropriate community-based settings that include individuals with and without disabilities should be counted as time spent in the regular classroom.

Determining Residential Treatment Facility (RTC) Least Restrictive Environment (LRE) Codes for AzEDS Reporting



[Figure 4: See Appendix D for full description](#)



Determining Secure Care Least Restrictive Environment (LRE) Codes for AzEDS Reporting



[Figure 5: See Appendix E for full description](#)

Appendix A: Determining Preschool Least Restrictive Environment (LRE) Codes for Children Not Attending Early Childhood Program for AzEDS Reporting

- Determine if the child is attending a special education program
 - If the child is attending a special education program in a separate class, the LRE code is PD: separate class
 - If the child is attending a special education program in a residential school, the LRE code is PG: residential school
 - If the child is attending a special education program in a separate school, the LRE code is PE: separate school
 - If the child is not attending a special education program, determine the minutes per week receiving SPED and related services
 - If the child is receiving at least 360 minutes per week, the LRE code is PH1
 - If the child is receiving less than 360 minutes per week, the LRE code is PH2
 - If the child is not attending a special education program, and the location is at a service provider or other location, the LRE code is PS: Service provider location

[Return to document](#)

Appendix B: Determining Preschool Least Restrictive Environment (LRE) Codes for Children Attending Early Childhood Program for AzEDS Reporting

- Determine how many hours the child attends a regular early childhood program
 - If the child attends at least 10 hours per week, determine where the child receives the majority of hours of SPED and related services
 - If the child receives the services in a regular early childhood program, the LRE code is PA1: In regular early childhood program
 - If the child receives the services in some other location, the LRE code is PA2: In some other location
 - If the child attends less than 10 hours per week, determine where the child receives the majority of hours of SPED and related services
 - If the child receives the services in a regular early childhood program, the LRE code is PB1: In regular early childhood program
 - If the child receives the services in some other location, the LRE code is PB2: In some other location

[Return to document](#)

Appendix C: Determining Public School Least Restrictive Environment (LRE) Codes for AzEDS Reporting

- Determine if the student is in a regular classroom, separate public school, or private day school



- If the student is in a regular classroom 80% or more of the day, use LRE code A: Inside the regular class 80% or more of the day
- If the student is in a regular classroom less than 79% but more than 40% of the day, Use LRE code b: Inside the regular class 79% - 40% of the day
- If the student is in a regular classroom less than 40% of the day, use LRE code C: Inside the regular class less than 40% of the day
- If the student is attending a separate public or private day school more than 50% of the day, use LRE code D: Public or private separate day school for more than 50% of the school day

[Return to document](#)

Appendix D: Determining Residential Treatment Facility (RTC) Least Restrictive Environment (LRE) Codes for AzEDS Reporting

- If public or private RTC for more than 50% of the day, determine the method of placement.
 - Determine if the student's RTC placement is by an IEP team or State Placement Agency
 - If the student was placed by an IEP team, use LRE code E: Public or private residential facility placed by an IEP team
 - If the student was placed by an SPA, use LRE code ES: Public or private residential facility placed by a State Placing Agency (not an IEP team decision)

[Return to document](#)

Appendix E: Determining Secure Care Least Restrictive Environment (LRE) Codes for AzEDS Reporting

- If in a secure care facility, determine the time spent in a regular classroom setting
 - If in a regular classroom setting for 80% or more of the day, use LRE Code FA: Correctional facilities with code A
 - If in a regular classroom setting for less than 79% but more than 40% of the day, use LRE code FB: Correctional facilities with code B
 - If in a regular classroom setting for less than 40% of the day, use LRE code FC: Correctional facilities with code C

