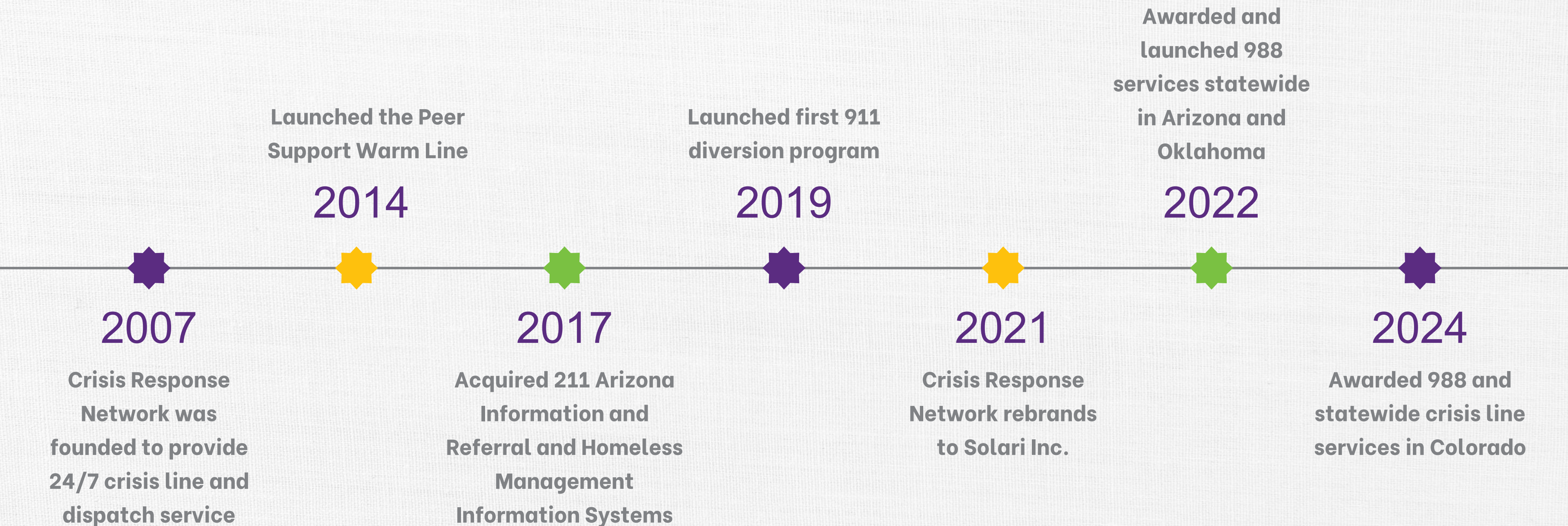




# Solari's Continuum of Services



# History of Solari





# Accessing 988



The 988 Suicide & Crisis Lifeline, provides 24/7, free and confidential support to people in mental health-related distress or suicidal crises.

## Finding Support

- Call or Text: 988 to be connected with your local provider
- Online Chat: [988lifeline.com](https://988lifeline.com)
- Specific Call lines: Press 1 for Veterans, 2 for Spanish, 3 for LGBTQ+



# Statewide Crisis Line

Since 2007, Solari has been providing crisis support to thousands of individuals and families in Arizona. In 2024 Solari started operating the Statewide Crisis Line for Colorado.

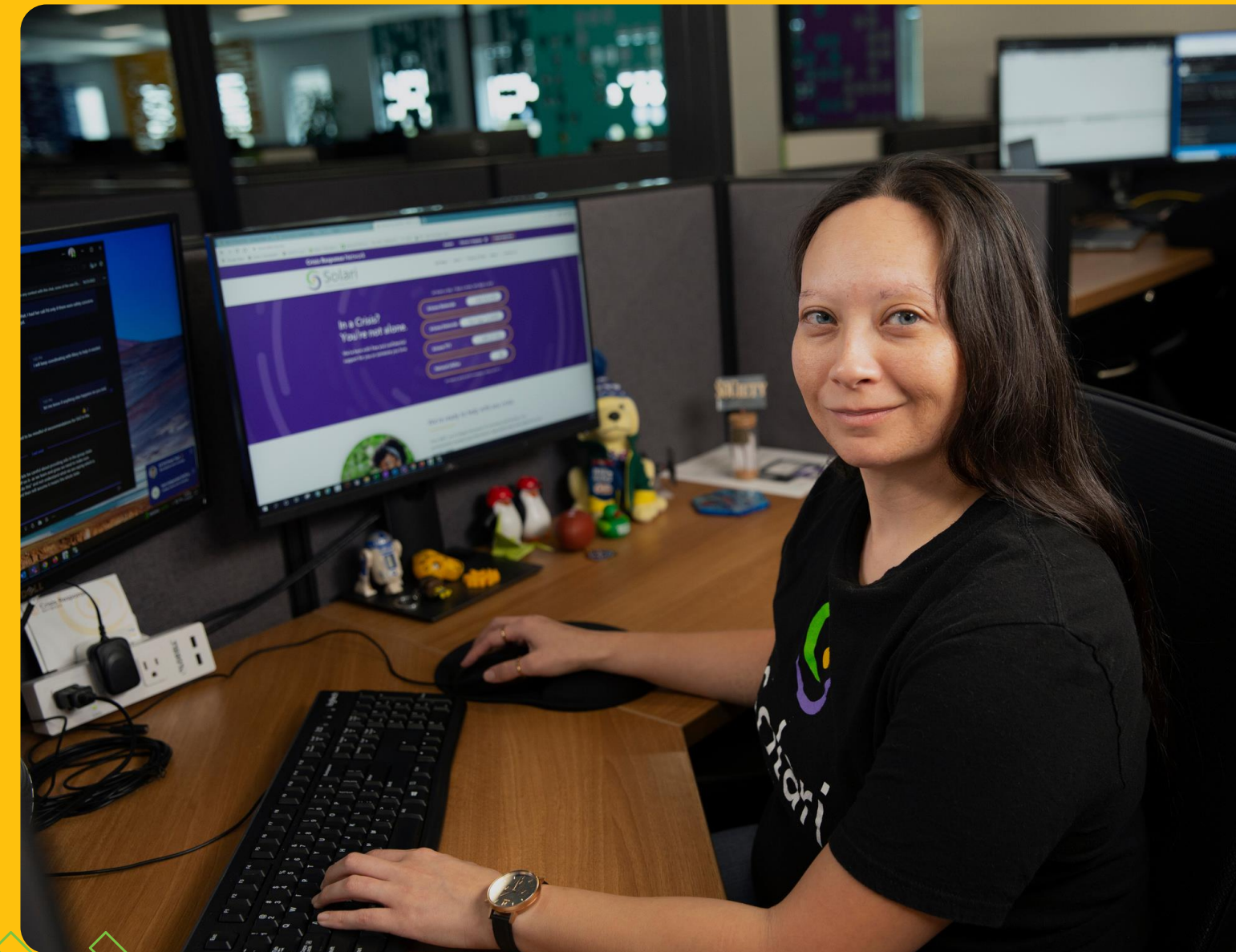
## Finding Local Support:

### Arizona:

- Dial 1-844-534-HOPE
- Text “HOPE” to 4hope (44673)

### Colorado:

- 1-844-493-TALK (8255)
- Text “TALK” to 38255





# Key Differences



## Statewide Crisis Line

988

- Routes directly to Solari
- A person will answer
- Ability to dispatch mobile crisis teams

- You will first hear a recording, “Press 1 for veterans, press 2 for Spanish, press 3 for LGBTQ+...”

Because Solari is the 988 and Statewide provider in Arizona & Colorado, you can expect a consistent response, regardless of what number you call



# Reasons to Call

**Depression**

**Anxiety**

**Relationship/  
Social Concerns**

**Psychosis**

**Coordination of  
Care**

**Self-Harm**

**Suicide**

**Substance Use**

**Danger to Others**



# What to Expect

**Calls/texts are answered quickly by a real person**

**We will ask for name, birthday, and phone number**

**We will also ask if you are thinking about suicide or harming anyone else**

**You can remain anonymous**

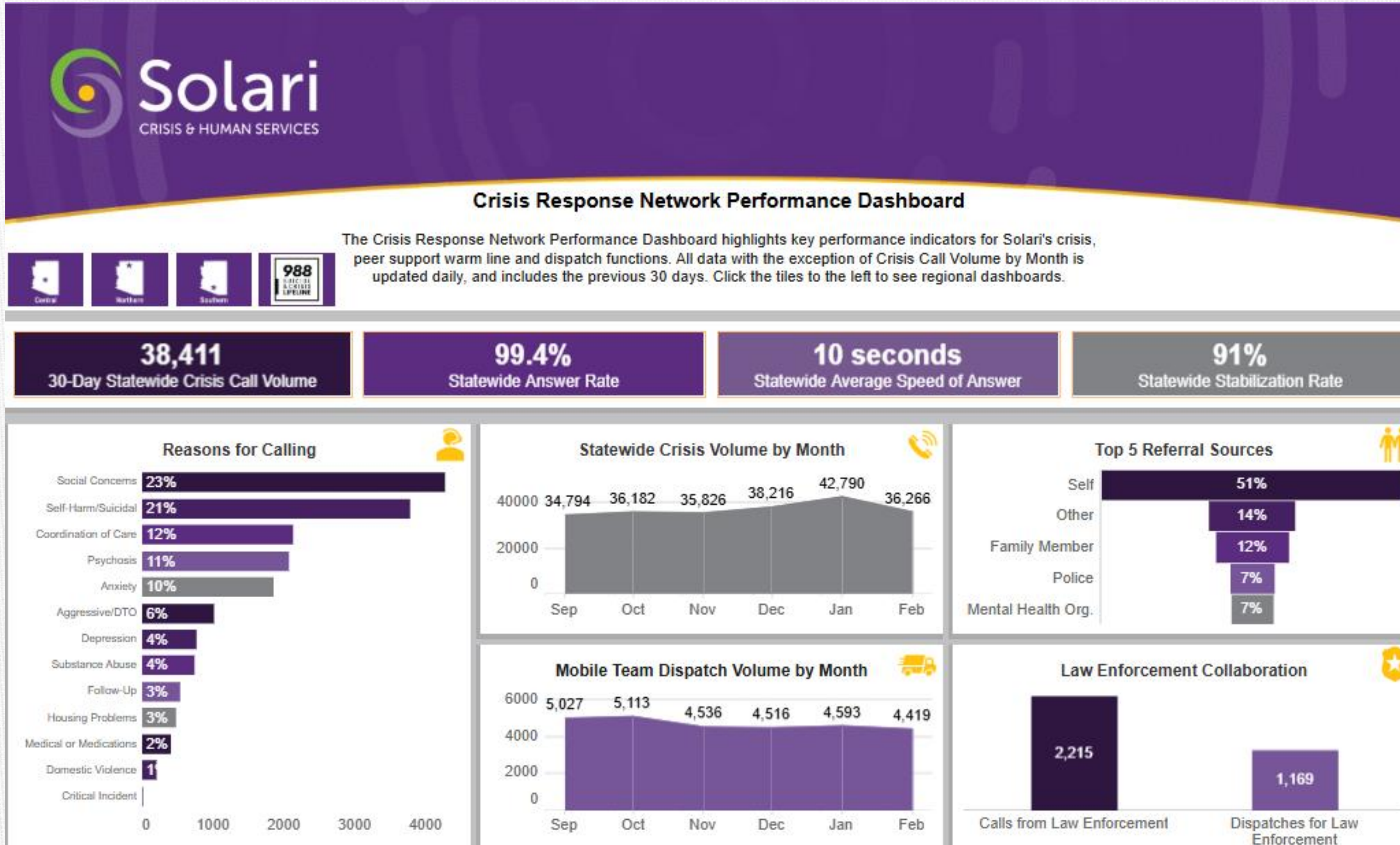
**Information provided is private and confidential**

**Don't wait for a crisis, call early to help prevent a crisis**

**Call as a third party to get information or resources for another person**



# Call Volume





# Dispatching Services

We work with local community providers to dispatch mobile teams of trained Crisis Intervention Specialists to individuals who are experiencing a mental health or substance use crisis.





# Peer Support Warm Line

**We live most of our lives in the spaces between the highs and the lows and that's where the Warm Line can help. Trained Peer Support Specialists are available 24/7 to provide friendly, anonymous support.**

**Whether it's feelings of loneliness or struggles with substance use, our specialists have been there. They can help you steer clear of a crisis before it happens and celebrate the joyful moments.**





# Reasons to Call

**To feel a little less lonely**

**To get some fears or worries off  
your chest**

**To share the excitement of a new  
job or life goal**

**To find local resources and  
support groups**

**To identify coping strategies for  
depression, anxiety, or substance use**



# Local Help Lines

## CRISIS LINE

**24/7 Arizona Statewide  
Crisis Line:**

Dial 1-844-534-HOPE

Text "HOPE" to  
4HOPE(44673)

**24/7 Colorado  
Statewide  
Crisis Line:**

1-844-493-8255

Text "TALK" to 38255

## 988 NATIONAL

**24/7 National Suicide  
and Crisis Lifeline:**

Call or Text 988

## WARM LINE

**Arizona Warm  
Line:**

602-347-1100

**Colorado Support  
Line:**

1-844-493-8255

\*Option 2

## 2-1-1 ARIZONA

**Live Operator Service**

Dial 2-1-1

Call Line Hours:

9 am-7 pm

**24/7 Online Directory**

Visit [211Arizona.org](https://211Arizona.org)



# THANK YOU!



**Shelby Graves, MPH**

Manager, Strategic  
Outreach

---

Shelby.Graves@Solari-inc.org

**[solari-inc.org](https://solari-inc.org)**