



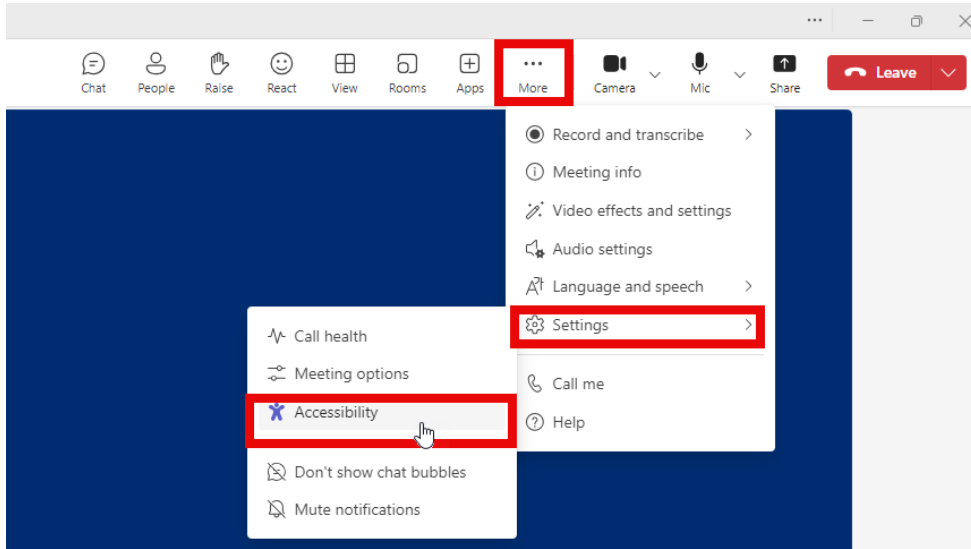
ARIZONA DEPARTMENT OF
EDUCATION

Special Education Data Updates

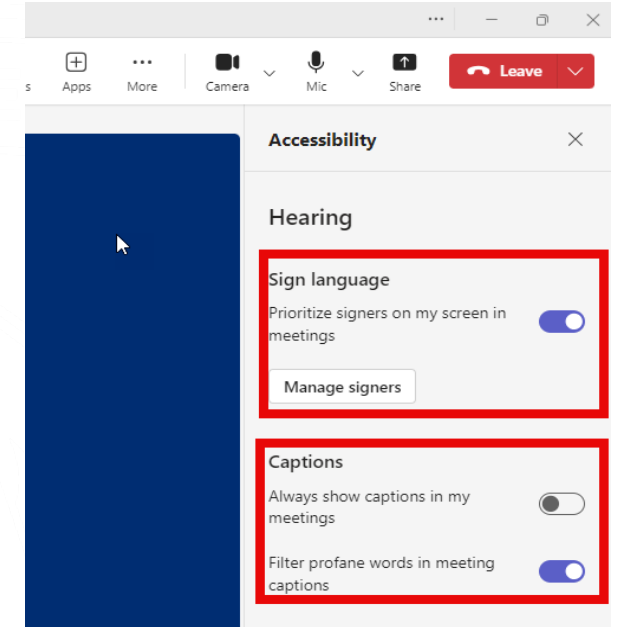
ESS Data Management
November 2024

Before we get started, here are a few reminders:

To use live captions in Teams, go to the meeting controls at the top of the screen and select More > Settings > Accessibility



In the Accessibility options, you can manage how you view the signers (interpreters), if applicable, and turn on captions



- Please stay muted throughout the presentation
- There will be a Q&A session at the end
- We will post this webinar recording on the [ESS Data Management webpage](#)

The use of AI meeting assistants, such as Otter.ai and Chorus.ai, that record audio of the meeting, write notes, capture action items, and generate meeting summaries for virtual meetings is prohibited.

Agenda

- Reminders
- Trending Topics
- SPED Reports 101
- Top 3 Integrity Errors
- Out-of-Scope Topics
- Q&A

Special Education Data Updates

Reminders



Reminders: October 1 Data Collection

- Phase II: Reconciliation
 - November 11: SPED07 Report Available in ODC Application
 - December 11: Due Date
- Phase III: Non-reconciliation (NR)
 - Early January: PEA Notifications
 - January 8: NR opens in ODC
 - February 5: due date

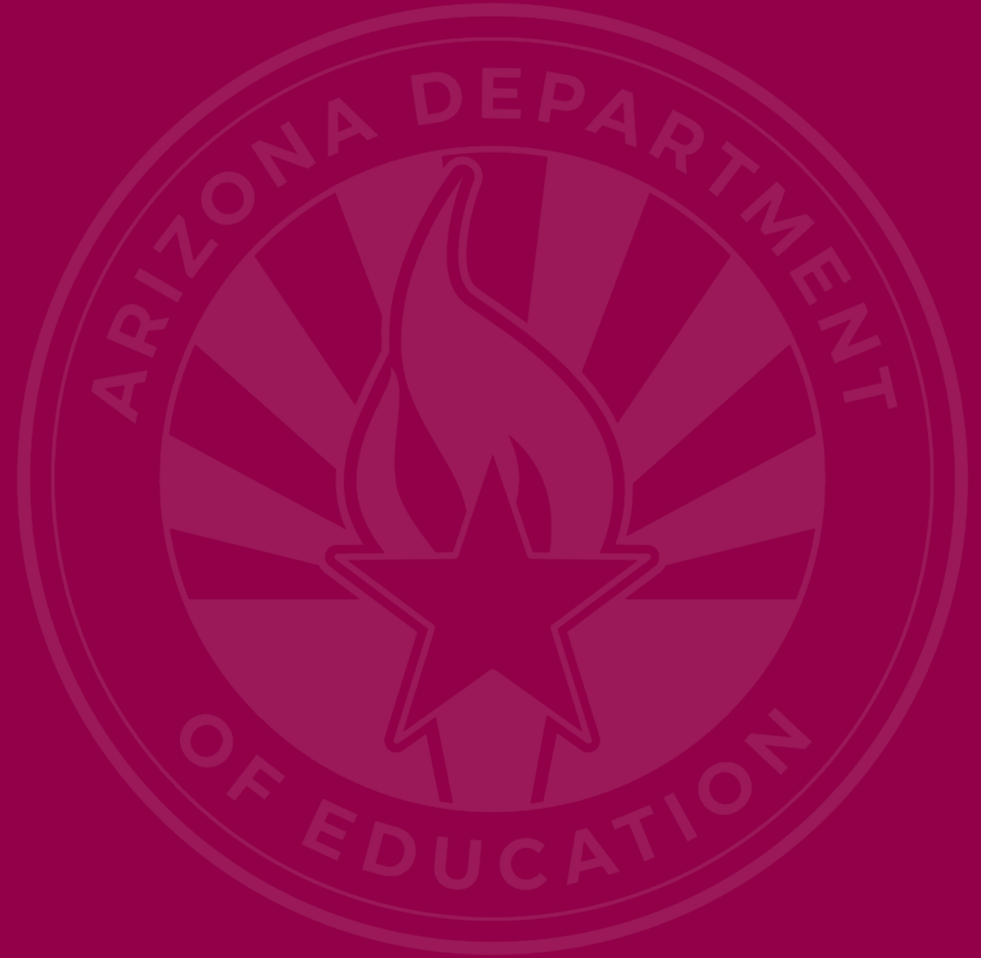


Reminders: Upcoming Training

- ODC Phase II Training
 - Virtual: November 21, 2024
 - ~~In-Person: December 4, 2024~~

Special Education Data Updates

Trending Topics



Trending Topics: Voucher Students

- AzEDS
- Vouchers
 - [Vouchers website](#)
 - [Vouchers Inbox](#)

Trending Topics: ODC Phase II Overview

- Purpose is to ensure SPED program data aligns with the total child count submitted during phase I.

Trending Topics: ODC Phase II Overview

Cont'd

- How to reconcile:
 - Validate data is accurate
 - Resolve integrity errors
 - Submit missing students
 - Delete students submitted in error
- What happens if you don't reconcile?
 - ODC Phase III: non-reconciliation

Special Education Data Updates

SPED Reports 101



- Available within the October 1 Data Collection application

Agency: Mt Humphrey Unified District (16-02-56-000)

Entity ID	CTDS	Name	Student ID	DOB	Entered	Exited	Category	AgeOnCtDate	Gender	Ethnicity	Race	Grade	ELL	Svc
Age 3-5 (Preschool Only)														
25600	16-02-56-104	America, Captain	123456	7/11/2019	8/12/2024	5/23/2025	DD	5	M	NH	BL	PS	N	PA1
Age 3-5 (Preschool Only)			1											
Age 6-21 (Age 5 KG included)														
25600	16-02-56-104	Commander, Cobra	213478	4/9/2016	8/12/2024	11/21/2025	OHI	8	M	HL	WH	3	N	B
25600	16-02-56-104	Woman, Wonder	241198	7/2/2015	8/12/2024	5/23/2025	SLD	9	F	NH	PI	4	N	A
25600	16-02-56-104	Ranger, Blue	202341	4/13/2013	8/12/2024	5/23/2025	ED	11	M	NH	WH	6	Y	B
25600	16-02-56-104	Man, Invisible	265221	7/7/2012	8/12/2024	5/23/2025	A	12	M	HL	WH	7	N	A
25601	16-02-56-205	Prime, Optimus	199354	10/29/2009	8/12/2024	11/21/2024	SLD	13	M	NH	BL	10	N	B
Age 6-21 (Age 5 KG included)			5											
Total	Agency Total		6											

SPED Reports 101 Document

- Guide to all reports related to Special Education
- SPED Report 101 Document
 - Found on the ESS Data Management website
 - AzEDS SPED Reporting
 - Tools and Resources

How Do I Get Access to SPED Reports?

- You must have an ADEConnect account.
- Request the **AzEDS Data Coordinator: SPED Reports** role from your local ADEConnect Entity Administrator to view AzEDS Reports.
- Email the [ADE Support Inbox](#) for assistance with ADEConnect.
- Email the [ESS Data Management Inbox](#) for assistance with ESS data applications.

Integrity Error -40079

- Error Message
 - Resident School ID must be within the District of Residence.
- Common Issues
 - Reporting the tuitioned-out site as Resident School.
- Possible Solution
 - Identify the site in your district the student would normally attend.
 - Update the Resident School ID
 - Sync to AzEDS

Integrity Error -40055

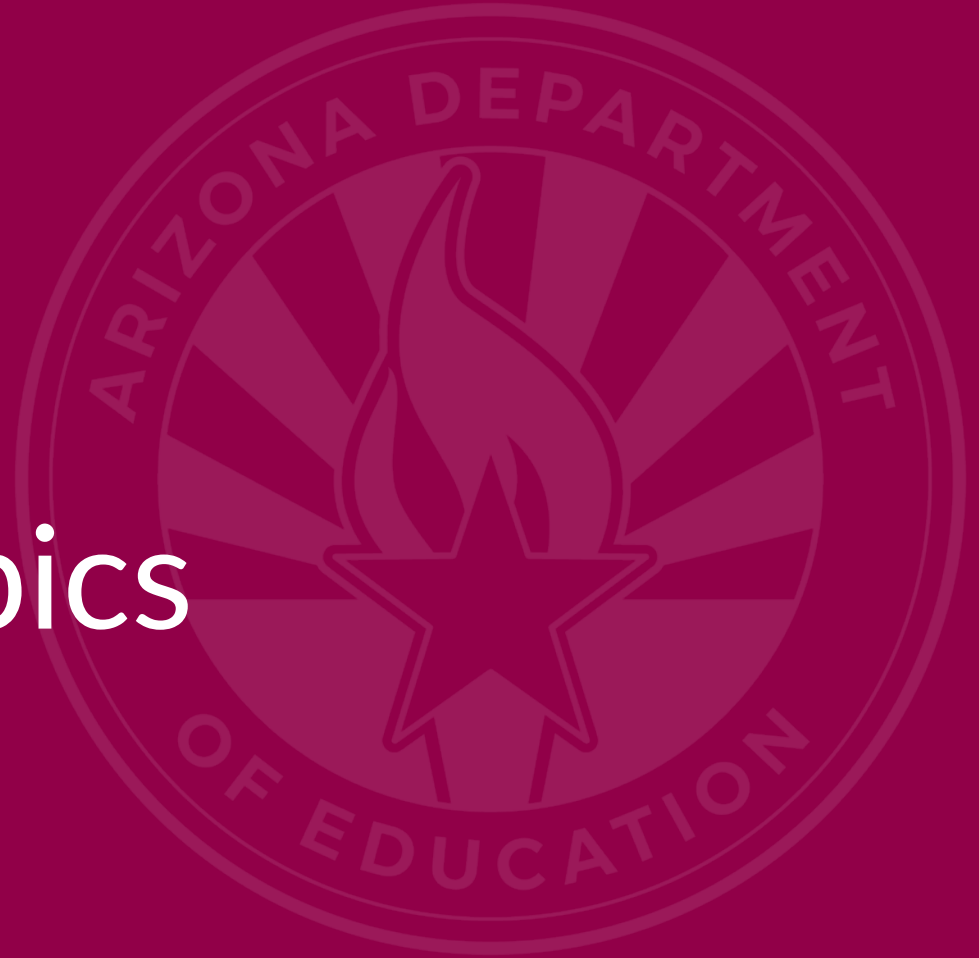
- Error Message
 - Invalid exit code combination; refer to the [SPED Exit Validation matrix](#).
- Common Issues
 - Default EOY settings and transfers
- Possible Solution
 - Cross-reference your AzEDS data and your SIS with the SPED Exit Validation matrix.

Integrity Error -40062

- Error Message
 - For each day there is a Least Restrictive Environment (LRE) provided, a SPED need must be reported.
- Common Issues
 - Default end dates do not align with one another
 - Needs, LREs, Enrollment, etc.
 - Orphaned SPED data
- Possible Solution
 - Review SPED72 and/or Student Analysis tool
 - Review SPED99 report in AzEDS Portal

Special Education Data Updates

Out-of-Scope Topics



Out-of-Scope Topics

- Secondary Transition
 - [Secondary Transition Website](#)
 - [Secondary Transition Inbox](#)

Special Education Data Updates

Q&A



Special Education Data Updates

Survey



ADEConnect Support

(602) 542-7378

ESS Data Management Inbox

(602) 542-3962

Subscribe to stay informed:

Data Management Alerts

Data Management Vimeo Channel

Next SEDU Webinar: January 15, 2025

Thank You

