

(These items were developed by teachers for the Technical Skills Assessment. Below is a sample item for each program standard.)

### Question 1 of 9

Which parameter is addressed by Universal Design — Americans with Disabilities Act (ADA)?

- A) Height of ceilings
- B) Width of door openings
- C) Texture of walls
- D) Materials used in construction

### Question 2 of 9

If a gallon of paint covers 350 square feet, what is the amount of paint required for a room that measures 12 feet by 30 feet with an 8-foot ceiling?

- 5L 2 gallons
- 6L 3 gallons
- 7L 4 gallons
- 8L 5 gallons

### Question 3 of 9

What tool would an interior designer use at a job site to measure room dimension?

- A) Yard stick
- B) T-square
- C) Architect scale
- D) Metal tape measure

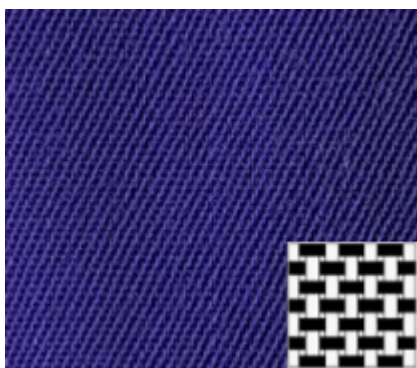
#### Question 4 of 9

What defines an ANALOGOUS color scheme?

- A) Three colors that are equally distant from each other on the color wheel
- B) A primary color from the color wheel with white or black
- C) Three to five colors that are next to each other on the color wheel
- D) Colors that are opposite each other on the color wheel

#### Question 5 of 9

What type of fabric weave is pictured?



- A) Knit
- B) Plain
- C) Basket
- D) Twill

#### Question 6 of 9

Which features belong to Victorian architecture?

- A) Gingerbread and turrets
- B) Flat roofs and glass
- C) Columns and porticos
- D) Horizontal lines and organic shapes

### Question 7 of 9

Which three workspaces make up the work triangle in a kitchen?

---

- A) Cabinets, stove, refrigerator
- B) Dishwasher, sink, refrigerator
- C) Dishwasher, cabinets, stove
- D) Refrigerator, sink, stove

### Question 8 of 9

What shows a straight-on view of a wall?

---

- A) Section
- B) Elevation
- C) Floor plan
- D) Plot plan

### Question 9 of 9

After selecting products, finishes, furnishings, lighting, and accessories, what is the next step?

---

- A) Create preliminary budget
- B) Take measurements
- C) Finalize budget
- D) Develop space arrangement

Interior Design Sample Test Answer Key

<b>Question</b>	<b>Answer</b>
1.	B
2.	A
3.	D
4.	C
5.	B
6.	A
7.	D
8.	B
9.	C