

(These items were developed by teachers for the Technical Skills Assessment. Below is a sample item for each program standard.)

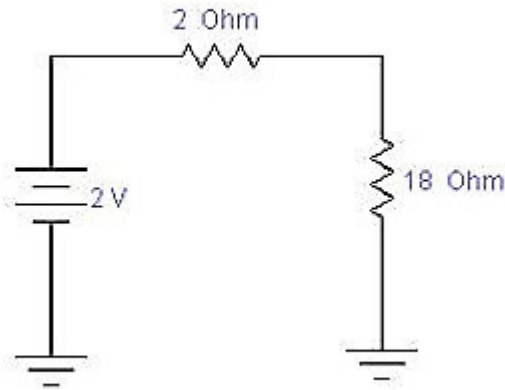
Question 1 of 15

How often should MOST portable fire extinguishers be inspected?

- ☐ **A)** Never
- ☐ **B)** Every year
- ☐ **C)** Every 2 months
- ☐ **D)** Every 2 years

Question 2 of 15

What is the power of this circuit?



- ☐ A) 0.5W
- ☐ B) 10W
- ☐ C) 0.1W
- ☐ D) 50W

Question 3 of 15

To test a circuit for amperage, how MUST the meter be connected?

- ☐ A) In reverse bias
- ☐ B) In series
- ☐ C) In forward bias
- ☐ D) In parallel

Question 4 of 15

What does Electronic Computer-Aided Design (ECAD) software offer the user?

- ☐ A) Limits general drawings for assembly.
- ☐ B) To design and analyze his/her project.
- ☐ C) Limits the application to one design.
- ☐ D) To view the project in a mono dimension.

Question 5 of 15

What is the unit of electron flow along a conductor?

- ☐ A) Volt
- ☐ B) Watt
- ☐ C) Amp
- ☐ D) Ohm

Question 6 of 15

What is the RMS value of a sine wave whose pk to pr value is 10 volts? ($V_{pp} = 2.828$)

- ☐ A) 5 volts
- ☐ B) 7.07 volts
- ☐ C) 3.18 volts
- ☐ D) 3.53 volts

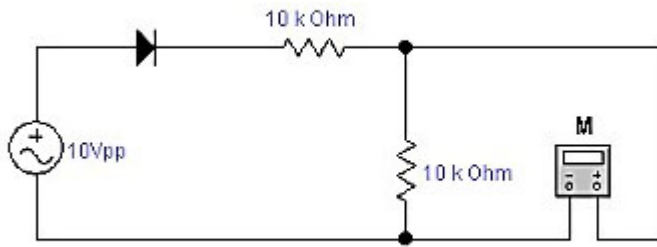
Question 7 of 15

What does a material classified as "ferromagnetic" MOST likely contain?

- ☐ A) Antimony
- ☐ B) Iron
- ☐ C) Aluminum
- ☐ D) Chromium

Question 8 of 15

What is the RMS voltage measurement taken from the meter M? ($V_{pp} = 2.828 \text{ RMS}$)



- ☐ A) 5.2V
- ☐ B) 3.2V
- ☐ C) 7.1V
- ☐ D) 6.4V

Question 9 of 15

Which statement is CORRECT concerning inductors?

- ☐ A) Oppose a change in voltage
- ☐ B) Oppose current
- ☐ C) Oppose a change in current
- ☐ D) Oppose voltage

Question 10 of 15

What does it mean when there is NO smoothing capacitor present and DC output contains ripples at the line frequency?

- ☐ A) Filtered
- ☐ B) Regulated
- ☐ C) Unfiltered
- ☐ D) Unregulated

Question 11 of 15

What is the twisting force of a motor called?

- ☐ A) Torque
- ☐ B) Horsepower
- ☐ C) Slip speed
- ☐ D) Counter EMF

Question 12 of 15

What is the SIMPLEST form of a power supply regulator?

- ☐ A) Bridge Rectifier
- ☐ B) Zener Diode
- ☐ C) By-pass Capacitor
- ☐ D) Schottky Diode

Question 13 of 15

What is the PRIMARY purpose of an oscillator circuit?

- ☐ A) To generate an amperage
- ☐ B) To generate a signal
- ☐ C) To generate a varying resistance
- ☐ D) To generate a voltage

Question 14 of 15

If an amplifier has a 3dB gain, how much is the power gain factor?

- ☐ A) 10
- ☐ B) 2
- ☐ C) 3
- ☐ D) 6

Question 15 of 15

What is the sequence needed for sending information over a serial bus?

- ☐ **A)** Serial load the data in, then shift it out in parallel.
- ☐ **B)** Parallel load the data in, then parallel shift the data out.
- ☐ **C)** Parallel load the data in, then serial shift the data out.
- ☐ **D)** Serial load the data in, then parallel load the data out.

Electronic Technologies Sample Test Answer Key

Question	Answer
1.	B
2.	C
3.	B
4.	B
5.	C
6.	D
7.	B
8.	B
9.	C
10.	C
11.	A
12.	B
13.	B
14.	B
15.	C