



ARIZONA DEPARTMENT OF  
**EDUCATION**

# Foster Care Education: BIDs & Transportation

---

Joey Taylor, Foster Care Education Coordinator  
Arizona Department of Education  
602.542.3569  
[fostercare@azed.gov](mailto:fostercare@azed.gov)

# Objectives

---

## Participants will...

- learn more about their role in the BID process
- understand all the possibilities in transporting students in foster care to their school of origin

# Common Acronyms

---

- SEA: State educational agency
- LEA: Local educational agency
- CWA: Child welfare agency
- ESSA: Every Student Succeeds Act
- FCEP: Foster Care Education Program
- BID: Best interest determination
- POC: Point of Contact
- FC: Foster Care



# Pre-Assessment

---

# Pre-Assessment

---

1. The school of origin is the school the child is enrolled at when entering foster care or if already in foster care, the school the child is enrolled at the time of a foster care placement change.
  - a. True
  - b. False

# Pre-Assessment

---

2. Which school should a student in foster care attend during the BID process?
  - a. New school
  - b. School that the biological parents choose
  - c. School of origin
  - d. School that the student in foster care chooses

# Pre-Assessment

---

3. The BID process should be executed when a student enters foster care or a student in foster care changes their foster care living arrangement.
  - a. True
  - b. False

# Pre-Assessment

---

4. Which party is responsible for transporting a student in foster care to their school of origin?
  - a. School of origin
  - b. New school
  - c. School of origin & new school splits responsibility
  - d. Child welfare agency
  - e. Foster caregiver
  - f. School of origin & child welfare agency share the responsibility



# Pre-Assessment

---

5. Transportation to the school of origin must be \_\_\_\_ & \_\_\_\_.
  - a. Prompt; Cost-effective
  - b. Easy; Convenient
  - c. Optional; Rare

# Foster Care Definition

## **Definition**

*24-hour substitute care for children placed away from their parents or guardians and for whom the child welfare agency has placement and care responsibility*

## Child welfare agencies

- DCS
- Tribal
- local

Children in foster care are not considered 'homeless' or McKinney-Vento eligible.



# Quick Summary

---

# Fostering Connections Act

The child welfare agency must have a plan for school stability

## CWA Assurances

- placement considers the appropriateness of the current educational setting and the proximity to the school in which the child is enrolled at the time of placement; and
- coordination to ensure that the child remains in the school in which the child is enrolled at the time of placement; or
- if remaining in such school is not in the best interests of the child, the CWA and LEA provide immediate and appropriate enrollment in a new school, with all the educational records of the child provided to the school

ESSA Foster  
Care School  
Stability  
Assurances

- School of Origin
- Best Interest  
Determination (BID)
- Transportation
- Immediate Enrollment

# ZOOM Poll

---

How comfortable are  
you with the BID  
process?



# School of Origin

---

## School of Origin

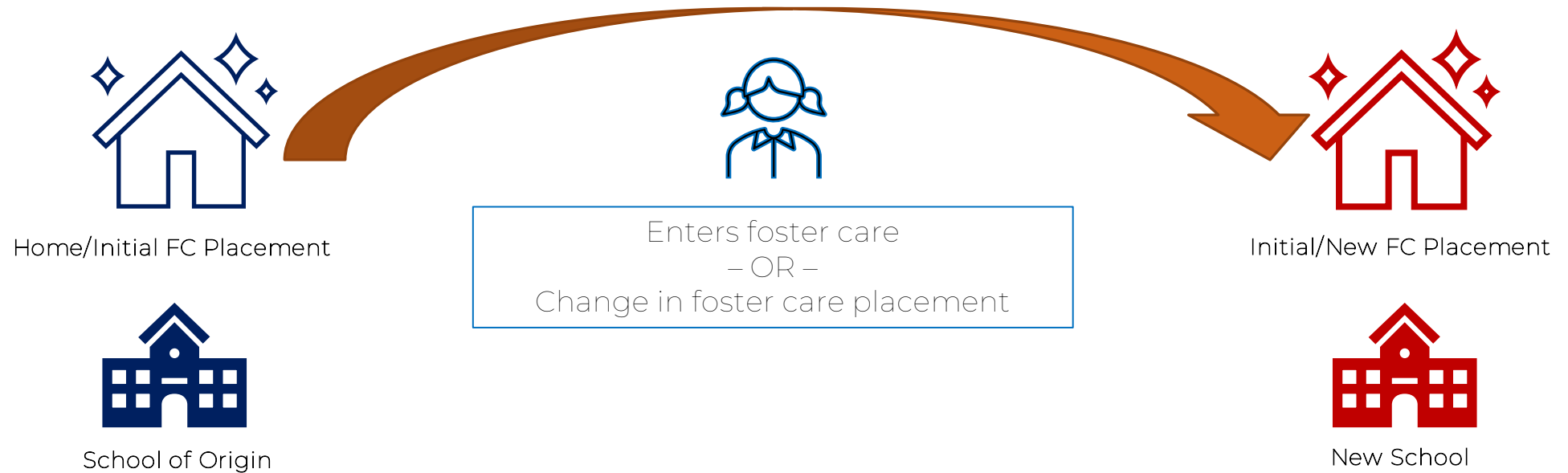
“...any such child enrolls or remains in such child’s school of origin, unless a determination is made that it is **not in such child’s best interest** to attend the school of origin, which decision shall be based on all factors relating to the child’s best interest, including consideration of the appropriateness of the current educational setting and the proximity to the school in which the child is enrolled at the time of placement...”

*20 U.S. Code 6311 (g)(1)(E)(i)*



# School of Origin

A child in foster care is to enroll or remain in the school of origin



## School of Origin

- The school in which a child is enrolled at the time of placement in foster care, including preschool
- OR –
- The school in which the child is enrolled at the time of change in foster care placement

# School of Origin

## When a withdrawal is sought from school of origin ...

- Caregivers may try to withdraw students in foster care without going through the BID process
- LEA registrar staff should not withdraw the student & notify the LEA Foster Care POC
- The LEA Foster Care POC should ensure that the student's school of origin rights are protected & that there is a BID conducted for the student
  - students in foster care should remain in their school of origin throughout the BID process



# Best Interest Determinations

---

BID

## Best Interest Determination

A holistic assessment to determine whether the **child in foster care** should **remain** in their **school of origin**, or if it is **not in the best interest** to remain in the school of origin, to ensure the student is **immediately enrolled** in the new school.

It is important to note that the cost of transportation should not be considered in the BID.

The student should remain at the school of origin during the BID process.

The BID is to specifically assess if it is in the **best interest** of the child in foster care to remain at their school of origin

Purpose of  
the BID

The BID should NOT be viewed as a choice between the school of origin & the new school

**CHILDREN SHOULD CONTINUE  
ATTENDING THE SCHOOL OF ORIGIN  
DURING THE BID PROCESS**

# Question for Zoom Chat

---

What should be considered in determining if remaining at the school of origin is in the best interest of a child in foster care?

## Considerations of the BID

- Projected duration of out-of-home placement.
- Child's academic, developmental, & socialization needs.
- How a school change will affect learning or credit attainment.
- Safety of the child.
- Wishes of parent, caregiver, & child.
- Toll of commute, distance, and time of travel to/from school.

\*Taken from the Department of Child Safety Open Discussion on ESSA Foster Care PowerPoint

When to  
conduct a  
BID?

The BID process should be executed every time a child either

- enters foster care
- changes their foster care living arrangement

The BID may be conducted via a virtual meeting, conference call, email correspondence, etc.



# BID Prep Form

## School of Origin BID Preparation Form

Date: [Click or tap to enter a date.](#)

### Local Educational Agency (LEA) Information

LEA Name: \_\_\_\_\_

School Site: \_\_\_\_\_

LEA Foster Care Point of Contact: \_\_\_\_\_ Email: \_\_\_\_\_

School Address: \_\_\_\_\_

### Child in Foster Care Information

Child Name: \_\_\_\_\_

Date of Birth: \_\_\_\_\_ State Student ID: \_\_\_\_\_

Date of FC Move: \_\_\_\_\_ Grade: \_\_\_\_\_

Residence School Address: \_\_\_\_\_

### School of Origin Input for BID

- **How well connected is the child to the school and/or school staff?**  
*(i.e., how long attending the school, positive relationships with school staff, any sense of belonging or fitting in, etc.)*

[Click or tap here to enter text.](#)

- **How is the child performing academically?**  
*(i.e., passing/failing classes, reading/writing/math at grade level, etc.)*

[Click or tap here to enter text.](#)

## BIDs

### Required Participants

- Child welfare agency
- School of origin

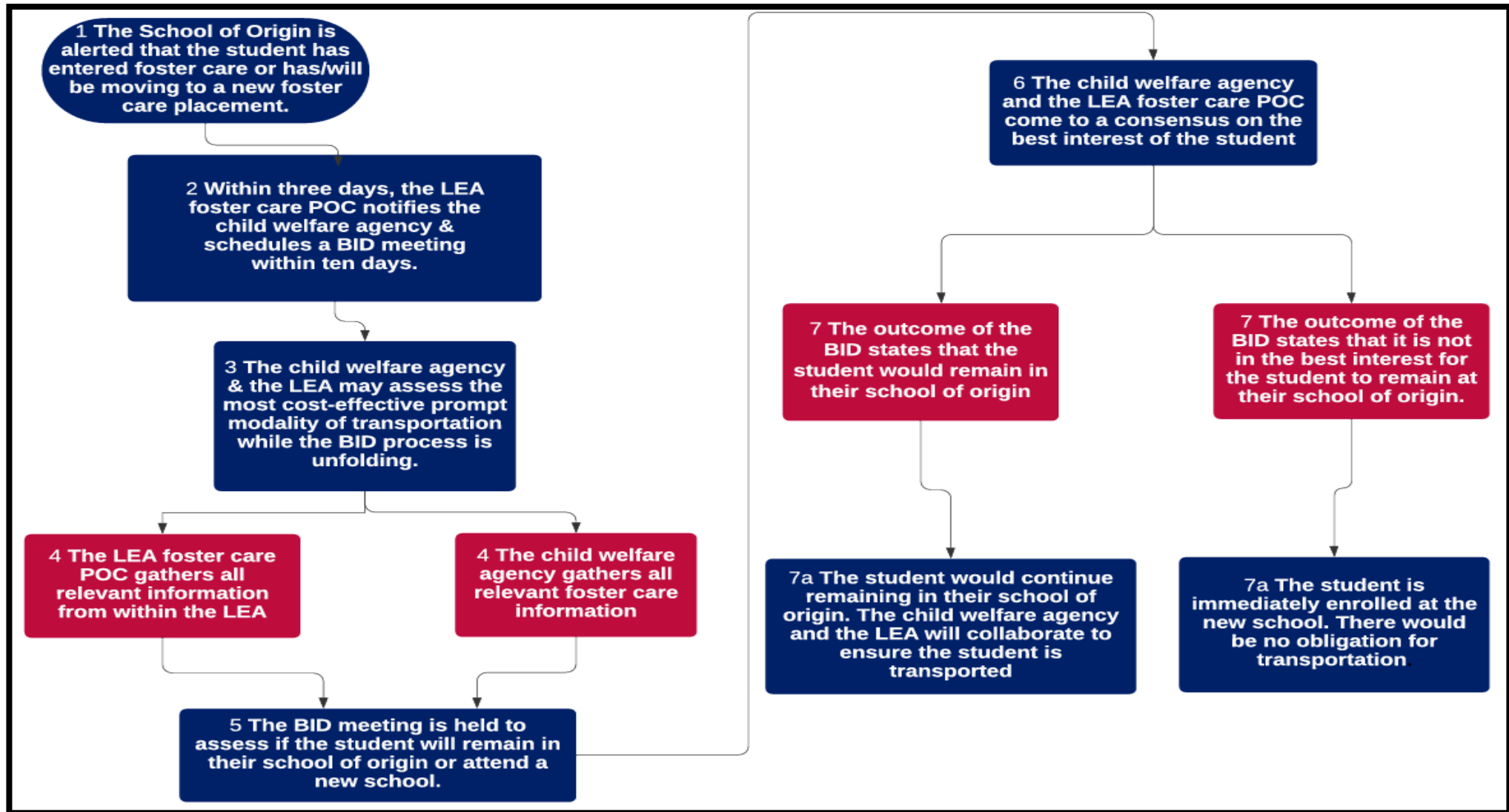
The child welfare agency should be considered the **final decision maker** if there is not consensus & should lead the BID process.

BIDs

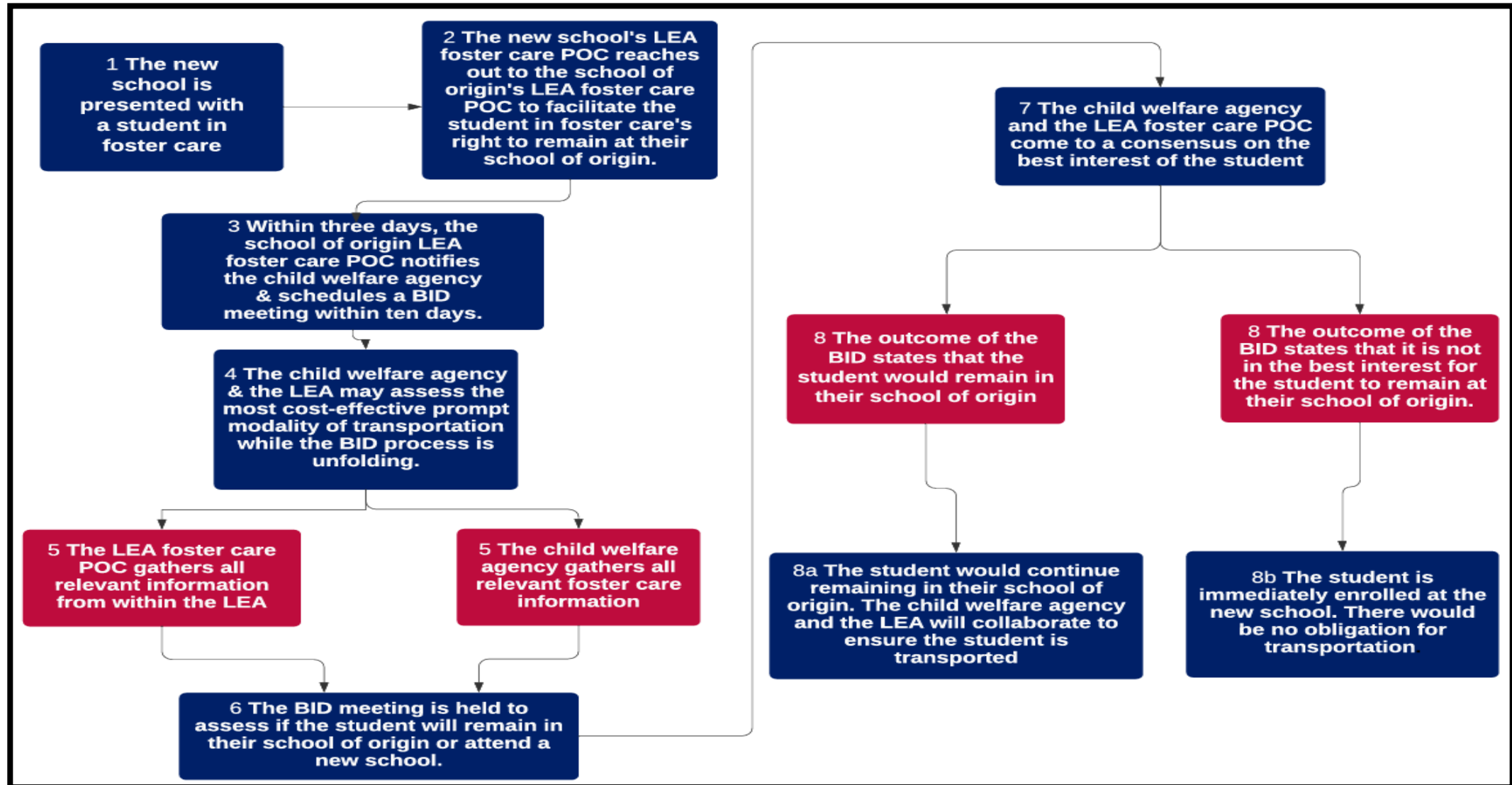
# Ameliorating Participants

- Potential new school
- Foster caregiver
- Child in foster care
- Bio or adoptive parents
- Surrogate parent
- CASA
- SEA foster care point of contact

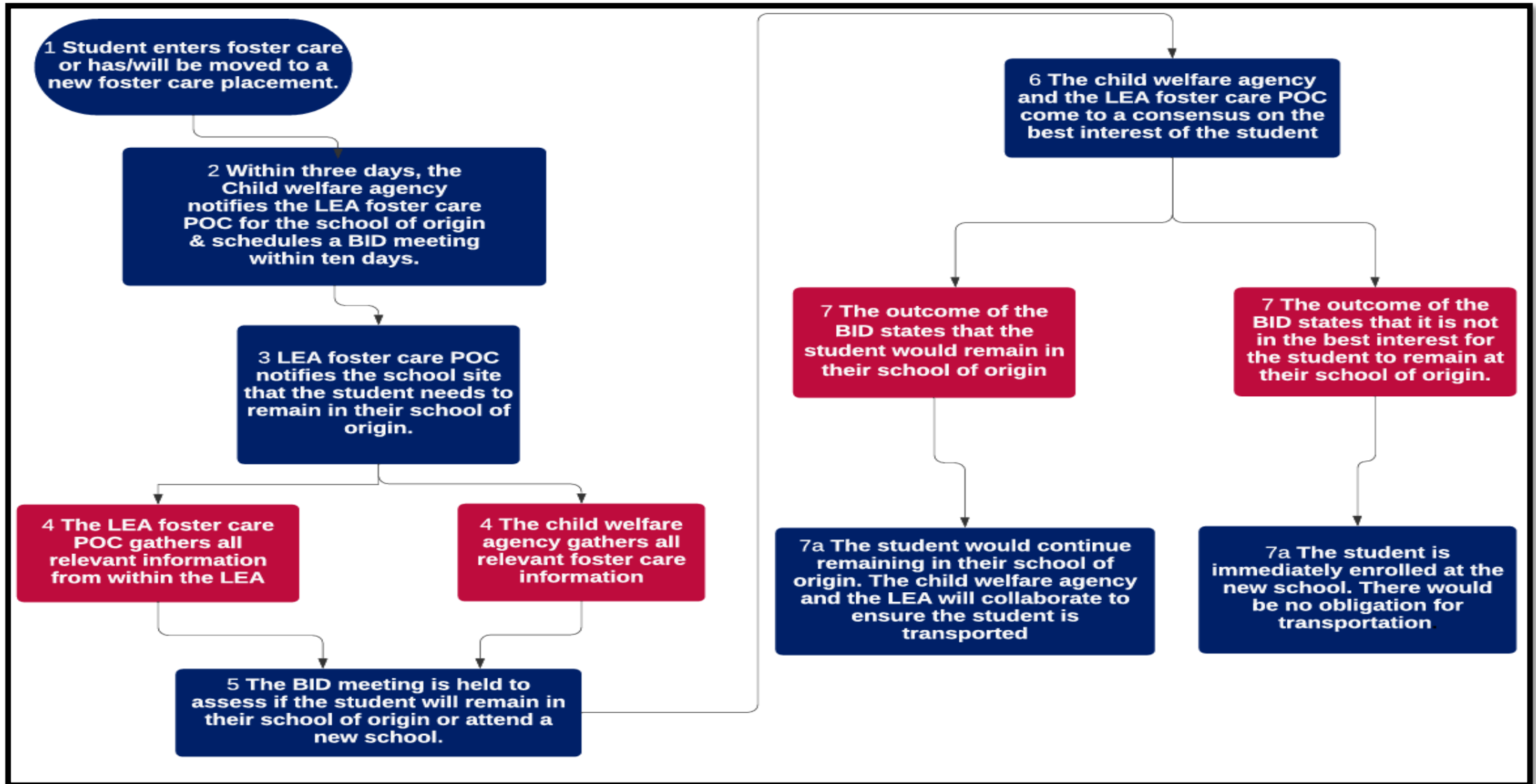
# BID School of Origin Flowchart



# BID New School Flowchart



# BID Child Welfare Agency Flowchart



# BID Challenges

- Communication issues w/ CWA
- SPED Private Placement
  - For more information, refer to the [Students in Foster Care Receiving Special Education](#) AZ-TAS Document
- RTC
- Hospitalization
- Juvenile Detention
- Open for LEA Feedback



# Transportation

---



# Transportation

“(B) by not later than 1 year after the date of enactment of the Every Student Succeeds Act, develop and implement clear written procedures governing how transportation to maintain children in foster care in their school of origin when in their best interest will be provided, arranged, and funded for the duration of the time in foster care, which procedures shall—

“(i) ensure that children in foster care needing transportation to the school of origin will promptly receive transportation in a cost-effective manner and in accordance with section 475(4)(A) of the Social Security Act (42 U.S.C. 675(4)(A));...”

20 U.S. Code 6312 (c)(5)(B)(i)

# Transportation

“(ii) ensure that, if there are additional costs incurred in providing transportation to maintain children in foster care in their schools of origin, the local educational agency will provide transportation to the school of origin if—

“(I) the local child welfare agency agrees to reimburse the local educational agency for the cost of such transportation;

“(II) the local educational agency agrees to pay for the cost of such transportation; or

“(III) the local educational agency and the local child welfare agency agree to share the cost of such transportation;”

20 U.S. Code 6312 (c)(5)(B)(ii)

# Transportation

- If transportation is required for a student in foster care to remain at their school of origin, the LEA and the child welfare agency will share the responsibility of that transportation
- The transportation must be prompt & cost-effective
  - The [Foster Care Transportation Procedure](#) will help illuminate the most prompt & cost-effective modality of transportation for a particular student in foster care
- The LEA Foster Care POC should be empowered to activate transportation to the school of origin, when it is necessary

## Transportation Existing Options

Transportation already provided by other programs or already being paid for-

- SPED
- Title IV-E
- MV
- Group home state contract

## Transportation Low to No Cost

- Transportation that can be provided at low or no-cost-
- Caregiver provides transportation to school
  - Existing bus routes
  - CWA may be able to provide mile reimbursement to the caregiver
  - Amending current bus routes
  - Public transportation, if appropriate

# Foster Care Transportation Procedure

## Foster Care Transportation Procedure Document

Once a child in foster care is identified, the Local Educational Agency's (LEA) Foster Care Point of Contact (POC) shall be notified. The LEA Foster Care POC will execute the procedure for ensuring children in foster care that need transportation to their school of origin will promptly receive transportation in a cost-effective manner and in accordance with section 475(4)(A) of the Social Security Act (42 U.S.C. 675(4)(A)) & how that transportation will be provided, arranged, and funded. Transportation to the school of origin for children in foster care is a shared responsibility between the child welfare agency & the school of origin. This collaboration requires great partnership, creative problem-solving skills, and a student-focused mindset so children in foster care would be affirmingly supported by all foster care education stakeholders.

**Local Educational Agency** [[Click here to enter text.](#)]

- School (Name and Contact Info): [[Click here to enter text.](#)]
- LEA Foster Care POC (Name and Contact Info): [[Click here to enter text.](#)]
- Transportation Office contact (Name and Contact Info): [[Click here to enter text.](#)]
- Student(s) (Name and DOB): [[Click here to enter text.](#)] Grade: [[Click here to enter text.](#)]
- Placement/Caregiver (Name and Contact Info): [[Click here to enter text.](#)]
- Child Welfare Agency (CWA) POC (Name and Contact Info): [[Click here to enter text.](#)]
- CWA Specialist (Name and Contact Info): [[Click here to enter text.](#)]
- CWA Specialist's Supervisor (Name and Contact Info): [[Click here to enter text.](#)]

**Foster Caregiver Address:** [[Click here to enter text.](#)]

**School Address:** [[Click here to enter text.](#)]

### Procedure

**Is the child in foster care placed in this LEA's district boundaries (if applicable)?**

**YES**  **NO**

- If yes, this LEA shall transport this child in the same manner as the rest of their students. If this LEA does not have boundaries or does not transport their students continue with this procedure.
- If no, continue with this procedure.

## Foster Parent Transportation Rules

### Foster Parent Agreement 2.7.

Accept, encourage and support the child's individual lifestyle, including the arrangement and facilitation for the child to receive an education based upon his or her ability and within the **school district of their origin** when appropriate...

### AAC R.21-6-316.

A foster parent shall provide or arrange appropriate local **transportation** to meet the routine **educational**, medical, recreational, social, religious, and therapeutic needs of a foster child.

LEA & CWA  
Transportation  
Collaboration

The transportation to school of origin ALWAYS remains a shared responsibility between the LEA of the school of origin & the CWA

The 'how' of coordinating transportation can be as flexible, creative, & unique, as it needs to be for each scenario



# Potential Transportation Norms

## Cost-Effective & Prompt Norms

### Student placed in foster group home

- foster group home

### Student, w/ transportation as a related service in their IEP, enters foster care

- school of origin (may use IDEA funds)

### Student placed with foster family; foster family is not able to transport

- LEA & CWA collaborate by each party providing one route of transportation



# Points of Contact

---

## Foster Care Points of Contact

“(5) collaborate with the State or local child welfare agency to—

“(A) designate a **point of contact** if the corresponding child welfare agency notifies the local educational agency, in writing, that the agency has designated an employee to serve as a point of contact for the local educational agency”

20 U.S.C. § 6312 (c)(5)(A)

# LEA & Child Welfare Agency Points of Contact

Points of  
Contact

- LEA Points of Contact
- DCS Points of Contact
- Tribal Foster Care Points of  
Contact



# Lasting Takeaway

---

# Foster Care School Stability Steps

Student enters foster care or has a change in foster care placement

Student remains at the school of origin while the LEA & child welfare agency execute the BID process

BID

BID Outcome: Stay in School of Origin

LEA & child welfare agency collaborate on transportation

BID Outcome: Do Not Stay in School of Origin

The new school immediately enrolls the student, even without all paperwork.



## Foster Care Education



# Post-Assessment

---

# Post-Assessment

---

1. The school of origin is the school the child is enrolled at when entering foster care or if already in foster care, the school the child is enrolled at the time of a foster care placement change.
  - a. True
  - b. False



# Post-Assessment

---

2. Which school should a student in foster care attend during the BID process?
  - a. New school
  - b. School that the biological parents choose
  - c. School of origin
  - d. School that the student in foster care chooses

# Post-Assessment

---

3. The BID process should be executed when a student enters foster care or a student in foster care changes their foster care living arrangement.
  - a. True
  - b. False

# Post-Assessment

---

4. Which party is responsible for transporting a student in foster care to their school of origin?
  - a. School of origin
  - b. New school
  - c. School of origin & new school splits responsibility
  - d. Child welfare agency
  - e. Foster caregiver
  - f. School of origin & child welfare agency share the responsibility

# Post-Assessment

---

5. Transportation to the school of origin must be \_\_\_\_ & \_\_\_\_.
  - a. Prompt; Cost-effective
  - b. Easy; Convenient
  - c. Optional; Rare

# Thank You!

---



Joey Taylor, Foster Care Education Coordinator

Arizona Department of Education

602.542.3569

[fostercare@azed.gov](mailto:fostercare@azed.gov)