

## WELCOME TO WEBINAR #6: KINDERGARTEN ENTRY ASSESSMENT (KEA)

---

This webinar will be recorded and posted on the ADE Assessments webpage.

Please enter your First and Last Name in the Chat for tracking purposes for the live event.

We will also be capturing the chat questions. If there are questions that were frequently asked or need further clarification, ADE will compile and create an FAQ which will then be posted on the Assessments webpage under Friday Focus Webinars.



ARIZONA DEPARTMENT OF  
**EDUCATION**  
**ASSESSMENTS**

# **FRIDAY FOCUS WEBINAR #6: KINDERGARTEN ENTRY ASSESSMENT (KEA)**

---

**AUDRA AHUMADA**

**DEPUTY ASSOCIATE SUPERINTENDENT OF ASSESSMENT**

**NOVEMBER 17, 2023**

# WELCOME AND OVERVIEW

---

- KEA Legislative Updates
- KEA Results and Data
- KEA Resources and Supports

# KINDERGARTEN ENTRY ASSESSMENT (KEA)

---

- <https://www.azed.gov/ece/kindergarten>
- LEA's must assess students with KEA (board approved or LEA selected) first 45 days of school or within 45 days from time of enrollment
- LEA should ensure that the kindergarten entry assessment selected by a LEA is accessible to all students including all students with disabilities
- The Board's approved KEA is accessible, observation-based and requires the teacher to provide a rating on the student's current skills
- Currently there are about 50,000 students entered into the Teaching Strategies GOLD Platform

# KEA GUIDANCE



## Assessments

### Kindergarten Entry Assessment (KEA): Next Steps

To: KEA District/Charter Test Coordinators (DTCs)

From: Audra Ahumada, Deputy Associate Supt. of Assessment  
Arizona Department of Education

Date: October 2, 2023

For most LEAs the 45-day KEA requirement to evaluate all kindergarten students is here. There are currently over 50,000 kindergarten students entered into the system.

The legislature enacted HB2060 (Chapter 170) <https://legiscan.com/AZ/text/HB2060/2023> which will take effect on October 30, 2023. This law allows (LEAs) to select their own Kindergarten Entry Assessment and have it approved by LEA's Governing Board. A.R.S. 15-701(3) requires universal screening of preschool program, kindergarten programs and grades 1 through 3 that is designed to identify pupils who have reading deficiencies.

The Teaching Strategies GOLD (TSG) platform will not close, those Local Education Agencies (LEAs) that elect to use the KEA from TSG may continue to do so. The Arizona Department of Education (ADE) will receive various data reports from TSG throughout the year.

ADE will only provide technical support/assistance and funding for the KEA with TSG which was approved by the State Board of Education.

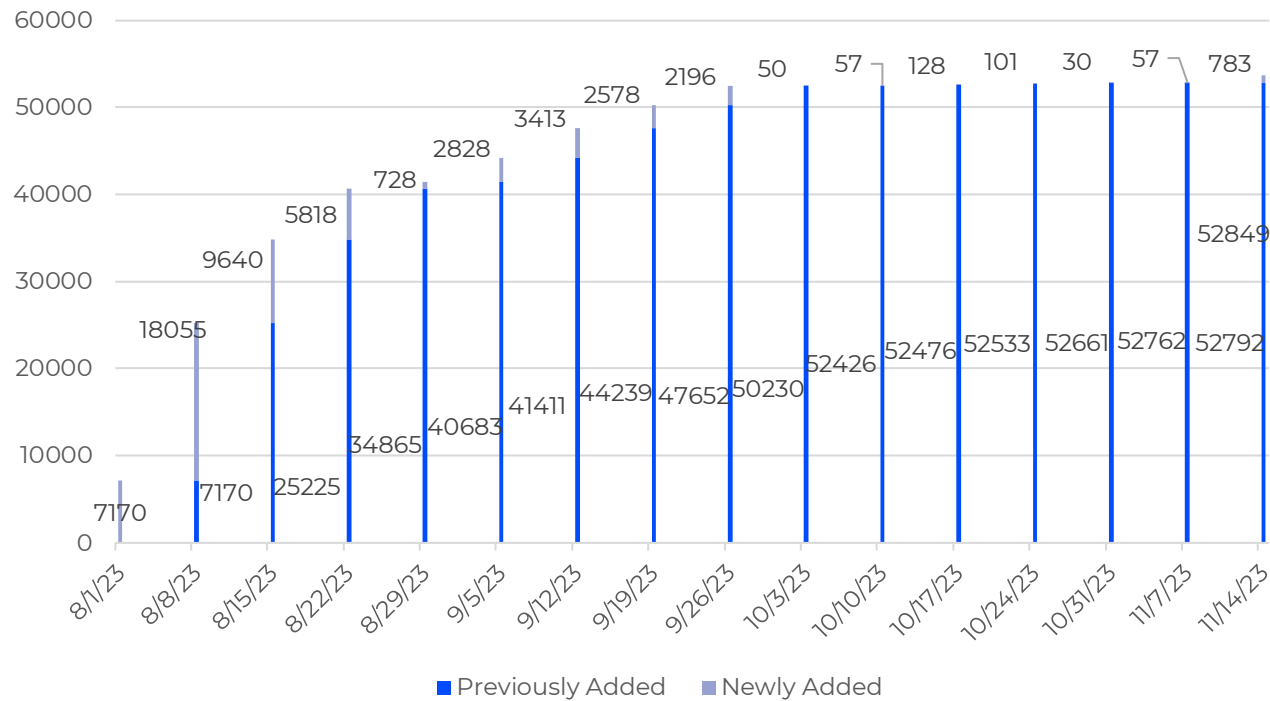
ADE has received many questions about data collection, the law does not identify what must be collected and who that data should be shared with outside of your LEA. At this time, there is no requirement to submit any data to ADE regarding the LEA-selected Kindergarten Entry Assessment. ADE will continue to receive data/information from TSG for those LEAs that have selected this assessment for their use.

# KEA RESULTS AND DATA

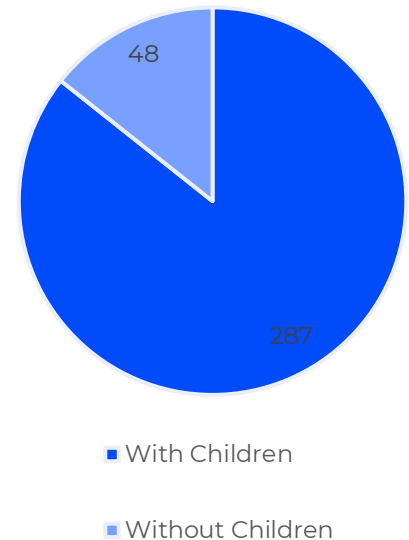
---

# CURRENT STATUS

2023 KEA Child Count - 53,632



KEA Programs



# KEA REPORTS

## MyTeachingStrategies™

Report for All Programs in Arizona Department of Education - KEA

### Progress by Area

Finalized									
Completed, Not Finalized									
Social-Emotional 63.3%	Physical 63.5%	Language 63.2%	Cognitive 63.4%	Literacy 63%	Mathematics 62.6%	English Language Acquisition 0%	Spanish Language 0%	Spanish Literacy 0%	
green once the areas are finalized.									

### Breakdown by Program

Area	Social-Emotional	Physical	Language	Cognitive	Literacy	Mathematics	English Language Acquisition	Spanish Language	Spanish Literacy
	0%	0%	0%	0%	0%	0%	N/A	N/A	N/A
	51.4%	51.4%	49%	51.2%	48.8%	48.4%	N/A	N/A	N/A
	70.4%	70.4%	70.4%	70.4%	70.4%	70.4%	N/A	N/A	N/A
	100%	100%	100%	100%	100%	100%	N/A	0%	0%
	85.7%	85.7%	85.7%	85.7%	85.7%	85.7%	N/A	0%	0%
	100%	100%	100%	100%	100%	100%	N/A	N/A	N/A
	0%	0%	0%	0%	0%	0%	N/A	N/A	N/A
	0%	0%	0%	0%	0%	0%	N/A	N/A	N/A
	100%	100%	100%	100%	100%	100%	N/A	N/A	N/A
	3.8%	3.8%	3.8%	3.8%	3.8%	3.8%	N/A	N/A	N/A
	54.6%	54.6%	54.6%	54.6%	54.6%	54.6%	N/A	0%	0%
	100%	100%	100%	100%	100%	100%	N/A	N/A	N/A
	46.7%	46.7%	46.7%	46.7%	46.7%	46.7%	N/A	N/A	N/A
	100%	100%	100%	100%	100%	100%	N/A	N/A	N/A



# KEA REPORTS

View Documentation

Digital Forms

**KEA**

Checkpoints

Checkpoint Dates

	SOCIAL-EMOTIONAL	PHYSICAL	LANGUAGE	COGNITIVE	LITERACY
Soc	✓	✓	✓	✓	✓
Soc	✓	✓	✓	✓	✓
Soc	✓	✓	✓	✓	✓
Soc	✓	✓	✓	✓	✓
Lan	✓	✓	✓	✓	✓
	✓	✓	✓	✓	✓
	✓	✓	✓	✓	✓
	✓	✓	✓	✓	✓
	✓	✓	✓	✓	✓
	✓	✓	✓	✓	✓
	✓	✓	✓	✓	✓

3b. Solves social problems

7a. Uses fingers and hands

K-entry expectation

Social-Emotional

Physical

KEA Survey Progress

CLASS SUMMARY

STUDENT REPORTS

Select a student to view an individualized KEA summary report. \*

# NEXT STEPS FOR TEACHERS

## Development and Learning

### Social-Emotional

Levels have not been entered for this child in this area.

### Physical

Levels have not been entered for this child in this area.

### Language

Levels have not been entered for this child in this area.

### Cognitive

Levels have not been entered for this child in this area.

### Literacy

Currently, Child

is beginning to match a written word with a spoken word, but it may not be the beginning of the next step.

### Next Child will:

- Match a written word with a spoken word, but it may not be the beginning of the next step.

The Development and Learning feature allows each child is currently able to select objectives and dimensions.

## Class Profile

### Social-Emotional

Objectives / Dimensions	Class Profile
1a. Manages feelings	Preschool 3 (Preschool 3)
1b. Follows limits and expectations	Preschool 3 (Preschool 3)
1c. Takes care of own needs appropriately	Preschool 3 (Preschool 3)
1d. Forms relationships with adults	Preschool 3 (Preschool 3)
1e. Responds to emotional cues	Preschool 3 (Preschool 3)
1f. Interacts with peers	Preschool 3 (Preschool 3)
1g. Respects limits and rights of self and others	Preschool 3 (Preschool 3)
1h. Solves social problems	Preschool 3 (Preschool 3)

The Class Profile compares information about children's skills, knowledge, and behaviors to widely held expectations for their age or class/grade during...

## Report Card

### Skills, Knowledge, and Behaviors

	Social-Emotional	CPS	CP2	CP3	CP4	Assessment Comments
1a. Manages feelings	9	10				Currently, Belle is beginning to be able to look at a situation differently or delay gratification. <b>Next, Belle will:</b> be able to look at a situation differently or delay gratification.
1b. Follows limits and expectations	9	10				Currently, Belle manages classroom rules, routines, and transitions with occasional reminders. <b>Next, Belle will:</b> begin to apply these rules in new but similar situations.
1c. Takes care of own needs appropriately	9	10				Currently, Belle is beginning to demonstrate confidence in meeting own needs. <b>Next, Belle will:</b> demonstrate confidence in meeting own needs.
1d. Forms relationships with adults	9	10				Currently, Belle manages separations without

The Report Card feature allows teachers to share the latest information regarding a child's skills, knowledge, and abilities with families, including a...

# RESOURCES

---

# RESOURCES - INFOGRAPHIC

## 2023-2024 Kindergarten Entry Assessment (KEA)

Evaluation/Observation Period  
2023-2024 School Year

### Requirements

- ✓ All kindergarten students shall be assessed within the first 45 calendar days of enrollment.
- ✓ Accounts are set up in Teaching Strategies Gold® (TSG) platform.
- ✓ Photos, videos of children, or documentation is not required.
- ✓ [Senate Bill 1572](#) provides additional information.
- ✓ [Assigned District/Charter Testing Coordinator](#) shall complete new PY form.
- ✓ Each District/Charter Testing Coordinator is required to attend live virtual training.

### Arizona's KEA Tool and Resources

- ✓ Training Registration: ADE Professional Learning and Development (APLD)
- ✓ TSG Training: 3 clock hours
- ✓ Asynchronous is now available for teachers within the TSG platform.
- ✓ [Teaching Strategies Support Portal](#) – for how-to-guides on account set-up
- ✓ [Arizona Student Import Instructions](#)
- ✓ [Student Import Template](#)
- ✓ [Data Dictionary](#) for program account set-up in TSG platform

### Objectives of Learning & Development (Dimensions/Items)

<b>Social Emotional Development</b> <ul style="list-style-type: none"> <li>• Manages feelings</li> <li>• Follows limits and expectations</li> <li>• Responds to emotional cues</li> <li>• Interacts with peers</li> <li>• Solves social problems</li> </ul>	<b>Physical</b> <ul style="list-style-type: none"> <li>• Uses fingers and hands</li> </ul>	<b>Language and Literacy</b> <ul style="list-style-type: none"> <li>• Tells about another time or place</li> <li>• Follows directions</li> <li>• Notices and discriminates rhyme</li> <li>• Notices and discriminates alliteration</li> <li>• Uses and appreciates books and other texts</li> <li>• Uses print concepts</li> </ul>
	<b>Cognitive / Approaches to Learning</b> <ul style="list-style-type: none"> <li>• Attends and engages</li> </ul>	
	<b>Mathematics</b> <ul style="list-style-type: none"> <li>• Counts</li> <li>• Quantifies</li> <li>• Connects numerals and quantities</li> </ul>	

Email: [KEAinbox@azed.gov](mailto:KEAinbox@azed.gov)



ARIZONA DEPARTMENT OF  
**EDUCATION**

Website: [www.azed.gov/kindergarten](http://www.azed.gov/kindergarten)

<https://www.azed.gov/sites/default/files/2023/07/KEA%20Infographic%2023-24%20Final%20v3.pdf>

# TSG RESOURCES

## ▼ My Teaching Strategies GOLD Resources (Updated 10/01/23)

In August of 2022, the Arizona State Board of Education unanimously approved Teaching Strategies Gold as Arizona's KEA tool. Teaching Strategies Gold (TSG) is a tool that does not interrupt instruction, as it allows teachers to capture evidence of student learning in the moment.

### Kindergarten Entry Assessment Resources

#### Resources for Teachers:

- [List of Required TSG Objectives](#)
- [How to Complete KEA Assessment](#) - Guide to completing KEA Assessment
- [Formative Assessment Process](#)
- [ADE Formative Assessment Resources](#)

#### Resources for District/Charter Test Coordinators:

- [KEA District/Charter Test Coordinator Form](#) - 2023-2024
- [ADE Student Transfer Form](#) - For transfers outside of district/charter within the state.
- [TSG Student Transfer Guide](#) - For transfers within the district/charter system.
- [Assessment Status Report](#) - Administrators will run this report to confirm that students have been assessed.
- [TSG Archiving Students Guide](#) - Guide to archiving inactive students from current or previous years.

### Getting Started Account Setup Guides

[Teaching Strategies Getting Started Video](#)

[My Teaching Strategies Support Portal](#) - All guides and support for the platform can be found here.

[Adding Administrator to My Teaching Strategies](#)

[Adding a Site to My Teaching Strategies](#)

[Adding a Classes in My Teaching Strategies - Administrator](#)

[Adding Teachers to My Teaching Strategies](#)

[Adding Children to My Teaching Strategies - Administrator](#)

[Student Import file & Guide](#)

[ADE - Data Dictionary](#) - provides answers for input during set-up in various sections.

<https://www.azed.gov/ece/kindergarten> Under My Teaching Strategies GOLD Resources Tab

# KEA WEBINARS

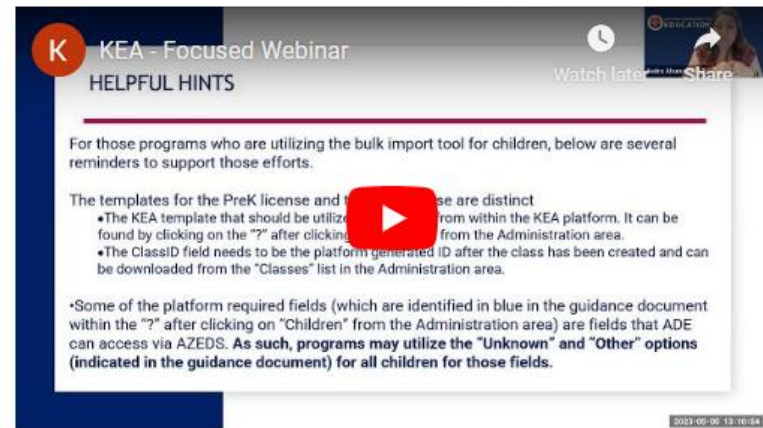
KEA Information Session

KEA for Administrators Session

<https://www.azed.gov/ece/kindergarten>  
Under the Recorded Webinars  
Tab

## ▼ Recorded Webinars (Updated 7/26/23)

May 5, 2023 - KEA Information Session - [PPT](#) - [FAQ](#) - Now available!



KEA for Administrators Webinar Recording



# KEA TRAININGS

KEA Trainings Live trainings are required for KEA District Test Coordinators (DTCs)

Teachers/Test Administrators will complete either the asynchronous trainings or live training

## ▼ KEA Trainings (Updated 10/02/23)

Teaching Strategies has now released the next set of cohorts for teaching trainings!

We know that it is not always easy to find time for training, so we have broken TSG's 3-hour introductory training into multiple virtual timeframes to try to best meet the needs of educators across the state. There is now an asynchronous training available for teachers through the "Develop" tab in the TSG platform.

**Asynchronous Trainings** - Video on how to access for educators & run completion reports for administrators - [Click here](#)

### Live Virtual Trainings

Please click the links below to register for free for the KEA TSG Introductory trainings:

COHORT	DATE	TIME	REGISTRATION LINK
147	October 12th	1:00pm - 4:00pm (3hrs)	<a href="#">Register</a>
148	November 3rd	8:00am - 11:00am (3hrs)	<a href="#">Register</a>
149	December 7th	1:00pm - 4:00om (3hrs)	<a href="#">Register</a>

<https://www.azed.gov/ece/kindergarten> Under the KEA Trainings Tab

QUESTIONS?

---





# THANK YOU!

**For questions, please contact us at:  
Testing@azed.gov**

