



# Navajo County

Providing comprehensive services to students 16 years of age and older who are not enrolled in K-12 schools and assisting them to acquire the academic and employment skills to be college & career ready

## THE CHALLENGE



Approximately 1 out of every 6 adults age 18 and up\* in Navajo County lacks a high school credential.

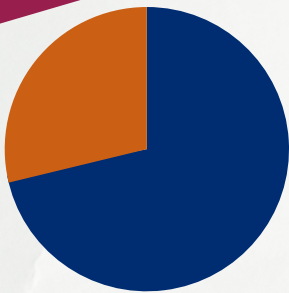
2,841 individuals 18 and older live in linguistically isolated households, meaning all members of the household, 14 years and over, have at least some difficulty with the English language.



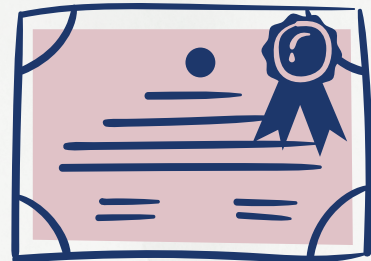
23.88% of individuals aged 16 - 19 that are NOT enrolled in school, DO NOT have high school diplomas or equivalent.



## THE RESULTS



Program Success  
Of the Adult Education students enrolled in Navajo County, about 29% improved at least two grade levels within the program year.



51 High School Equivalency Diplomas were issued!



### Integrated Education and Training (IET)

IET is an education model that combines occupational skills training with adult education services to increase the educational and career advancement of participants. The state of Arizona had 1,628 participants in IET programs during program year 2021-2022. 589 industry-recognized credentials were earned.

#### IET Programs Offered in Navajo County

- Construction Technology
- Business Entrepreneurship (Bridge Program)
- Nursing Assistant Training
- Business Office Technology

(See below for full list of programs offered throughout the state)



#### Post-Exit Participant Follow-up

53% of participants became or maintained employment within the 2nd quarter after exit

47% of participants became or maintained employment within the 4th quarter after exit

58% Attained a post-secondary credential while enrolled or within 1 year of exit





# Information & Resources

## Arizona Adult Education eligible individuals:

- Minimum 16 years of age
- Not enrolled or required to be enrolled in secondary school per A.R.S. 15-802
- Meet Arizona state eligibility requirements under A.R.S. 15.232 B; AND
  - are basic skills deficient; OR
  - do not have secondary diplomas or its recognized equivalent and have not achieved an equivalent level of education; OR
  - English language learners

## Adult Education Services

The Arizona Department of Education currently funds 20 adult education programs around the state to service all workforce areas and counties. Classes are offered in-person and online through different virtual formats.

### High School Equivalency Information:

<https://www.azed.gov/adultedservices/get-your-diploma>

### Current Program Map and Class Contact Information:

<https://www.azed.gov/adultedservices/Adult-Education-Programs>

## Expanded List of IET Programs Offered in Arizona

- Construction Technology
- Business Entrepreneurship
- Nursing Assistant Training
- Business Office Technology
- Customer Service and Sales
- Allied Health-Home Health Care/CAN
- HVAC
- Light Duty Diesel Mechanic
- Computer Maintenance
- CompTIA Network+
- CompTIA IT Fundamentals+
- Business Office - Basic Certificate
- Phlebotomy Technician Certificate
- Building & Construction Technologies
- Google Workspace
- Certified Apartment Maintenance Technician
- Microsoft Office Specialist
- Commercial Driver License
- Certified Caregiver
- Certified Nursing Assistant
- Certified Automotive Technician
- Retail Foundations
- ServSafe Management
- Retail Customer Service
- Business of Retail
- 3D Modeling and Animation Certificate
- Assisted Living Facility Caregiver Certificate
- Medical Assistant
- Logistics & Supply Chain Management
- Automated Industrial Technologies
- Small Business and Entrepreneurship + Microsoft Office Specialist Certificate

For more information on IET resources and current offerings, contact: [AES-POC@azed.gov](mailto:AES-POC@azed.gov)

## Data Sources

US Census Bureau form B01003 -TOTAL POPULATION 2021: ACS 5-Year Estimates Detailed Tables  
<https://data.census.gov/table?q=B01003&tid=ACSDT5Y2021.B01003>

US Census Bureau B15001 -SEX BY AGE BY EDUCATIONAL ATTAINMENT FOR THE POPULATION 18 AND OVER - 2021: ACS 5-Year Estimates Detailed Tables  
<https://data.census.gov/table?q=B15001&tid=ACSDT5Y2021.B15001>

US Census Bureau form B14005 -SEX BY SCHOOL ENROLLMENT BY EDUCATIONAL ATTAINMENT BY EMPLOYMENT STATUS FOR THE POPULATION 16 TO 19 YEARS - 2021: ACS 5-Year Estimates Detailed Tables  
<https://data.census.gov/table?q=B14005&tid=ACSDT5Y2021.B14005>

For additional Adult Education data requests, please complete the Data Request form found here: <https://www.azed.gov/data/data-request-form>



Adult Education Services  
Arizona Department of Education  
1535 West Jefferson St., Bin 26  
Phoenix, AZ 85007  
[AdultEd@azed.gov](mailto:AdultEd@azed.gov)  
(602) 258-2410

