



ARIZONA DEPARTMENT OF  
**EDUCATION**

# Early Childhood Quality Improvement Practices (ECQUIP)

Informational Webinar September 2023



Arizona Department of Education  
Early Childhood Education

# ECQUIP

*Early Childhood Quality Improvement Practices*



Standards and Rubric for Program Assessment

<https://www.azed.gov/ece/publications-manuals>

- **Today we will:**
- Review the 5 ECQUIP standards
- Look at the Why, Who, and How of the ECQUIP process
- Discuss strategies and tips for developing and writing your program's ECQUIP plan



ARIZONA DEPARTMENT OF  
**EDUCATION**

# The Five ECQUIP Standards

# The Five ECQUIP Standards

- 1. Standard 1: School and District Leadership** – helping leaders to support improved student achievement
- 2. Standard 2: Curriculum, Instruction, and Professional Development** – promoting rigorous curriculum, effective instruction, and instructional support
- 3. Standard 3: Classroom and School Assessments** – using data to improve classrooms, supportive programs, and school practices, as well as child outcomes
- 4. Standard 4: School Culture, Climate and Communication** - developing schools as learning communities for students, teachers, and families
- 5. Standard 5: Fiscal Review** – monitoring funding activities



ARIZONA DEPARTMENT OF  
**EDUCATION**

# The Why, Who, and How of ECQUIP

# WHY use ECQUIP?

- To develop and sustain quality practices in early childhood programs
- To create ECE ecosystems:
  - Bring ECE providers together/ partner with other ECE programs/ service agencies within your community to benefit young children and their families
  - To strengthen families by increasing their understanding of the programs, supports and services available to them



# WHO can you partner with?

Based on the specific needs of your children, families, program, and community, who does it make sense to invite to be part of your ECQUIP team?

Examples:

- Quality First coach/ Smart Support coach
- Kindergarten teacher at your school
- Speech Pathologist / professionals delivering SPED services
- Your local Head Start program
- Local childcare center(s) director/ staff
- Parent(s) in your program
- Local agencies providing support to families in your community (e.g., domestic violence shelter, housing/ homelessness organizations, food bank, mental health services, etc.)





# HOW do we do ECQUIP?

1. Self-Assessment: complete the ECQUIP rubric
2. Determine who you would like to be part of your ECQUIP team
3. Write your ECQUIP plan



# The ECQUIP Plan

(Use this planning guide to design programmatic changes and budgetary decision-making to improve quality in EC Programs)  
**Upload Enhancement Plan to EMAC System**

Responsible Party:

Phone:

E-mail:

**FY23 Year ECQUIP Achievements:**

Target Area:	<input type="text"/>
Quality Goal:	
Strategies Implemented:	
Results achieved:	

**FY24 ECQUIP QUALITY ENHANCEMENT PLAN**

ECQUIP Meeting Dates	<input type="text"/>	<input type="text"/>	<input type="text"/>	<input type="text"/>
----------------------	----------------------	----------------------	----------------------	----------------------

ECQUIP Team Members: (Consider expanding your team to include Head Start, Community Childcare, local childcare partners, families, a business partner, First Things First staff, Title I preschool, local Read On partners, kindergarten teachers.)

Target Area (describe the area of program development to be targeted as identified during self-assessment, e.g. preschool environments; vocabulary development; staff evaluation practices, etc.)

Quality SMART Goal *(describe desired outcome of enhancement plan, e.g. improve staff evaluation practices to assure timely and meaningful feedback for the purpose of improving quality of instruction.)*  
 Specific    Measurable    Achievable    Relevant    Time-Bound *(Ensure all aspects of a SMART goal are present)*

Large empty light blue rectangular area for writing the Quality SMART Goal.

Selected Tool:

Implementation Strategies	Persons Responsible for Implementation	Target Date of Completion	Actual Date of Completion

# Choosing a Standard for Your ECQUIP Plan

- Which standard(s) do I choose to focus on?
- Do I have to have a goal for each of the 5 Standards?
- If we did an ECQUIP plan last year, can we focus on the same standard/ indicator again this year?



# TARGET AREA

- This item should align *directly* to one of the 5 Standards and corresponding Indicators within the ECQUIP manual
- Describe the area of program development to be targeted (as identified during self-assessment); e.g., preschool environments; vocabulary development; family engagement practices
- Choose a Standard/ Indicator that will support your vision for your program, based on your program’s current strengths, needs, and challenges
- **EXAMPLE:** Target Area chosen is Standard 2: “*Curriculum, instruction and professional development align with the Infant Toddler Developmental Guidelines, or the Arizona Early Learning Standards (Preschool)*”



# Quality SMART Goal

**SMART:** **S**pecific   **M**easurable   **A**chievable   **R**elevant   **T**ime-Bound

## Consider...

What is your **desired outcome**? What do you want to see accomplished by the end of the school year?

Describe the desired outcome, e.g., *“In Az Early Learning Standards: Concept 3 Vocabulary: The child understands and Uses Increasingly Complex Vocabulary*

***Our Goal: Children will extend their vocabulary use and knowledge.”***

What will successful attainment of your goal look like in practice within your program?  
How will you measure progress?

# Implementation Strategies

Strategies should be concrete and stated with measurable outcomes.

For a goal related to aligning curriculum with the AzELS and developing children's language, what might you use to measure progress?

## Examples of specific strategies:

“We will use TSG data on Language to drive lesson planning and goals for students' individual language development needs”

“QF Coach will work with us to create language modeling strategies that directly relate to our program and the needs they find while observing in the classroom”



# Implementation Strategies

Examples of strategies that are *not* specific enough:

- “We will develop our ECQUIP plan”
- “We will implement our new curriculum”

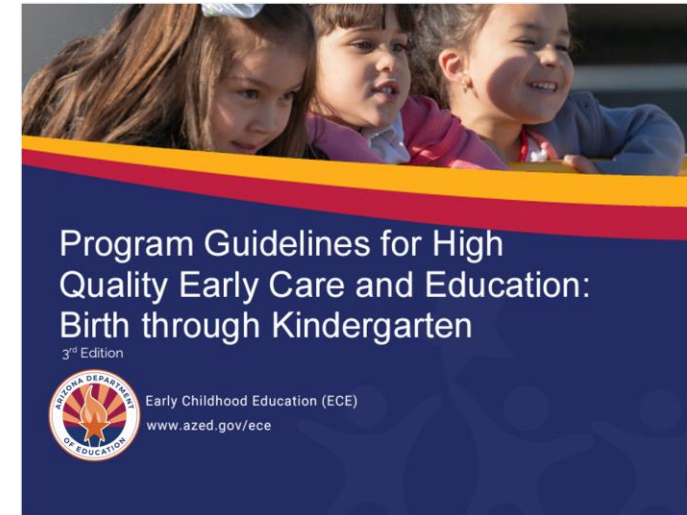
**Why don't these strategies work?**

# Resources

- ✓ Program Guidelines for High Quality Early Care & Education
- ✓ Arizona Early Learning Standards
- ✓ Infant-Toddler Developmental Guidelines

## Assessment tools:

- Accreditation Materials
- School Improvement plan
- Teacher Rating Scales/ ECRS
- Administrative Tools
- Teaching Strategies GOLD



ASSOCIATION FOR  
**Early  
Learning  
Leaders**

**National  
Accreditation  
Commission**  
FOR EARLY CARE AND  
EDUCATION PROGRAMS

**QUESTIONS?**





ARIZONA DEPARTMENT OF  
**EDUCATION**

**Thank You!**

**ECE Team**

**602-364-1530**

**[ECEInbox@azed.gov](mailto:ECEInbox@azed.gov)**