



February 21, 2023

To: Dr. Daniel P. Corr
President, Arizona State Board of Education

FROM: Christine Accurso
Executive Director, ESA

RE: Empowerment Scholarship Account Program Quarter 2 Report

Dear President Corr,

The Department of Education (Department) is pleased to submit to the State Board of Education (Board) the Empowerment Scholarship Account (ESA) Program Fiscal Year 2023 Quarter 2 Report pursuant to Title 7, Chapter 2 Article 15 of the Arizona Administrative Code. Quarter 2 covers the period between October 1, 2022, through December 31st, 2022.

We look forward to our discussion at the next Board meeting.

Sincerely,

Christine Accurso

Christine Accurso
Executive Director
Empowerment Scholarship Account Program



Empowerment Scholarship Account (ESA)

Quarterly Report to the Arizona State Board of Education

Fiscal Year 2023

Quarter 2

February 2023

Table of Contents

1	Introduction	1
2	Students in the Program.....	2
2.1	Students by Eligibility Category	2
2.2	Students by Grade Level	2
2.3	Students by Associated School District or Charter School	3
3	Annual Award Amount.....	4
3.1	Recipients by Award Range	4
4	ESA Applications	5
4.1	Applications by Status	5
4.2	Denied Applications.....	6
5	ESA Applications Processing Time	7
5.1	Applications by Processing Time	7
5.2	Incomplete Applications	7
6	ESA Feedback.....	7
6.1	Parent Feedback	Error! Bookmark not defined.
6.2	ADE Response to Feedback.....	8
7	Private Financial Management Firm	9
7.1	ClassWallet Accounts.....	9
7.2	Providers and Vendors	9
7.3	Communications & Trainings.....	9
7.4	Parent Concerns and Responses	9
7.5	Other Requests	9
8	Performance Metrics.....	10
8.1	Call Center Data	10
8.2	Help Desk Service Tickets	10
8.3	ClassWallet Orders	10
8.5	ClassWallet Prepaid Debit Card Transactions	10
	Appendix A: 2.3 Students by Associated School District or Charter School	11

1 Introduction

In accordance with Article 15 Empowerment Scholarship Accounts Rule 7-2-1503 Department Responsibilities, the Arizona Department of Education and the Empowerment Scholarship Account Program present this quarterly report to the Arizona State Board of Education. This report reflects data and information from quarter 2 of fiscal year 2023 and covers the time from October 1, 2022 through December 31, 2022. As stipulated in Rule 7-2-1503 item 5, this report includes the following:

- a) The number of students in the program disaggregated by eligibility, grade level and the school district or charter school associated with each student.
- b) The annual award amount associated with each student.
- c) The number of ESA applications received, approved, and denied in the preceding quarter, including the justification for the denied applications.
- d) The number of applications processed within 30 days of receipt and the number of administratively incomplete applications.
- e) A summary of any parent input or feedback collected pursuant to R7-2-1503(6) and how the Department is responding to concerns submitted as part of the process.
- f) Information on the private financial management firm contracted to assist with financial management of the program, including:
 - i. The number and eligibility type of accounts utilizing the firm,
 - ii. The number of providers and vendors on the firm's platform,
 - iii. Communications and training provided to parents,
 - iv. Concerns from parents submitted to the Department, the Treasurer, and the private financial management firm and how the Department, Treasurer and private financial management firm are addressing the concerns, and
 - v. Any other information the Board requests

2 Students in the Program

This section includes the number of students in the program disaggregated by eligibility, grade level, and the school district or charter school associated with each student.

As of December 30, 2022, there were 44,787 active students in the ESA program. By comparison, there were 30,471 students in the program during quarter 1.

2.1 Students by Eligibility Category

Eligibility Category	Active Students	Active Students
	Q1 FY 2023	Q2 FY 2023
Adoption / Foster Care- Adopted	581	592
Adoption / Foster Care –Planned Adoption	72	70
Attending D/F School	476	477
Legally Blind/Deaf/Hard of Hearing	62	64
Military	1285	1320
Military with Special Needs	41	46
Previously in ESA Program	185	187
Residing on a Native American reservation	444	444
Sibling	2328	2,356
Special Needs	8028	8,253
Universal	16,713	30,434
Universal with Special Needs	256	544
Total Active ESA Students	30,471	44,787

2.2 Students by Grade Level

Grade Level	Active Students	Active Students
	Q1 FY 2023	Q2 FY 2023
Preschool	411	509
Kindergarten	2,439	4,046
1 st	2,722	4,010
2 nd	2,745	3,945
3 rd	2,741	3,981
4 th	2,696	3,889
5 th	2,710	3,918
6 th	2,700	3,883
7 th	2,451	3,513

8 th	2,285	3,304
9 th	1,933	2,899
10 th	1,719	2,579
11 th	1,418	2,149
12 th	1,501	2,162
Total	30,471	44,787

¹ Due to legislative changes as of September 24, 2022, students are not required to attend public school for program eligibility.

2.3 Students by Associated School District or Charter School

As of December 31, 2022, ESA students previously attended 404 of the 662 total number of school districts and charter districts (referred to as local education agencies or LEAs) in Arizona. The complete list of students by associated LEA is found in Appendix A.

3 Annual Award Amount

This section includes a summary of the annual award amounts associated with students. The average annual award amount for active accounts as of December 30, 2022, was \$ 10,004.21.

3.1 Recipients by Award Range

Award Range	Count of Recipients
	Q2 FY 2023
<\$3,000	0
\$3,000-\$3,999	0
\$4,000-\$4,999	3,628
\$5,000-\$5,999	512
\$6,000-\$6,999	14,594
\$7,000-\$7,999	17,706
\$8,000-\$8,999	2,545
\$9,000-\$9,999	298
\$10,000-\$14,999	193
\$15,000-\$19,999	229
\$20,000-\$24,999	40
\$25,000-\$29,999	257
\$30,000+	4,785

4 ESA Applications

This section includes the number of applications that were received in the previous quarter broken down by those approved and those denied. Information on denied applications includes count by denial justification.

There were 20,714 applications received during Quarter 2 (October 1, 2022, through December 31, 2022), of which 8 were deemed administratively incomplete. All applications received during this time have been processed.

4.1 Applications by Status

	FY 23 Q1		FY 23 Q2	
Status of Application	COUNT	%	Count	%
Approved	869	73%	15,112	89.5%
Denied	222	19%	395	2.3%
Duplicate	21	2%	43	0.25%
New Contract Sent			1,333	7.95%
Total	1,189		16,883	

4.2 Denied Applications

Denied Applications by Reason

Reason

Reason	Number
Incoming Kinder-Not Assigned to D/F school	7
Not attending a D or F school	1
Not eligible for ESA due to age (Kindergarten) and student does not have a disability	536
Not eligible for Preschool Special Needs	4
PreK with no SPED	2
Student has graduated 12th grade.	1
Grand Total	551

Denied Applications by Type

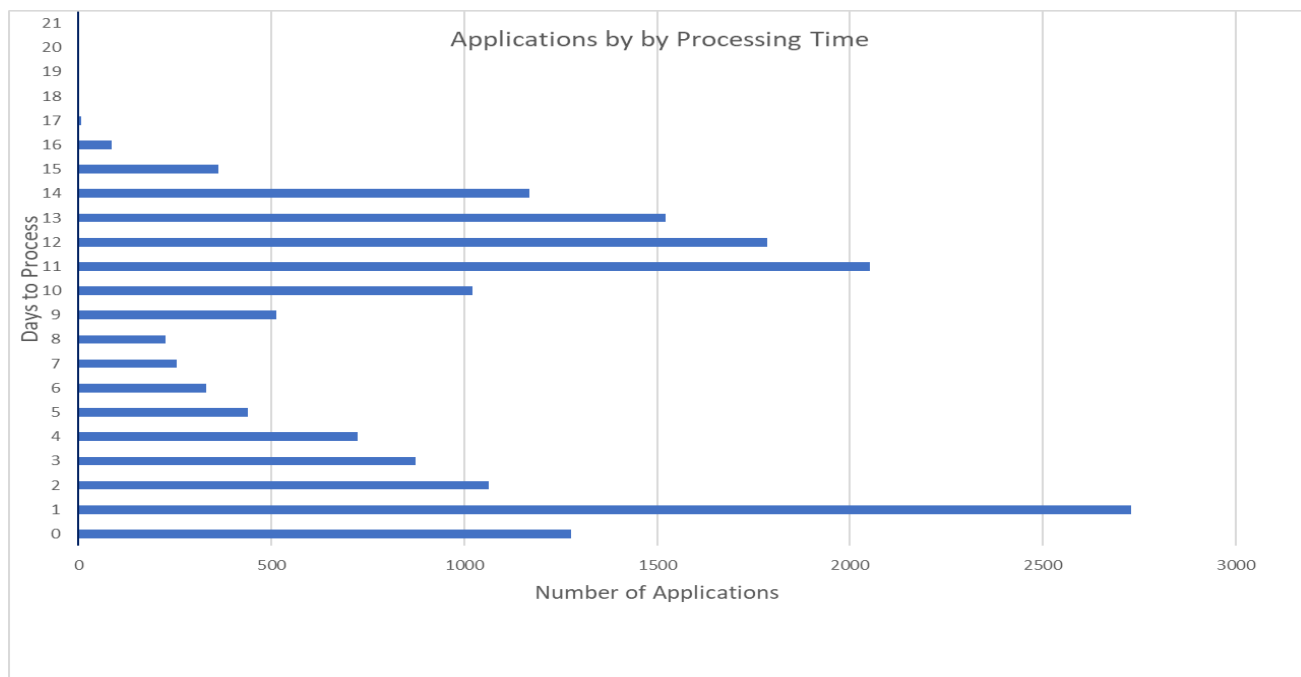
Application Type for Denials	Count of Application Type
Adoption / Foster Care –Adopted	2
Military	6
Residing on a Native American reservation	1
Sibling	6
Special Needs	1
Universal	534
Universal with Special Needs	1
Grand Total	551

5 ESA Applications Processing Time

This section includes the number of applications received in the previous quarter that were processed within 30¹ days of receipt and the number of applications that were administratively incomplete.

5.1 Applications by Processing Time

	Count	Percentage
Applications processed in <= 30 days*	16,883	100.00%
Applications processed in > 30 days*	0	0.00%



- Average number of days to process applications: **7.31 days**

5.2 Applications Incomplete

Status of Application	Count of Applications
Incomplete	8

¹ Due to legislative changes as of September 29, 2021, the application processing time was reduced from 45 days to 30 days.

6.1 Parent Feedback

Due to the change in administration this information was not available for this quarterly report.

6.2 ADE Response to Feedback

Communications and Training

The Department continues to review and update its communications strategy for sharing information with prospective and existing Account Holders.

ESA Weekly Newsletter

All families receive a weekly email that includes helpful program tips.

7 Private Financial Management Firm

This section includes information on the private financial management firm, ClassWallet, assisting in the management of the program and includes:

- The number of accounts utilizing the firm
- The number of providers and vendors on the firm’s platform
- Communications and training provided to parents
- Concerns from parents submitted to the Department, the treasurer, and the private financial management firm and how the Department, Treasurer and private financial management firm are addressing the concerns
- Any other information the Board requests

7.1 Class Wallet Accounts

Class Wallet: Count of Students	
Active	46,187
Deactivated	6,259

7.2 Providers and Vendors

As of December 31, 2022, there were 3,241 vendors/providers in the Class Wallet application.

7.3 Communications & Trainings

The private financial management firm, ClassWallet, facilitates training for parents who use the platform to spend ESA monies. Training videos are available on the ESA website at <https://www.azed.gov/esa/classwallet>. In addition, the Department has posted a short informational video on the ESA website that is specific to the Arizona ESA program at <https://www.azed.gov/esa>.

7.4 Parent Concerns and Responses

The Department received many complaints regarding the time that it is taking to approve expense orders through ClassWallet.

7.5 Other Requests

There were no additional requests identified by the Board for this report.

8 Performance Metrics

This section includes information on the performance metrics on the critical functions of the ESA program from October 1, 2022, through December 31, 2022.

8.1 Call Center Data

- Total number of calls (in/outbound) 8482
- Average call wait time 3:02:18 hours
- Average handling time for inbound calls 5:19 minutes
- 46.94% of calls abandoned

8.2 Help Desk Service Tickets

- Total number of tickets that required response 14,610
(Oct - 5,167 – November - 4,707 December 4,736)

8.3 ClassWallet Orders

ESA staff reviewed **64,760** ClassWallet orders for reimbursement (receipts with credentials), Marketplace (purchases with over 2,033 vendors/providers), and 243 Direct Pay (private schools and approved vendors).

October Orders				
	Total	Marketplace	Direct Pay	Reimbursement
Submitted:	41,240	10,754	14,856	15,630
Approved:	19,407	6,020	7,786	5,601
Rejected:	1,735	564	363	808
November Orders				
	Total	Marketplace	Direct Pay	Reimbursement
Submitted:	42,861	7,226	14,557	21,078
Approved:	18,557	4,251	6,237	8,069
Rejected:	1,967	452	416	1,967
December Orders				
	Total	Marketplace	Direct Pay	Reimbursement
Submitted:	35,289	3,832	10,427	21,030
Approved:	20,736	4,100	7,633	9,003
Rejected:	2,038	399	601	1,038

8.5 ClassWallet Prepaid Debit Card Transactions

The ESA office is concerned that there are 17,613 amount of pre-paid debit card transactions that cannot be reviewed because parents have not uploaded receipts.

	October	November	December	Totals
Number of Orders with receipts	12,859	34,549	53,226	100,634
Number of Orders without receipts	1,592	5,019	11,002	17,613
Number of Prepaid approved/final accepted orders	13,941	38,142	62,135	114,218
Number of Prepaid rejected/incomplete orders	0	0	0	0
Number of Prepaid disallowed orders	0	0	21	21

Appendix A: 2.3 Students by Associated School District or Charter School

District/Charter ID	District/Charter Name	District/Charter Student Count
90199	Academy Del Sol, Inc.	4
90878	Academy of Mathematics and Science South, Inc.	3
79961	Academy of Mathematics and Science, Inc.	1
92768	Academy of Mathematics and Science, Inc.	3
78897	Academy of Tucson, Inc.	2
79437	Acorn Montessori Charter School	1
4289	Agua Fria Union High School District	243
4249	Aguila Elementary District	1
4409	Ajo Unified District	11
4280	Alhambra Elementary District	108
4418	Altar Valley Elementary District	23
79215	American Basic Schools LLC	1
79873	American Charter Schools Foundation d.b.a. Estrella High School	1
4348	American Leadership Academy, Inc.	54
79461	American Virtual Academy	21
4406	Amphitheater Unified District	949
4506	Antelope Union High School District	8
90532	Anthem Preparatory Academy	4
4178	Apache Elementary District	1
4443	Apache Junction Unified District	241
92312	Archway Classical Academy Arete	13
90917	Archway Classical Academy Chandler	12
92314	Archway Classical Academy Cicero	2
91878	Archway Classical Academy Glendale	2
92656	Archway Classical Academy Lincoln	5
91758	Archway Classical Academy North Phoenix	5
90857	Archway Classical Academy Scottsdale	6
90915	Archway Classical Academy Trivium West	2
90916	Archway Classical Academy Veritas	6
89486	Arete Preparatory Academy	1
91958	Arizona Autism Charter Schools, Inc.	56
79947	Arizona Community Development Corporation	4
87407	Arizona Connections Academy Charter School, Inc.	122
90758	Arizona Education Solutions	1
92566	Arizona Language Preparatory	1
4345	Arizona School For The Arts	2
4274	Arlington Elementary District	5
4187	Ash Creek Elementary District	13

4471	Ash Fork Joint Unified District	11
91305	ASU Preparatory Academy	1
91307	ASU Preparatory Academy	3
522074	ASU Preparatory Academy Digital	11
4272	Avondale Elementary District	263
89869	AZ Compass Schools, Inc.	1
4412	Baboquivari Unified School District #40	6
4468	Bagdad Unified District	6
79204	Ball Charter Schools (Dobson)	7
4294	Ball Charter Schools (Hearn)	2
90885	Ball Charter Schools (Val Vista)	1
4268	Balsz Elementary District	57
6361	BASIS Charter Schools, Inc.	4
81078	BASIS Charter Schools, Inc.	3
90841	BASIS Charter Schools, Inc.	2
90842	BASIS Charter Schools, Inc.	2
90862	BASIS Charter Schools, Inc.	2
91280	BASIS Charter Schools, Inc.	7
91309	BASIS Charter Schools, Inc.	1
91339	BASIS Charter Schools, Inc.	1
91949	BASIS Charter Schools, Inc.	1
92320	BASIS Charter Schools, Inc.	2
92736	BASIS Charter Schools, Inc.	6
92865	BASIS Charter Schools, Inc.	1
92997	BASIS Charter Schools, Inc.	3
273398	BASIS Charter Schools, Inc.	2
549803	BASIS Charter Schools, Inc.	3
783027	BASIS Charter Schools, Inc.	4
934316	BASIS Charter Schools, Inc.	8
4481	Beaver Creek Elementary District	28
10972	Benchmark School, Inc.	3
4355	Benjamin Franklin Charter School - Queen Creek	12
79226	Benson Unified School District	47
4515	Bicentennial Union High School District	5
4169	Bisbee Unified District	21
4397	Blue Ridge Unified School District No. 32	84
81041	Blueprint Education	4
4224	Bonita Elementary District	1
4269	Buckeye Elementary District	209
4284	Buckeye Union High School District	85
4378	Bullhead City School District	13
90327	CAFA, Inc. dba Learning Foundation and Performing Arts Gilbert	9

78888	Cambridge Academy East, Inc	3
79905	Camelback Education, Inc	1
4470	Camp Verde Unified District	94
89758	Candeo Schools, Inc.	11
4484	Canon Elementary District	3
4400	Career Development, Inc.	1
80001	Carpe Diem Collegiate High School	1
4282	Cartwright Elementary District	106
4446	Casa Grande Elementary District	344
4453	Casa Grande Union High School District	74
4410	Catalina Foothills Unified District	294
85749	Caurus Academy, Inc	3
4244	Cave Creek Unified District	720
4191	Center for Academic Success, Inc.	2
79385	Central Arizona Valley Institute of Technology	1
6362	Challenge School, Inc.	1
79886	Challenger Basic School, Inc.	4
88299	Chandler Preparatory Academy	6
4242	Chandler Unified District #80	2034
4158	Chinle Unified District	8
4474	Chino Valley Unified District	174
90138	Choice Academies, Inc.	3
92316	Cicero Preparatory Academy	4
85448	CITY Center for Collaborative Learning	3
4486	Clarkdale-Jerome Elementary District	45
81027	Cochise Community Development Corporation	10
4177	Cochise Elementary District	4
79381	Coconino Association for Vocation Industry and Technology	2
4370	Colorado City Unified District	175
4381	Colorado River Union High School District	8
90533	Compass Points International, Inc	1
4160	Concho Elementary District	26
4479	Congress Elementary District	9
4416	Continental Elementary District	57
4442	Coolidge Unified District	217
4487	Cottonwood-Oak Creek Elementary District	113
4501	Crane Elementary District	260
4263	Creighton Elementary District	322
79049	Daisy Education Corporation dba Sonoran Science Academy	4
89915	Daisy Education Corporation dba Sonoran Science Academy East	3
79496	Deer Valley Charter Schools, Inc.	2
4246	Deer Valley Unified District	2435

81099	Desert Heights Charter Schools	4
88321	Desert Star Community School, Inc.	3
6258	Destiny School, Inc.	2
4179	Double Adobe Elementary District	4
4174	Douglas Unified District	33
4228	Duncan Unified District	3
4243	Dysart Unified District	1133
79059	E-Institute Charter Schools, Inc.	1
89850	EAGLE South Mountain Charter, Inc.	1
87401	East Mesa Charter Elementary School, Inc.	3
4516	East Valley Institute of Technology	2
90506	Ed Ahead	1
6365	Edkey Inc. dba American Heritage Academy	2
79981	Edkey, Inc. - Arizona Conservatory for Arts and Academics	2
81045	Edkey, Inc. - Pathfinder Academy	2
81043	Edkey, Inc. - Redwood Academy	2
4329	Edkey, Inc. - Sequoia Choice Schools	331
92226	Edkey, Inc. - Sequoia Pathway Academy	5
81050	Edkey, Inc. - Sequoia School for the Deaf and Hard of Hearing	2
79211	Edkey, Inc. - Sequoia Village School	5
89412	Eduprize Schools, LLC	61
4185	Elfrida Elementary District	3
4448	Eloy Elementary District	17
91277	Empower College Prep	1
78783	Fit Kids, Inc. dba Champion Schools	4
4202	Flagstaff Arts And Leadership Academy	1
4192	Flagstaff Unified District	567
4437	Florence Unified School District	693
4405	Flowing Wells Unified District	106
4167	Fort Huachuca Accommodation District	59
4221	Fort Thomas Unified District	64
4247	Fountain Hills Unified District	110
4273	Fowler Elementary District	71
4495	Franklin Phonetic Primary School, Inc.	2
4195	Fredonia-Moccasin Unified District	3
89506	Freedom Academy, Inc.	3
4303	Friendly House, Inc.	1
4505	Gadsden Elementary District	7
4157	Ganado Unified School District	18
6372	Gem Charter School, Inc.	3
90884	George Gervin Youth Center, Inc.	1
4238	Gila Bend Unified District	3

4239	Gilbert Unified District	1651
4271	Glendale Elementary District	239
89829	Glendale Preparatory Academy	1
4285	Glendale Union High School District	271
4208	Globe Unified District	45
4194	Grand Canyon Unified District	7
10974	Great Expectations Academy	3
4371	Hackberry School District	1
90906	Happy Valley East	3
79081	Happy Valley School, Inc.	4
4392	Heber-Overgaard Unified District	20
92519	Heritage Academy Gateway, Inc.	1
4336	Heritage Academy, Inc.	3
81076	Heritage Elementary School	1
4426	Hermosa Montessori Charter School	1
79061	Highland Free School	1
4248	Higley Unified School District	1003
4482	Hillside Elementary District	2
4389	Holbrook Unified District	14
79264	Horizon Community Learning Center, Inc.	7
92620	Horizon Community Learning Center, Inc.	10
4469	Humboldt Unified District	421
89784	Imagine Avondale Elementary, Inc.	3
90162	Imagine Avondale Middle, Inc.	1
90034	Imagine Prep Coolidge, Inc.	1
91326	Incito Schools	3
4259	Isaac Elementary District	37
4445	J O Combs Unified School District	312
79063	James Madison Preparatory School	1
4388	Joseph City Unified District	14
79064	Juniper Tree Academy	9
91328	Kaizen Education Foundation dba Discover U Elementary School	4
90333	Kaizen Education Foundation dba Gilbert Arts Academy	1
90334	Kaizen Education Foundation dba Liberty Arts Academy	1
90548	Kaizen Education Foundation dba Mission Heights Preparatory High School	1
79880	Kaizen Education Foundation dba Skyview High School	1
1000164	Kaleidoscope School	1
4396	Kayenta Unified School District #27	12
10878	Keystone Montessori Charter School, Inc.	6
79420	Khalsa Family Services	1
4360	Khalsa Montessori Elementary Schools	2

4383	Kingman Academy Of Learning	3
79598	Kingman Unified School District	270
4480	Kirkland Elementary District	2
4267	Kyrene Elementary District	924
90900	La Tierra Community School, Inc	2
4368	Lake Havasu Unified District	98
4276	Laveen Elementary District	239
79967	LEAD Charter Schools	14
90637	Leading Edge Academy Maricopa	3
91174	Leading Edge Academy Queen Creek	6
91135	Legacy Traditional School - Avondale	1
91133	Legacy Traditional School - Chandler	1
1001398	Legacy Traditional School - Deer Valley	2
834265	Legacy Traditional School - East Mesa	9
92047	Legacy Traditional School - Gilbert	8
850100	Legacy Traditional School - Glendale	6
850101	Legacy Traditional School - North Chandler	9
850099	Legacy Traditional School - Peoria	3
873957	Legacy Traditional School - Phoenix	3
92610	Legacy Traditional School - Queen Creek	8
92879	Legacy Traditional School - Surprise	24
91763	Legacy Traditional School – Laveen Village	4
92730	Leman Academy of Excellence, Inc.	32
4266	Liberty Elementary District	241
92657	Lincoln Preparatory Academy	2
4281	Litchfield Elementary District	897
79050	Little Lamb Community School	1
4374	Littlefield Unified District	15
4278	Littleton Elementary District	159
4270	Madison Elementary District	640
91935	Madison Highland Prep	2
4199	Maine Consolidated School District	8
4439	Mammoth-San Manuel Unified District	17
4404	Marana Unified District	871
4441	Maricopa Unified School District	392
4435	Mary C O'Brien Accommodation District	4
90861	Maryvale Preparatory Academy	3
79499	Masada Charter School, Inc.	3
89852	Math and Science Success Academy, Inc.	3
4473	Mayer Unified School District	40
4163	Mcnary Elementary District	11
4181	McNeal Elementary District	1

4235	Mesa Unified District	2339
4463	Mexicayotl Academy, Inc.	1
4211	Miami Unified District	10
79207	Milestones Charter School	1
4493	Mingus Springs Charter School	1
4488	Mingus Union High School District	28
4379	Mohave Valley Elementary District	19
4503	Mohawk Valley Elementary District	16
80011	Montessori Academy, Inc.	4
4363	Montessori Education Centre Charter School	8
4230	Morenci Unified District	1
90192	Morrison Education Group, Inc.	2
4251	Morristown Elementary District	8
90090	Mountain Institute JTED	1
78873	Mountain Oak Charter School, Inc.	8
4203	Mountain School, Inc.	1
4265	Murphy Elementary District	10
4176	Naco Elementary District	2
4252	Nadaburg Unified School District	111
4366	New Horizon School for the Performing Arts	2
4316	New School For The Arts	1
78882	New World Educational Center	1
10760	Noah Webster Schools - Mesa	2
4457	Nogales Unified District	64
4204	Northland Preparatory Academy	1
79881	Nosotros, Inc	1
4444	Oracle Elementary District	35
4262	Osborn Elementary District	134
6235	P.L.C. Charter Schools	1
4196	Page Unified School District #8	42
10967	Painted Pony Ranch Charter School	1
4275	Palo Verde Elementary District	11
4255	Paloma School District	1
4180	Palominas Elementary School District 49	96
4241	Paradise Valley Unified District	2070
5180	Paragon Management, Inc.	14
4510	Parker Unified School District	45
4460	Patagonia Elementary District	6
79069	Patagonia Montessori Elementary School	1
4462	Patagonia Union High School District	7
79024	Pathfinder Charter School Foundation	1
4209	Payson Unified District	116

4186	Pearce Elementary District	7
4283	Pendergast Elementary District	218
4237	Peoria Unified School District	1607
4340	Phoenix Education Management, LLC,	4
4256	Phoenix Elementary District	137
4286	Phoenix Union High School District	738
4452	Picacho Elementary District	3
4220	Pima Unified District	16
4201	Pine Forest Education Association, Inc.	2
4214	Pine Strawberry Elementary District	11
4390	Pinon Unified District	1
79455	Pointe Schools	4
4188	Pomerene Elementary District	3
4431	Portable Practical Educational Preparation, Inc. (PPEP, Inc.)	1
87405	Portable Practical Educational Preparation, Inc. (PPEP, Inc.)	174
4466	Prescott Unified District	457
4425	Presidio School	1
4511	Quartzsite Elementary District	16
4245	Queen Creek Unified District	790
4438	Ray Unified District	12
4159	Red Mesa Unified District	8
4447	Red Rock Elementary District	31
91317	Reid Traditional Schools' Painted Rock Academy Inc.	2
4301	Ridgeline Academy, Inc.	7
4257	Riverside Elementary District	9
4279	Roosevelt Elementary District	597
92704	Roosevelt Preparatory Academy	5
87399	Rosefield Charter Elementary School, Inc.	2
4155	Round Valley Unified District	41
4449	Sacaton Elementary District	6
4254	Saddle Mountain Unified School District	130
4218	Safford Unified District	42
4411	Sahuarita Unified District	364
4514	Salome Consolidated Elementary District	3
4210	San Carlos Unified District	163
4172	San Simon Unified District	12
89798	San Tan Montessori School, Inc.	24
4156	Sanders Unified District	15
4459	Santa Cruz Elementary District	8
79066	Santa Cruz Valley Opportunities in Education, Inc.	2
4458	Santa Cruz Valley Unified District	52
4454	Santa Cruz Valley Union High School District	6

85454	Satori, Inc.	4
91110	Scottsdale Country Day School	1
89756	Scottsdale Preparatory Academy	6
4240	Scottsdale Unified District	2825
4492	Sedona Charter School, Inc.	2
4467	Sedona-Oak Creek JUSD #9	59
92381	Self Development Academy-Phoenix	1
79072	Self Development Charter School	3
4472	Seligman Unified District	3
4393	Show Low Unified District	143
4175	Sierra Vista Unified District	457
4478	Skull Valley Elementary District	6
4496	Skyview School, Inc.	2
4391	Snowflake Unified District	176
4222	Solomon Elementary District	10
4500	Somerton Elementary District	26
4461	Sonoita Elementary District	11
79085	Southgate Academy, Inc.	1
4173	St David Unified District	18
4153	St Johns Unified District	42
4451	Stanfield Elementary District	20
10966	Stepping Stones Academy	4
79453	Success School	3
4407	Sunnyside Unified District	328
4440	Superior Unified School District	9
4408	Tanque Verde Unified District	127
79218	Telesis Center for Learning, Inc.	1
4361	Tempe Preparatory Academy	1
4258	Tempe School District	379
4287	Tempe Union High School District	356
4219	Thatcher Unified District	28
4305	The Boys & Girls Clubs of the Valley	1
6355	The Charter Foundation, Inc.	1
92978	The Grande Innovation Academy	5
90287	The Odyssey Preparatory Academy, Inc.	16
91250	The Paideia Academies, Inc	8
4264	Tolleson Elementary District	41
4288	Tolleson Union High School District	129
4450	Toltec School District	40
4168	Tombstone Unified District	35
4215	Tonto Basin Elementary District	5
4376	Topock Elementary District	2

90859	Trivium Preparatory Academy	4
4197	Tuba City Unified School District #15	3
79073	Tucson Country Day School, Inc.	2
79979	Tucson International Academy, Inc.	7
4403	Tucson Unified District	2465
4277	Union Elementary District	44
4413	Vail Unified District	503
4380	Valentine Elementary District	3
79957	Valley of the Sun Waldorf Education Association, dba Desert Marigold School	15
80992	Veritas Preparatory Academy	6
4162	Vernon Elementary District	15
92985	Victory Collegiate Academy Corporation	2
4339	Villa Montessori Charter School	6
91948	Vista College Preparatory, Inc.	1
4260	Washington Elementary School District	827
4504	Wellton Elementary District	24
79497	West Gilbert Charter Elementary School, Inc.	2
80923	West-MEC - Western Maricopa Education Center	1
91937	Western School of Science and Technology, Inc.	1
4394	Whiteriver Unified District	113
4236	Wickenburg Unified District	120
4170	Willcox Unified District	30
4193	Williams Unified District	42
4261	Wilson Elementary District	3
4154	Window Rock Unified District	162
4387	Winslow Unified District	44
4485	Yarnell Elementary District	5
4213	Young Elementary District	32
4377	Yucca Elementary District	6
4499	Yuma Elementary District	860
4507	Yuma Union High School District	239

