



Tribal Technology Roundtable

Expanding Digital Equity to Home

August 24, 2022

Disclaimer

This presentation may not be modified or redistributed in whole or in part without the permission from the Arizona Department of Education – Office of Digital Teaching and Learning. This presentation is provided for informational purposes only. Nothing in this presentation constitutes official policy or guidance from the Arizona Department of Education.



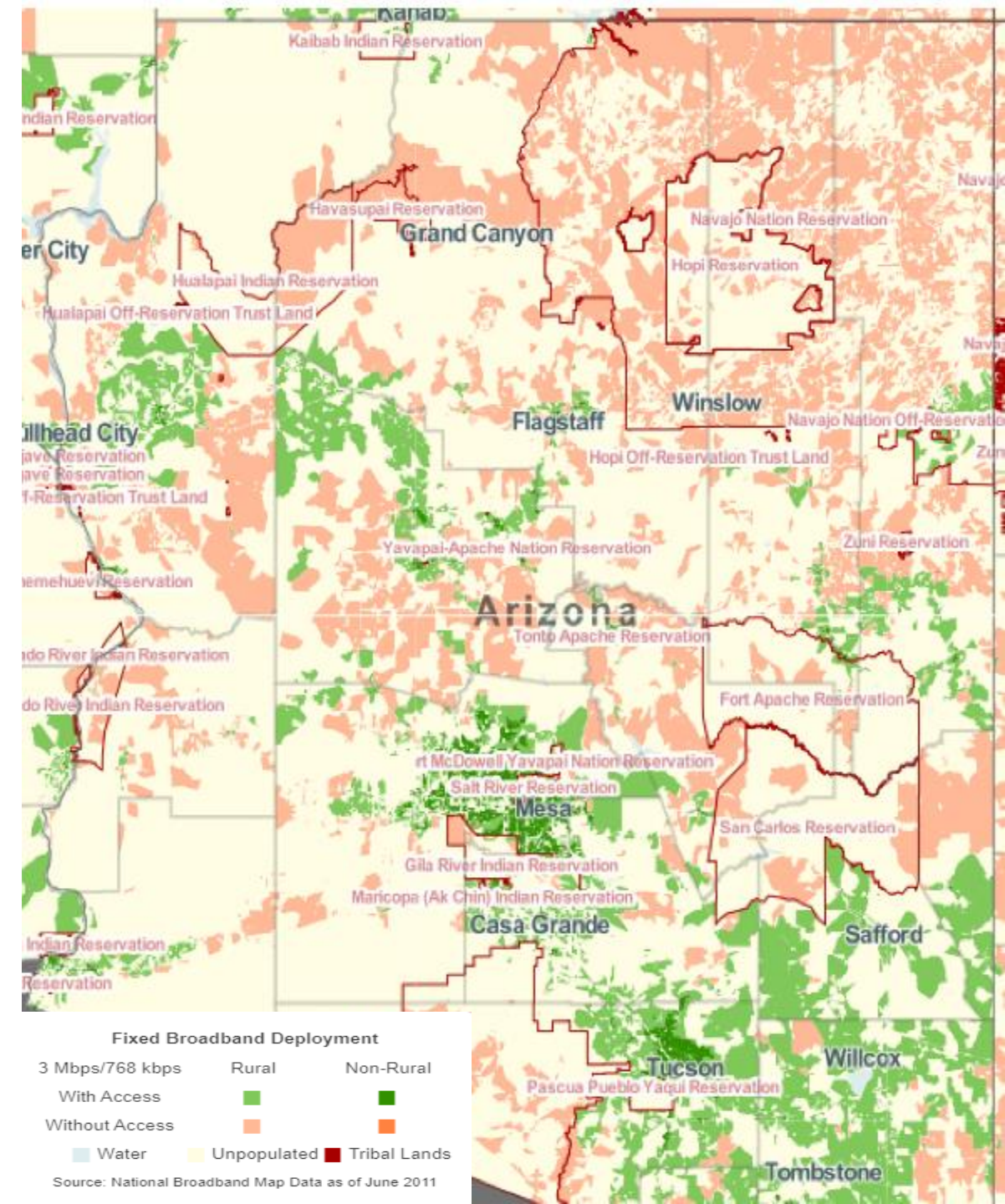
Welcome &
Introduction

Shelby Brown
Milan Eaton

Arizona Fixed Broadband - 2011

- Approximately 19 million Americans—6 percent of the population—still lack access to fixed broadband service at threshold speeds.
- In rural areas, nearly one-fourth of the population — 14.5 million people—lack access to this service.
- **In tribal areas, nearly one-third of the population lacks access.**

<https://www.fcc.gov/reports-research/maps/section-706-fixed-broadband-deployment-map/>

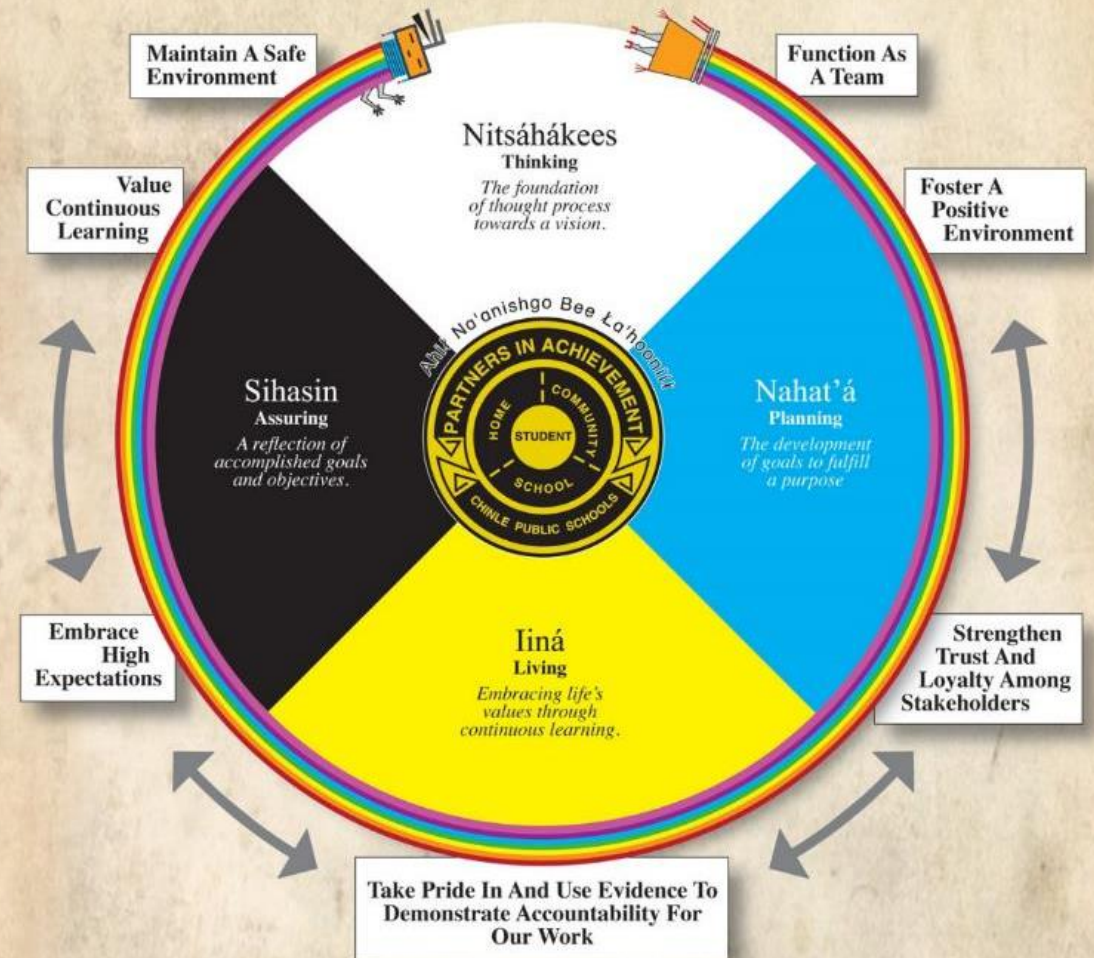


OUR VISION...

is to empower all students to be **Competitive, Unique, Successful & Driven** through an effective team of teachers, staff, governing board, families and community; in an environment dedicated to the value of continuous learning.

- <https://www.chinleusd.k12.az.us/#>

CHINLE UNIFIED SCHOOL DISTRICT NO. 24

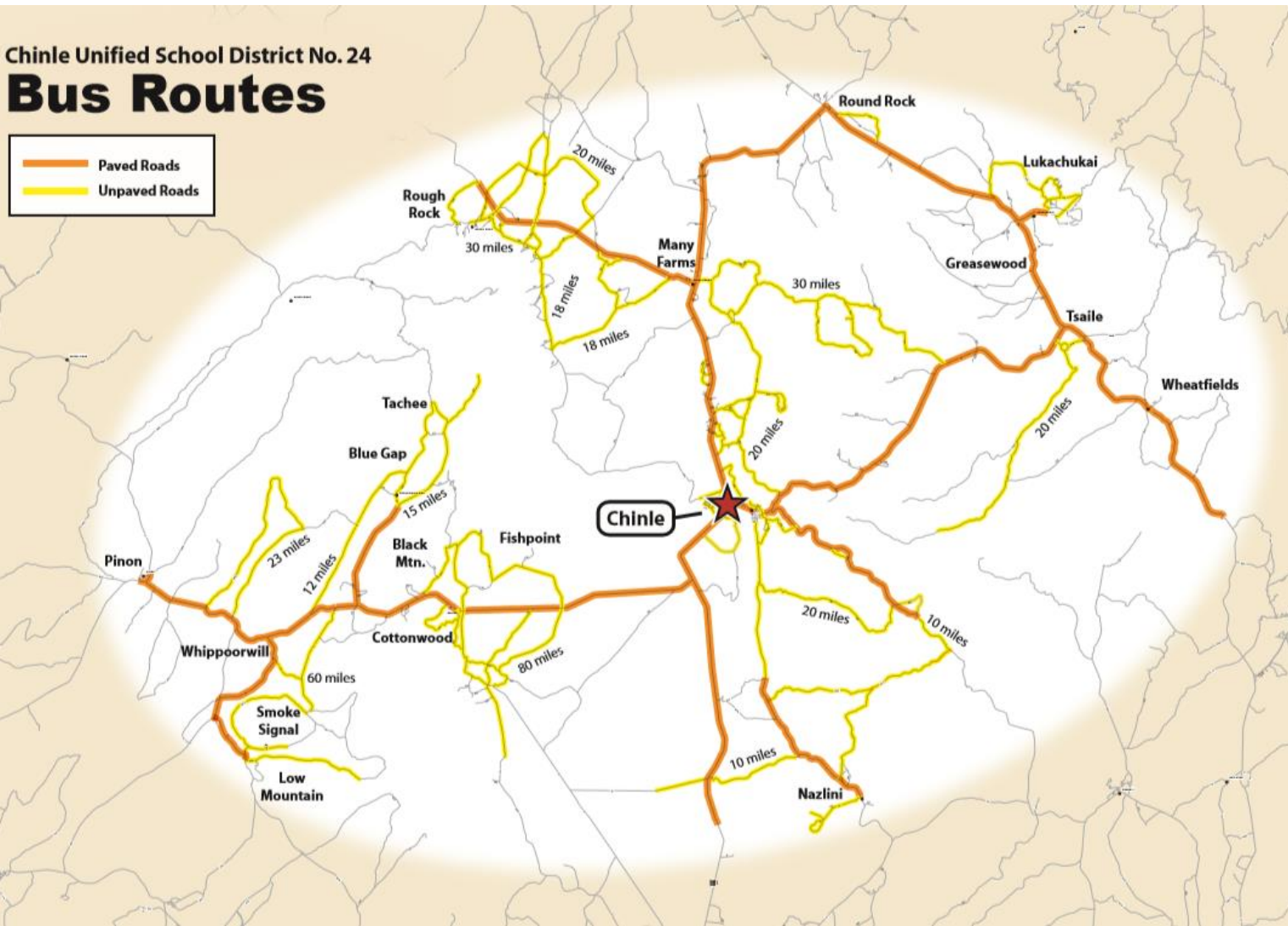


VISION STATEMENT

Our vision is to empower all students to be **Competitive, Unique, Successful, and Driven** through an effective team of teachers, staff, school board, parents, and community; in an environment dedicated to the value of continuous learning.

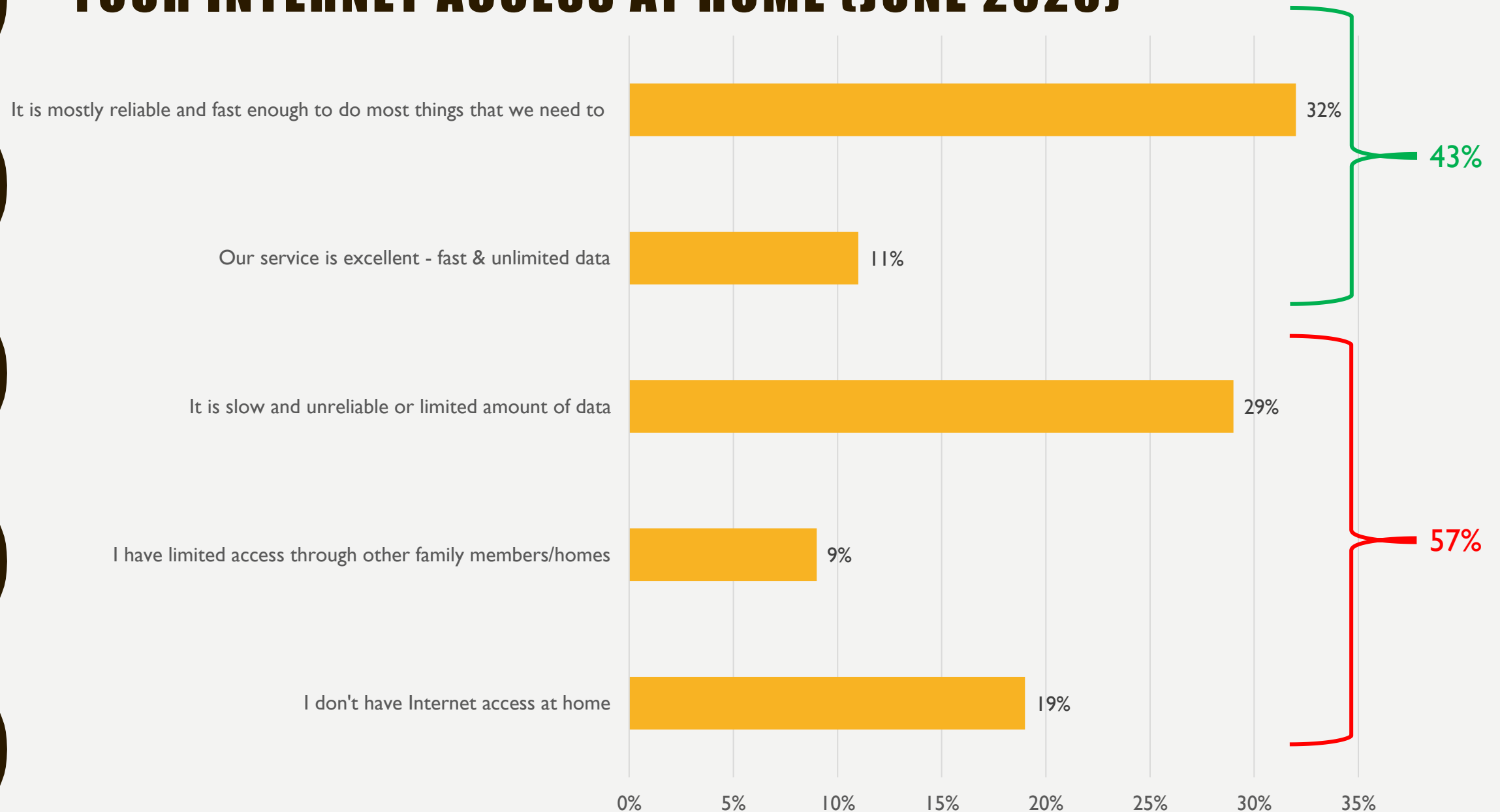
At a Glance

Superintendent: Quincy Natay
2017-2019 #1 Performing Reservation District for Academics
Home of the Wildcat Den and the Netflix Documentary
“Basketball or Nothing”



- 2023 - 3,341 students in grades PreK-12
 - 2022 - 67-75% In Person
 - 2021 - 100% Online
- 99% Native American (mostly Navajo)
- 4,200 square miles
- Busses log 6,000 miles *DAILY*
- 94% of our students qualify for free or reduced lunch
- 8 Schools:
 - 5 elementary schools; 4 preschools
 - 1 junior high & 1 high school
 - 1 Online School
- 10 Chapters/Communities
- 579 Employees
 - 258 Certified Teachers/Staff –
 - 79 (31%) alumni
 - 186 (70%) are Navajo
- Leadership
 - Superintendent - Navajo
 - 11 Central Admin – 45% Navajo (5)
 - 7 Principals 86% Navajo (6)

Q14: CHOOSE THE STATEMENT BELOW THAT BEST DESCRIBES YOUR INTERNET ACCESS AT HOME (JUNE 2020)





The critical difference: Thinking Ahead

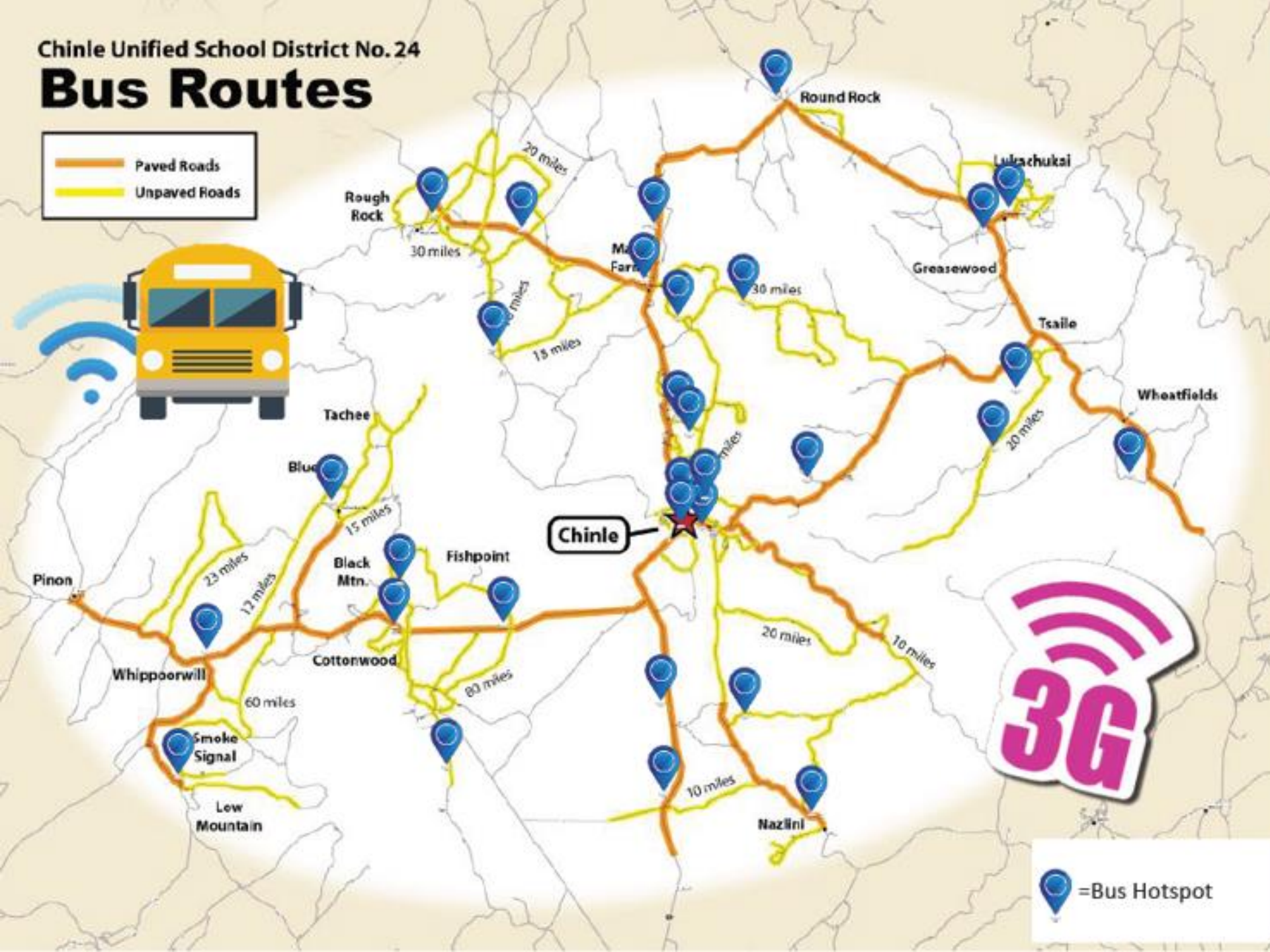
1. Superintendent Natay pushed us to order laptops and find hot spots **before** the shortages came in to play
2. Absolute to track devices
3. Split our synchronous learning time so that all 3,400 students would not be on the Internet at the same time



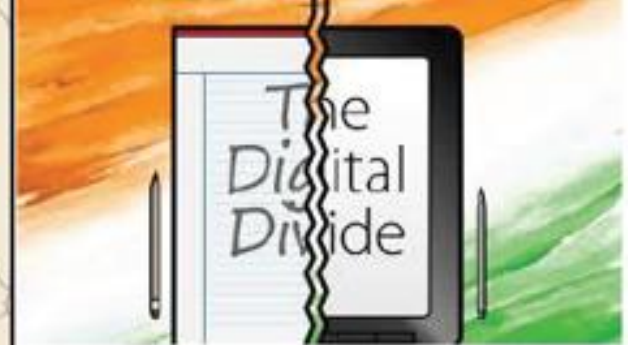


Chinle Unified School District No. 24

Bus Routes



=Bus Hotspot



3,353
PreK – 12
students

4,200
Square
Miles

715 (21%)
Can't access the Internet
*at all, and learn via paper
packet*

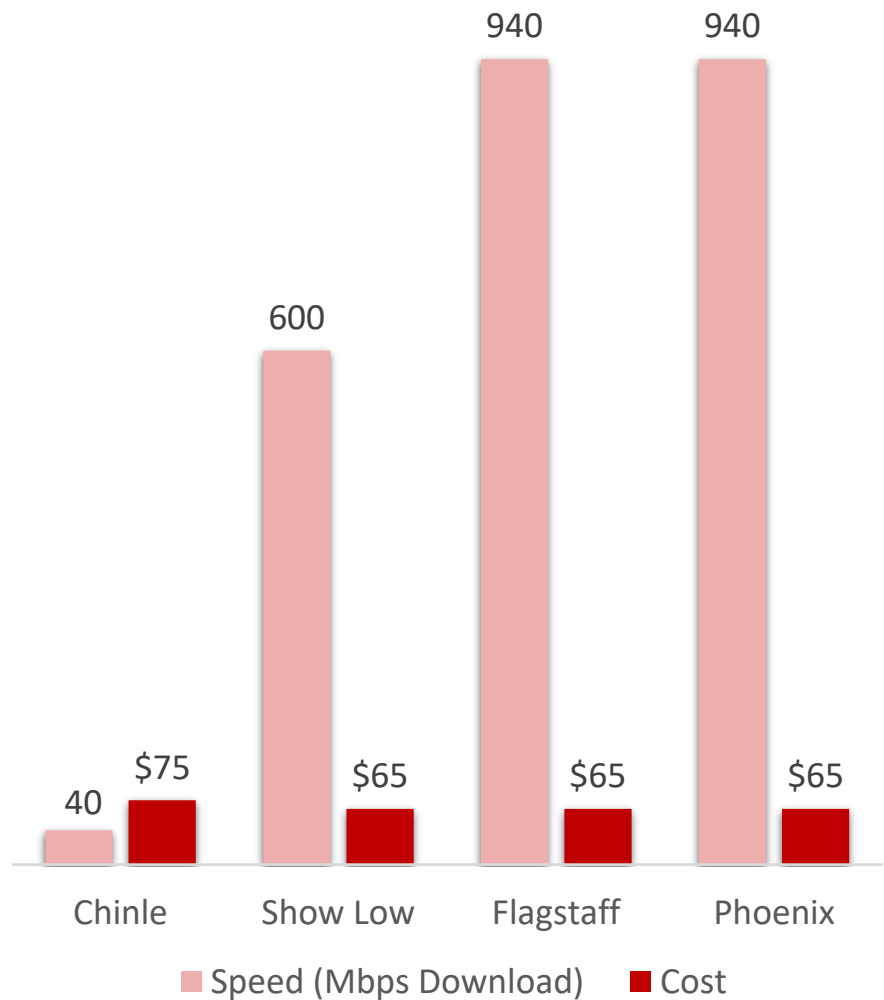
57%
Students have no internet
or slow unreliable
Internet

52%
2 or less
Mbs
Upload

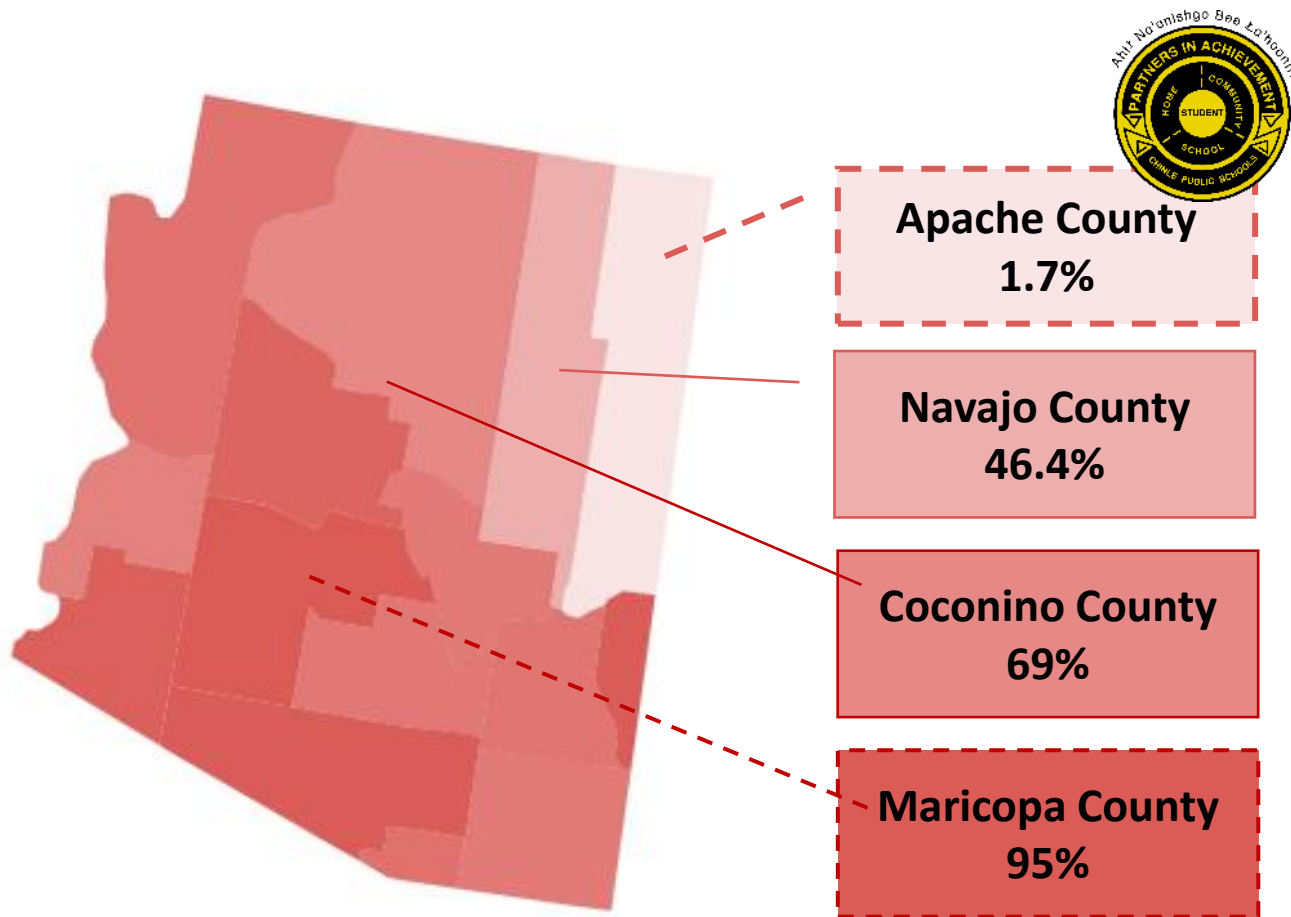
42%
2 or less
Mbs
Download

Infrastructure Challenge: Digital Divide

Cost of Speed
Remote v Urban



Percent of People with Access to Wired Broadband
(According to the FCC 25 Mbps Download & 3 Mbps Upload)



AZ Average Download Speed: 198.7 Mbps
AZ Rank in the US for Broadband Access: 36th



Challenges

- Broadband infrastructure outside CUSD – lack of fiber results in slow speeds & high costs
- Establishing need on a per family basis
 - Asked schools to survey families
 - Text blasted survey links and posted survey links on the Wildcat Facebook page (900 responses)
 - Forming a central office team that called and interviewed families who had not responded to the survey
- Lack of physical address system for homes
 - Longitude/Latitude had to be established for every home
 - Central office team dropping pins on a Google Maps and utilizing Endpoint software
- NTUA now is challenged by making contact with families



Where did the funding come from? What are the costs? Who pays?

- Title IV – First Hot Spots (waiver)
- ESSER – Hot Spots & Devices
- ECF
- E-Rate
- Using ECF we pay for the installation fees and monthly fees
- The family pays for any repairs needed (e.g. the dog chewed up the cable outside my house and it has to be replaced by NTUA)

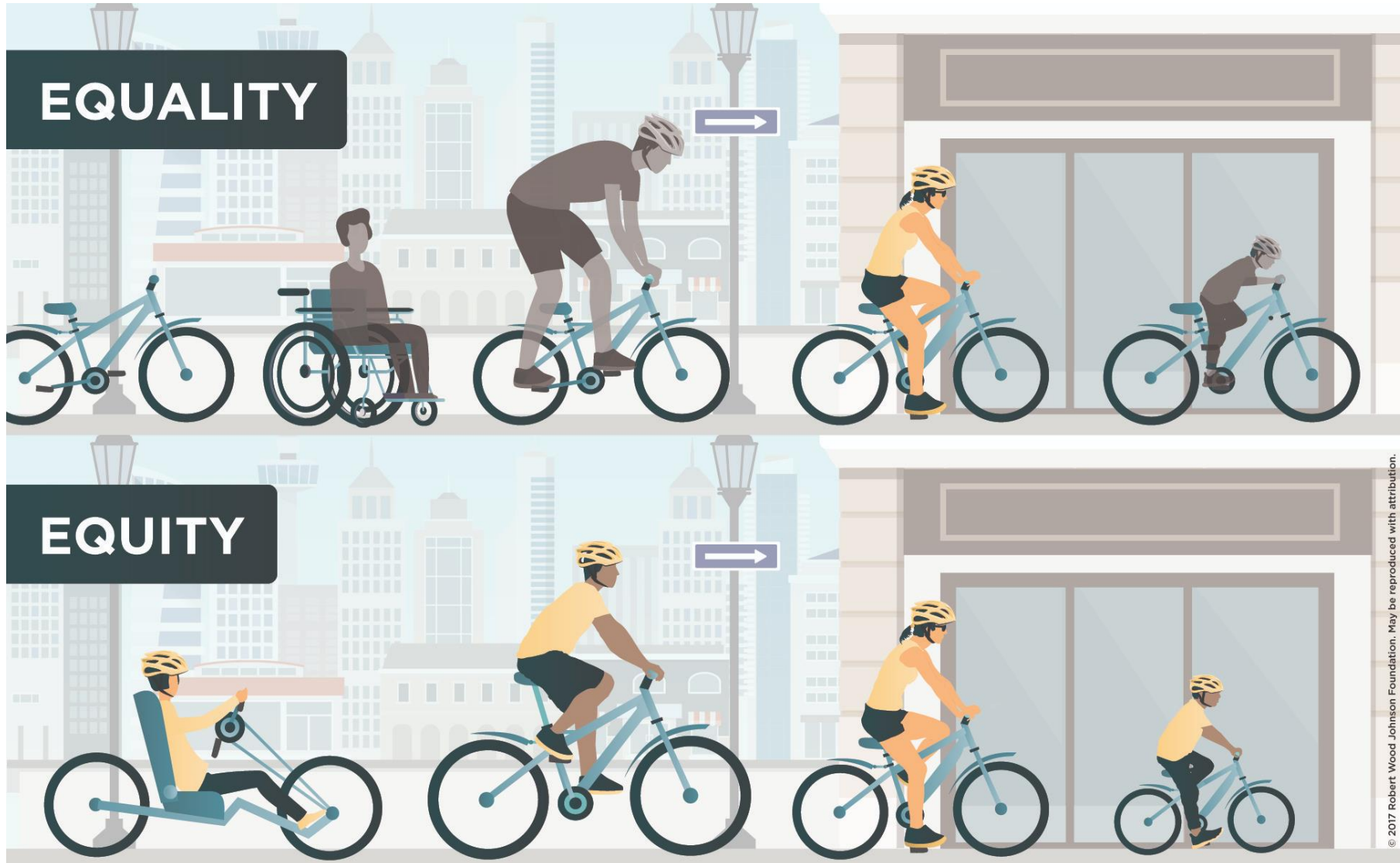


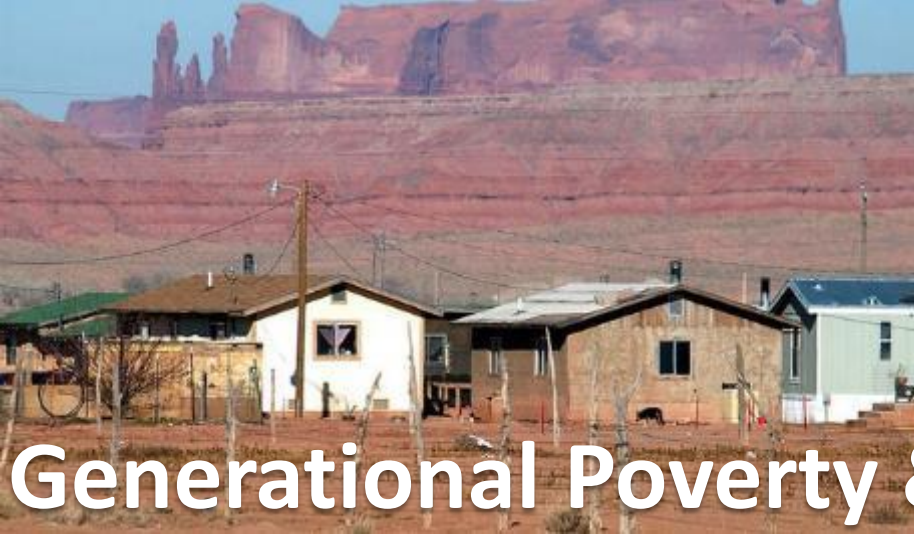
CIPA Compliance?

Technical Support?

- Student computers are set to sign in to the CUSD network once the student logs in
- For Internet tech support, families call the service provider
- For district issued device or software support the family contacts the school district
- Absolute has been a game changer for keeping track of and recovering devices

Q: Why must the digital divide be eliminated? A: Equity.





Generational Poverty & Historical Trauma

How might it look *different* tomorrow?



Lack of Infrastructure

Questions?





Exploration

Let's connect to see
how we can help you.



Thank You

Shelby Brown, State Erate Coordinator
Shelby.Brown@AZED.gov

Milan Eaton, State Erate Director
Milan.Eaton@AZED.gov
(623) 332-6357