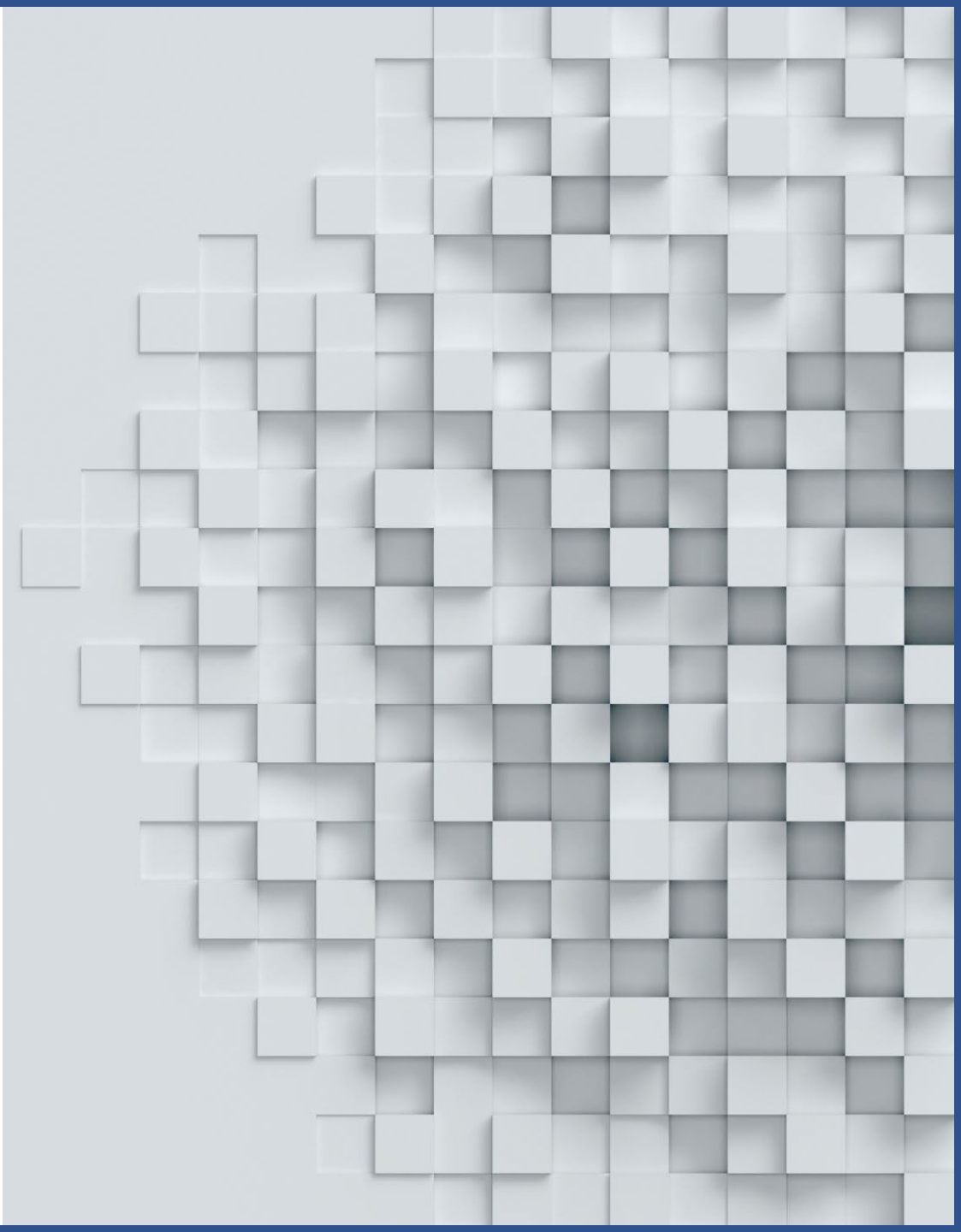


JOM Themed Office Hour Student Count

September 28 & 30, 2022



Equity for all students to achieve their full potential





United States Department of the Interior

BUREAU OF INDIAN EDUCATION
Washington, D.C. 20240

IN REPLY REFER TO:

DATE: September 1, 2022
TO: Johnson – O'Malley (JOM) Program Contractors
FROM: Spike Bighorn, Sovereignty in Indian Education (SIE) Program Manager
SUBJ: SY 2022-23 Student Count Form and SY 2023-24 Distribution Information

SPIKE
BIGHORN
Digitally signed by
SPIKE BIGHORN
Date: 2022.09.01
12:01:29 -05'00'

In accordance with the JOM Modernization Act, BIE will begin calculating the annual JOM distribution based upon the actual count of eligible JOM students reported from each JOM contractor (tribe/school) from the previous school year. Therefore, beginning with the SY 2022-23 Student Count reporting period, existing JOM contractors are encouraged to report all JOM eligible students attending their schools, as the SY 2022-23 student count will determine the SY 2023-24 JOM distribution. The SY 2022-23 Student Count Form is attached.

Additionally, BIE has set the SY 2022-2023 JOM Student Count week for **MONDAY, OCTOBER 10 – FRIDAY, OCTOBER 14, 2022**. Any JOM eligible student who attends a minimum of one (1) instructional day during that week may be counted for SY 2022-23. To avoid confusion during this first year, the deadline date for submission of the SY 2022-23 Student Count Form will remain June 1, 2023.

BIE
Memorandum

September
2022



Background

- Final student counts are due to ADE by May 17
- Worksheet template will be emailed to ADE grantees
- Counts are based on October 10-14 data



Casa Grande Elementary, JOM 2020



ADE Templates

		ELIGIBLE STUDENTS SERVED School Year 20XX - 20XX															
Grantee/Schools		Pre-K	K	1	2	3	4	5	6	7	8	9	10	11	12	Total Students Served	Total Schools
School District or Tribe Name		0	0	0	0	0	0	0	0	0	0	0	0	0	0	0	0
CTDS #	School Name															0	
CTDS #	School Name															0	
CTDS #	School Name															0	
CTDS #	School Name															0	
CTDS #	School Name															0	
CTDS #	School Name															0	
CTDS #	School Name															0	
																0	7

CTDS=County Code, Type Code, District Code & Site Number

		POTENTIAL ELIGIBLE STUDENTS for School Year 20XX-20XX															
Grantee/Schools		Pre-K	K	1	2	3	4	5	6	7	8	9	10	11	12	Total Potential Students	
School District or Tribe Name		0	0	0	0	0	0	0	0	0	0	0	0	0	0	0	0
CTDS #	School Name																0
CTDS #	School Name																0
CTDS #	School Name																0
CTDS #	School Name																0
CTDS #	School Name																0
CTDS #	School Name																0
CTDS #	School Name																0
																0	

The CTDS is a nine (9) digit number that the Arizona Department of Education uses to identify Arizona public and charter schools.

To find the CTDS number for a public school in Arizona, please visit the Arizona Department of Education's website at: <http://www.ade.az.gov/edd/>

Or try this list: https://azdor.gov/sites/default/files/media/PUBLICATION_ADESchoolListing.pdf

Definitions

- Eligible*
 - Age 3 - grade 12
 - Either:
 - At least **1/4 degree** Indian blood **descendant** of a member of a Federal recognized tribe
 - OR**
 - A **member** of a Federally recognized tribe
- Potential
 - Self-Identified Native American students who do not have documentation available to prove JOM eligibility as outlined above

** BIE is allowing grantees to include students who are known to be eligible but do not currently have documentation; documentation must be on file at time of an audit*



BIE 1994 Counts

* Funding is based on BIE counts

The October 2022 count will determine the FY24 funding allocation

	Grantee	BIE Count *	Oct 2021 Count	BIE vs Oct 21	JOM FY23 Students Served		Grantee	BIE Count *	Oct 2021 Count	BIE vs Oct 21	JOM FY23 Students Served
1	Ajo Unified District	121	76	(45)	74	15	Osborn Elementary District	295	146	(149)	151
2	Alhambra Elementary District	396	110	(286)	135	16	Phoenix Elementary District	221	46	(175)	50
3	Amphitheater Unified District	226	94	(132)	89	17	Phoenix Union HS District	327	756	429	750
4	Casa Grande Elementary District	323	294	(29)	400	18	Prescott Unified District	130	55	(75)	60
5	Chandler Unified District	66	248	182	282	19	Santa Cruz Valley UHS District	16	16	0	Waived
6	Creighton Elementary District	174	43	(131)	59	20	Scottsdale Unified District	130	153	23	30
7	Glendale Union High School	79	377	298	Waived	21	Stanfield Elementary District	130	55	(75)	55
8	Grand Canyon Unified District	81	89	8	91	22	Sunnyside Unified District	525	375	(150)	505
9	Isaac Elementary School District	29	missing		Waived	23	Tempe School District	171	564	393	1036
10	Kaibab Band of Paiute Indians	74	105	31	75	24	Tempe Union HS District	81	481	400	334
11	Madison Elementary District	208	177	(31)	181	25	Tolleson Union HS District	57	52	(5)	57
12	Marana Unified District	74	112	38	116	26	Tucson Unified District	500	776	276	210
13	Mesa Unified District	504	1051	547	504	27	Union Elementary District	73	missing		Waived
14	Murphy Elementary District	26	13	(13)	Waived	28	Yavapai-Apache Nation	256	383	127	383
							Totals	5293	6647	1456	5627



Public Law 115-404



Modernization Act

CONTRACTING PARTY STUDENT COUNT REPORTING COMPLIANCE.—

“(1) IN GENERAL.—For each academic year following the fiscal year for which an initial determination is made under subsection (b) to determine the number of eligible Indian students served or potentially served by a contracting party, the contracting party shall submit to the Secretary a report describing the number of eligible Indian students **who were served using amounts allocated** to such party under **this Act during the previous fiscal year**. The report shall also include an accounting of the amounts and purposes for which the contract funds were expended.

<https://www.congress.gov/115/plaws/publ404/PLAW-115publ404.pdf>



Timeline

Gather eligible and potential student counts based on October 10-14 data

- Student attended a minimum of 1 instructional day during the October collection period
- Eligible students (or known eligible pending documentation which will be available for an audit)
 - Tribal enrollment or
 - ¼ degree Indian blood descendent of enrolled member
- Potential students (for ADE input)

Inputs are due to ADE by May 17th for submission to BIE by June 1st

- Student counts from the October 10-14 data collection week
- Include potential students
 - Self-identified Native American students without proof of eligibility

Student count guidance on website, <https://www.azed.gov/oie/johnson-omalley-jom-program>



AZ JOM Quarterly Forum



Date: October 27, 2022
Time: 9am - 12pm MST

<https://www.azed.gov/oie/jom-forum>

Sign Up for JOM Forum Updates

