

# Summer Learning



## National Impacts

- Statewide Implementation
- District & Regional Adoptions
- School Level Innovation



## **CCSSO, NSLA Launch Network to Support Summer Learning**



**WASHINGTON, DC (April 26, 2021)** – The Council of Chief State School Officers (CCSSO) and the National Summer Learning Association (NSLA) are launching new efforts to support states with long-term strategies to transform how they leverage the summer months to improve student achievement.

The organizations have convened a network of nine states to promote community system-based strategies for summer learning. The partnership will also offer broad support to all states through webinars and dissemination of guidance and technical assistance.

## **9 State Cohort on Summer Learning**



# Reimagining Shifting the Climate and Culture of Summer Learning

 <b>Broad Distinctions Between Summer School vs. Summer Learning</b> 	
Summer School	Summer Learning
<ul style="list-style-type: none"> <li>• Remedial education</li> </ul>	<ul style="list-style-type: none"> <li>• Focuses on new and accelerated learning</li> </ul>
<ul style="list-style-type: none"> <li>• Academic, drill and skill</li> </ul>	<ul style="list-style-type: none"> <li>• Comprehensive, project-based, hands-on</li> </ul>
<ul style="list-style-type: none"> <li>• School building and district based</li> </ul>	<ul style="list-style-type: none"> <li>• Can take place in a variety of settings and locations</li> </ul>
<ul style="list-style-type: none"> <li>• Disengaging and punitive</li> </ul>	<ul style="list-style-type: none"> <li>• Exciting, engaging, and attractive program everyone wants to attend</li> </ul>
<ul style="list-style-type: none"> <li>• Mandatory for some students</li> </ul>	<ul style="list-style-type: none"> <li>• Strong emphasis on student voice, choice, and identity</li> </ul>
<ul style="list-style-type: none"> <li>• Adult-Driven</li> </ul>	<ul style="list-style-type: none"> <li>• Unique site climate &amp; culture with traditions/rituals</li> </ul>
<ul style="list-style-type: none"> <li>• Feels like traditional school</li> </ul>	<p>Adapted from NSLA's vision of the distinction between Summer School and Summer Learning</p>



# Summer Learning is a time to...



consider diverse needs and different factors

create opportunities based on uniqueness and needed variation



Childhood experiences



Housing



Education



Social support



Family income



Employment



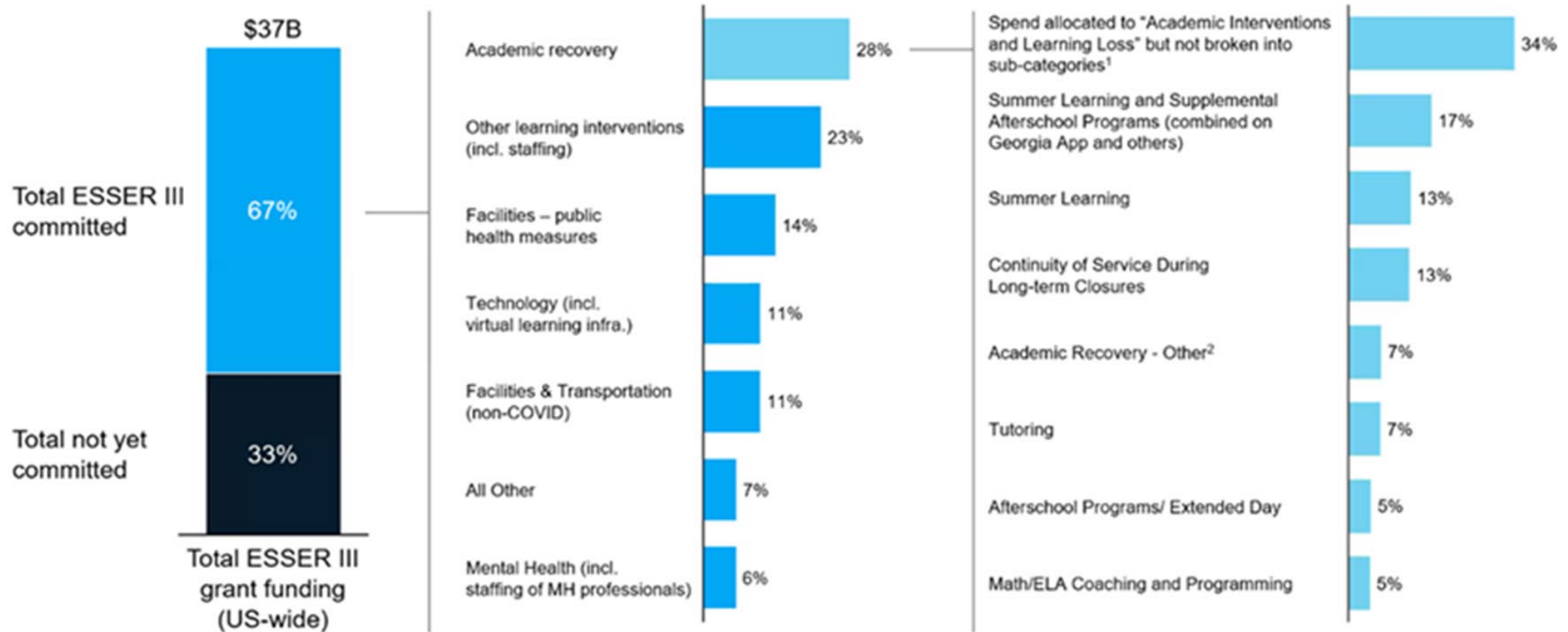
Our communities



Access to health services

# Summer Learning matters!

## About 30% of already committed ESSER III funding is going towards Academic Recovery programs



1. Jurisdictions have committed funds to the overall category "Academic Interventions and Learning Loss: Minimum 20%" but not detailed how that spend will be broken down further

2. Includes Academic Advising, Credit Recovery, Evidence-based Curriculum and Practices that Maximize Students' Social, Emotional and Academic Benefits, Extended School Year/ Weekend Learning, Interventionists, Reading, pre-k to 3rd grade, and Student Attendance/ Enrollment/Re-engaging Disconnected Youth

# How is ADE INVESTING in Summer Learning?

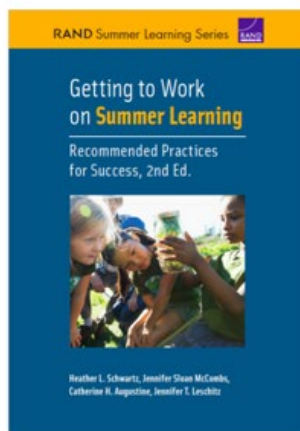
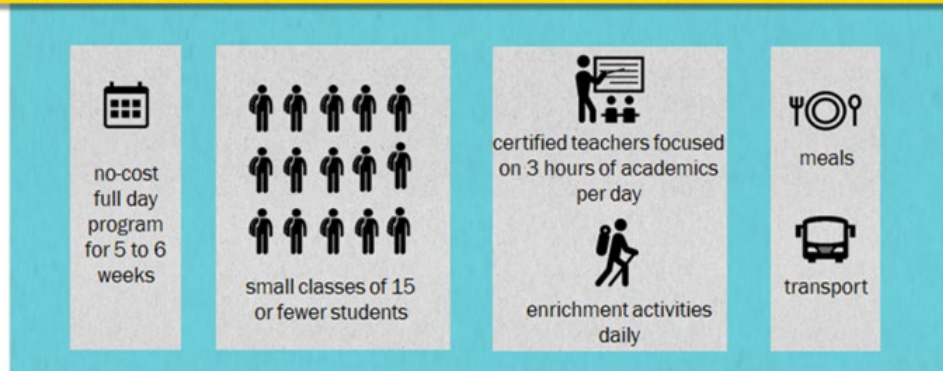
The American Rescue Plan stipulates that 20% of an LEA's total ESSER III award must be reserved to address learning loss through the implementation of evidence-based interventions, such as summer learning or summer enrichment, extended day, comprehensive afterschool programs, or extended school year programs.



**ARIZONA DEPARTMENT  
OF EDUCATION**



examined the effectiveness of a specific program model  
in five districts



## Evidence- Based Practices.

### \*RAND Summer Learning Recommendations (Preferred) (Based on RAND Research)

6+ hours per day	<u>Minimum Sufficient Time on Task</u> 90+ Minutes Math 120+ Minutes ELA 90+ Minutes Enrichment
Days per Week	5 days/week
Number of Weeks	5 weeks

Who and What needs to be targeted



**What the future  
may bring!**





Questions & Answers ?

