



Overview

OUR MISSION

Perfecting water for every person,
every place



MAJOR BARRIER TO DRINKING WATER IN ARIZONA

ACCESS



Major water supplies are threatened by drought

CONTAMINATION



Microplastics, PFAS, lead, arsenic E.coli, coliform, and other pollutants compromise water safety

RELIABILITY



97% of water systems in AZ with violations are small (>10K) where economics are challenging

COST & WASTE



Over 2.5 billion water bottles were sold in AZ in 2020; 91% of all plastic is not recycled



**TRANSFORMING WATER ACCESS BY TAPPING INTO THE
ABUNDANCE OF WATER... IN THE AIR**

MEET THE HYDROPANEL

Makes, stores and dispenses clean, mineralized water



Drinking water from
sunlight and air



Self-contained,
elegant design



Delivers water directly
to tap or faucet



Cloud-connected for monitoring
& optimization

HOW DOES SOURCE WORK?

- 1** Using solar PV, SOURCE takes in ambient air via fans & collects water vapor from that air onto a hygroscopic material
- 2** With heat from the sun, SOURCE converts water vapor collected into liquid water, made pure
- 3** The pure water is mineralized with magnesium & calcium to achieve an ideal taste profile
- 4** Sensors in each Hydropanel array monitor & optimize the water to maintain quality



SOURCE VALUE PROPOSITION



ACCESSIBILITY

Made on-site, SOURCE allows consumers, customers and communities to enjoy a resilient, transparent and high-quality supply of their own locally-made drinking water.



INDEPENDENCE

Because SOURCE does not require electric or water hookups, it operates independent of existing infrastructure.



PRICE

With a lifespan of 15 years, investing in SOURCE provides value years after the initial investment.



QUALITY

Drinking water is made pure from the start and is actively monitored to ensure it meets and exceeds quality standards across the world.



RELIABILITY

With no electric or water hookups needed, SOURCE produces drinking water without disruption in the face of drought, power outages or infrastructure failure.



RENEWABLE

Water is captured from the inexhaustible supply of moisture in the air, so local groundwater supply is left untouched and the result is a truly renewable water supply.



SUSTAINABILITY

Each Hydropanel offsets over 50,000 plastic bottles and over 100,000 liters of waste-water in its lifetime.



TASTE

Our curated mineral composition was designed for optimal taste, mouthfeel and alkalinity. Pristine and refreshing, it's how water should taste!



SCALABILITY

The size of a SOURCE installation can be scaled to meet the needs of any project, from residential to large jobsites.

SOURCE PROVIDES WATER RESILIENCY IN 52 COUNTRIES AROUND THE WORLD

SOURCE Hydropanels, relying solely on sunlight and air to produce high quality drinking water in a variety of climates, from very humid to very dry all around the world.

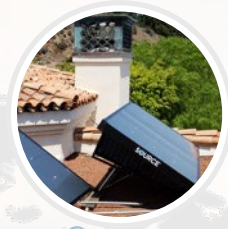


SOLVING WATER CHALLENGES: COMMERCIAL TO COMMUNITY

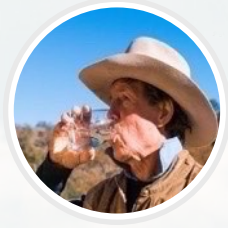
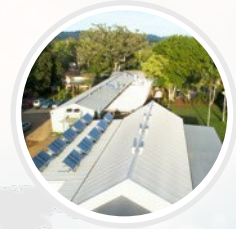
SUSTAINABLE CPG



SCALED RESIDENTIAL



HOSPITALITY



REMOTE WORKERS



REMOTE & DISTRESSED COMMUNITIES




SCHOOLS



Case Studies

SOURCE



CREATING SAFE DRINKING WATER FOR LOS COLONIAS

La Presa & Santa Teresita, Texas

CHALLENGE

There are more than a thousand “colonias,” or small, unincorporated towns along the U.S.-Mexico border, many of them without basic services – including, clean, safe drinking water. In Santa Teresita and La Presa, there is little running water at all, and residents were traveling nearly 20 miles to buy bottled water, a heavy financial burden and one that kept them from other pursuits.

SOLUTION

Today, SOURCE® Hydropanels installed at two community centers are giving these town’s 2,000 people access reliable, and safe water produced in their own community and with no need for traditional infrastructure.



SERVING HOMES WHERE SAFE WATER IS OUT OF REACH

The Navajo Nation

CHALLENGE

More than 40 percent of the homes on Navajo Nation have no running water, and unregulated drinking water is the greatest public health risk to the community. But with 175,000 people spread across more than 27,000 square acres, traditional piped water infrastructure isn't a realistic or affordable solution

SOLUTION

To date, Navajo Nation leaders have installed Hydropanels at 547 homes across the Nation, giving residents access to clean, safe drinking water, often for the first time in generations. These families no longer travel miles, and sometimes hours for clean water, and many say SOURCE® water is a dream come true.

[Video](#) [In the news](#)

“As a community and as a Nation, we have to embrace technology, and I'm grateful for this project, because these folks have drinking water, every day. It's needed. It's needed all over the Reservation.”

JERRY WILLIAMS, PAST LECHEE CHAPTER PRESIDENT



© 2022, SOURCE Global, PBC. All Rights Reserved. Confidential.

© 2022, SOURCE Global, PBC. All Rights Reserved. Confidential.



SOLVING A CENTURY-OLD WATER QUALITY ISSUE BY TAPPING THE SKY

Tulare County, Central Valley

CHALLENGE

Allensworth has been plagued by arsenic in its water for more than 100 years, with contamination sometimes rising 60 percent above safe levels. New infrastructure is out of reach for this disadvantaged community, forcing residents to travel to the next county to buy drinking water in single-use plastic bottles.

SOLUTION

SOURCE® Hydropanels located at a community center are giving the people of Allensworth safe, high-quality drinking water for the first time in decades, and SOURCE technology is now part of the local school's STEM education curriculum.

[Video](#) [In the news](#)

“ With the resilience and vision of the people here, we are taking control of our future and ensuring that we consider all sustainable and regenerative processes in our decision making. SOURCE® Hydropanels fit into the community's plans for a viable option for the delivery of sustainable drinking water.”

KAYODE KADARA, COMMUNITY LEADER

© 2022, SOURCE Global, PBC. All Rights Reserved. Confidential.

© 2022, SOURCE Global, PBC. All Rights Reserved. Confidential.



CREATING RESILIENCE FOR FARM MANAGERS

Manulife Investment Management (MIM), Tulare County, Calif.

CHALLENGE

In the midst of California's worst drought since 1977, farmland is being fallowed, while farming operations and farm laborers are working in record-breaking heat. Meanwhile, the law requires employers to give farmworkers access to drinking water that is "fresh, pure, and suitably cool," and "located as close as practicable" to their worksites.

SOLUTION

As part of its commitments to environmental responsibility and its workers, MIM is placing 640 SOURCE® Hydropanels on a two-acre plot of land not being farmed due to tough growing conditions, made worse by drought. This sustainable water farm will produce clean, fresh drinking water and ice for farm workers, sustainably and at a lower cost.

“This new capability, enabling drinking water production for essential workers, where and when they need it, is consistent with our commitment to investing in bringing sustainable solutions to our clients.”

BRANDON SPAIN, SENIOR REGIONAL MANAGER, MANULIFE FARMLAND MANAGEMENT SERVICES

© 2022, SOURCE Global, PBC. All Rights Reserved. Confidential.

© 2022, SOURCE Global, PBC. All Rights Reserved. Confidential.



PROJECT STRUCTURES

CAPEX PURCHASE

- Upfront cost then all water is free
- Can scale to meet any drinking water need
- No daily operations and minimal annual O&M

WATER PURCHASE AGREEMENT (WPA)

- Mirrors Solar PPA
- \$0 Upfront - \$0 annual O&M
- Monthly water bill @ fixed volume pricing
- Simple to add homes & communities for future growth



HOW TO SUPPORT ARIZONIANS

INCREASE ELIGIBILITY INTO EXISTING STATE PROGRAMS

- Drought Resilience
- Rural Water
- Public Health

CREATE NEW PROGRAMS TO REACH AREAS OF MOST NEED

- Communities without piped water supply
- Small systems with contamination
- Well owners
- Remote areas of public parks & trails



SOURCE®

Robert Bartrop & Ylenia Aguilar