



**Arizona Department of Education  
Nita M. Lowey 21<sup>st</sup> Century Community Learning  
Centers presents:**

# **Annual Report 2020-2021 Year in Review**

**pub. July 2021**





**Arizona Department of Education  
Nita M. Lowey 21st Century Community Learning Centers**



The Arizona Department of Education (ADE) is committed to **Equity for All Students to Achieve Their Full Potential.** Arizona's 21st CCLC programs represent a critical component of the State's initiative.



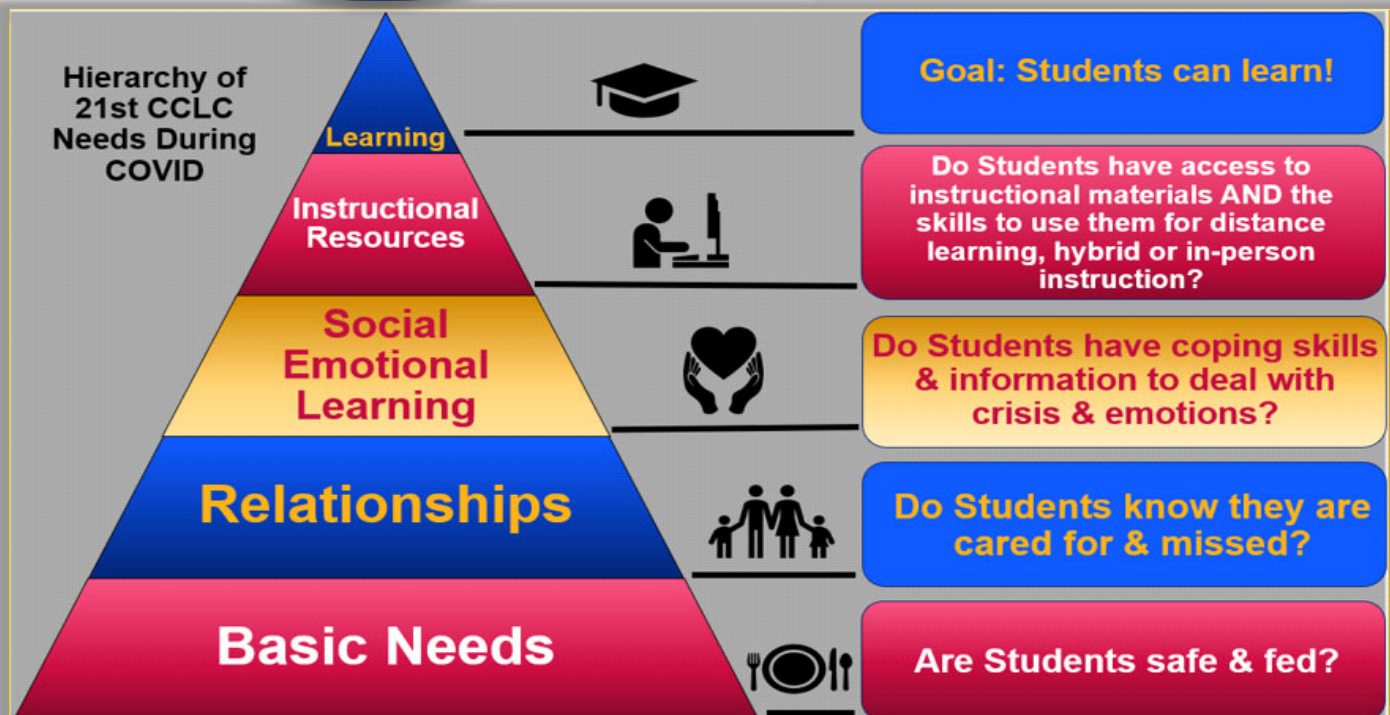
**We equip Arizona students to realize their potential**

***21st CCLC Programs Play Important Role In Arizona***

21st CCLC programs complement and expand on the regular school day by providing high quality academic enrichment opportunities for students, and meaningfully engaging the community and adult family members in helping their children succeed academically.

# Pandemic Focus Shift

STUDENTS CAN LEARN when in distance, hybrid or in-person learning. Arizona's 21st CCLC Title IV-B programs provide essential supports for students, their families and the whole school community which are critically important during the pandemic years.



ADDRESSING THE HIERARCHY OF NEEDS. 21st CCLC programs have the flexibility to support the reality that many layers of needs must be addressed in order for learning to occur. This flexible support is the primary purpose of 21st CCLC programs; to support students' academic success through a myriad of methods.



# By the Numbers

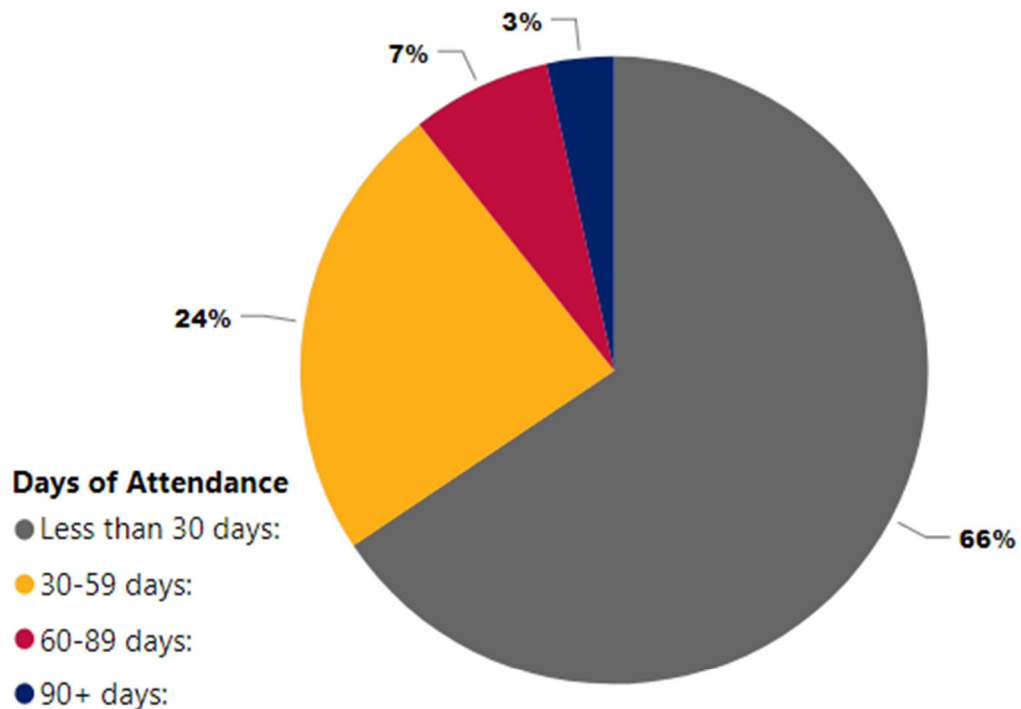
## Student Participation in 2020-2021



**23,240 Students**

**Served in 211 21st CCLC Centers  
across Arizona**

### Days of Programming Attended



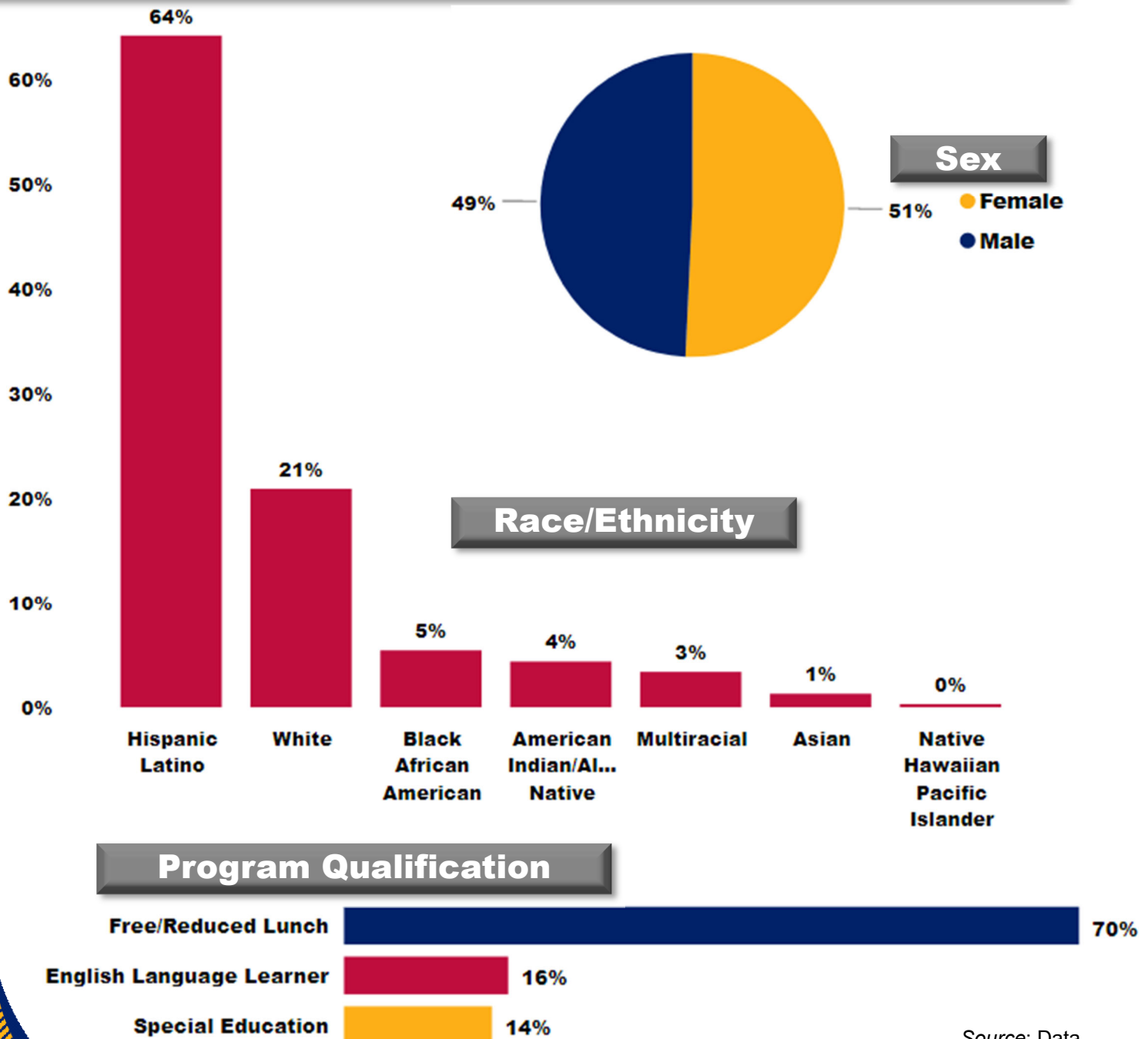
Source: Data  
from AzEDS  
2021

**Students who attend 30  
days or more are considered  
“Regular Attendees”**



# Digging Deeper into the Data

## Student Participant Demographic Data for 2020-2021



Source: Data from AzEDS 2021

## Professional Development Offerings 2020-2021

Source: Data from  
21st CCLC PD  
offerings 2021

| PD Event Name                             | # of Registered Participants | # of Hours        |
|-------------------------------------------|------------------------------|-------------------|
| GLO Modules                               | I. 97<br>II. 104             | 1.5               |
| Leadership Conference<br>w/ <u>AzCase</u> | 566                          | 4.0               |
| Share-Fair Cooperative<br>Extension (UA)  | 62                           | 4.0               |
| Grant Writing Basics                      | 142                          | 2.0               |
| All Eyes on Summer<br>Learning            | 41                           | 2.0               |
| Get to Know New<br>GPRAs                  | 85                           | 1.0               |
| <b>TOTALS:</b>                            | <b>1,097 participants</b>    | <b>14.5 hours</b> |

## Grantee Partnerships 2020-2021

The 2020-2021 year was hard in a lot of ways but community partners stepped up to support programs all across Arizona.



### 535 External Partnerships

Reported across all 21st CCLC programs



### \$1.5m

Total Estimated Value of External Partnerships

Source: Data from  
Spring Annual  
Performance  
Reports 2021

# ADE 21st CCLC Annual Customer Satisfaction Survey: Preliminary Results 2020-2021

## Collaboration



*Strongly Agree/Agree:*

*ADE 21st CCLC staff work in collaborative manner with district/ school/ site program leaders.*

## Communication



*Communication completely and effectively covers the scope of the topic addressed.*

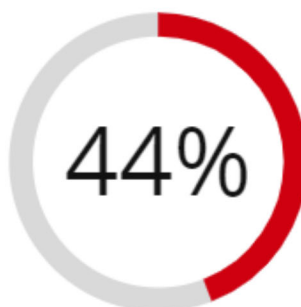
**Respondents shared...**

## Overall Satisfaction



*Very Satisfied/Satisfied*

## Training



*If you could identify one thing that could to do increase your satisfaction with our service, what would it be?*

Each year, the ADE 21st CCLC team surveys their stakeholders, including coordinators, site administrators, district leaders, and other out of school time leaders in the field who work with ADE staff.

The 21st CCLC team uses the results of this survey to determine future areas of focus and action steps to improve quality customer service to the field.

Source: Data from 21st CCLC Customer Satisfaction Survey 2021

**Number of surveys completed: 310 | Response Rate: 56%**



# Family Engagement

This year, COVID-19 may have changed family engagement in how it was delivered but sites reported rising to the challenge by delivering new and exciting opportunities outside of the traditional box.

In our 2021 Customer Satisfaction survey, 23% of respondents reported that family engagement had increased this year while 28% reported that it stayed the same from previous years.

By the numbers, total summer participation jumped dramatically, up 1700% from summer 2019 levels. Fall participation was down 20% and spring participation down 28% from the spring 2020 term.

**Adult Family  
Members  
served by programs  
in 2020-2021:**

**Summer: 1,958**

**Fall: 16,434**

**Spring: 20,895**

In the FY21 Customer Satisfaction Survey, one respondent from the field shared: "... we were able to come up with some successful new ways to still engage families such as a drive thru trunk or treat, drive through festival of lights for Christmas, online zoom Paint night for families, nailed it cooking challenges and online zoom family cooking classes." Another noted with pride: "[Families] knew that we are here for them"

Source: Data from  
Annual Performance  
Reports and Customer  
Satisfaction Survey



# NASA Challenge Wrap Up

On Tuesday May 18, 2021, the ADE's 21st CCLC team hosted a virtual viewing party of NASA challenge participants' final projects. Each team shared a video of their project and then answered live questions from NASA Scientist Aaron Yazzie. The recording of the event can be found here: <https://vimeo.com/552599643>.

Welcome to  
Arizona's  
First 21<sup>st</sup> CCLC  
Culminating NASA  
Space Challenge



ARIZONA DEPARTMENT  
OF EDUCATION



YOUTH

## Congratulations!

The following schools are representing Arizona in the 2020-2021

# NASA STEM CHALLENGE

Roadrunner After School Academies – Marana School District, Percy L. Julian Middle School – Roosevelt School District, Salida del Sol Elementary School – Crane School District, Williams Elementary/Middle School, Valley Horizon – Crane School District, Pensar Academy, J.B. Sutton Elementary – Isaac School District, P.T. Coe Elementary – Isaac School District, Esperanza Elementary – Isaac School District, Manzo Elementary School – TUSD

[y4y.ed.gov/STEMChallenge/NASA](https://y4y.ed.gov/STEMChallenge/NASA)





## Looking Ahead at FY22

### 21st CCLC Title IV-B Grant Competition

In the most recent FY22 Cycle 17 competition, the 21st CCLC Team received:



**129** Total Applications



**48** Total New Awardees in FY22



**\$14,526,800** Total funds requested in FY22 Cycle 17



**37** Sites that claimed and received Rural Designation Priority Points.

**NEW in Cycle 17**

### Totals: FY22 Grantees

| Sites in...  | # of Sites | Total Award Amount     |
|--------------|------------|------------------------|
| Year 1       | 48         | \$5,631,600.00         |
| Year 3       | 44         | \$5,114,400.00         |
| Year 3       | 74         | \$8,550,000.00         |
| Year 5C      | 36         | \$3,746,000.00         |
| <b>Total</b> | <b>202</b> | <b>\$23,042,000.00</b> |

This was the first competition with Rural Designation Priority Points using the National Center for Education Statistics. (<https://nces.ed.gov/ccd/schoolsearch/>)



# 2021-2022 21st CCLC Funded Sites

**202 Arizona grantees in 2021-2022 program year**

**48 new sites  
AWARDED for  
2021-2022!**

**Coconino  
(4)**

**Apache  
(--)**

**Mohave  
(7)**

**Navajo  
(--)**

**Northern Arizona**

**16**

**Central Arizona**

**101**

**Southern Arizona**

**85**

**By Region**

**Yavapai  
(5)**

**La Paz  
(--)**

**Maricopa  
(99)**

**Gila  
(--)**

**Greenlee  
(--)**

**Yuma  
(24)**

**Pinal  
(2)**

**Graham  
(--)**

**Pima  
(55)**

**Cochise  
(3)**

**Santa  
Cruz (3)**

**Since 2017, the ADE has awarded over  
\$119 million to Arizona grantees!**



The ADE supports 21st CCLC programs in each region of Arizona. Regional and state-wide trainings, on-site and web-based technical assistance, along with peer mentoring enable successful programs regardless of location or availability of local resources.

## About Us

### Arizona Department of Education

#### Highly Effective Schools Division

#### 21st CCLC Unit

400 W. Congress St., Box 33

Tucson, AZ 85701

Phone: 520-638-4294

E-mail: [21stCCLCInbox@azed.gov](mailto:21stCCLCInbox@azed.gov)

## Unit Staff

Catherine Land Evilsizor, Director

Doreen Candelaria

Emma Chavez

Secily Meza Downes

Dawn Fitzhugh

Ray Gee

Lisa Kluge

Kim Logan

Rita Miller

Anderson Yazzie

Trish Zilliox

***Any reference obtained from this to a specific product, process, or services does not constitute or imply an endorsement by the ADE of the product, process, or service, or its producer or provider. The views and opinions expressed in any referenced document do not necessarily state or reflect those of ADE.***

***The Nita M. Lowey 21<sup>st</sup> Century Community Learning Centers (21<sup>st</sup> CCLC) Title IV-B program is funded by a federal grant from the U.S. Department of Education and administered by the Arizona Department of Education.***

For more information visit:  
<https://www.azed.gov/21stcclc/>

The Arizona Department of Education is an Equal Opportunity Employer.

Printed in Phoenix, Arizona,  
by the Arizona Department of Education.

Copies: 500, Total Cost: SXXXX,  
Unit Cost: \$XX.XX

Date: July 2021

*The Arizona Department of Education does not discriminate on the basis of race, religion, color, national origin, sex, disability or age in its programs, activities or in its hiring and employment practices.*

For questions or concerns regarding this statement, please contact Administrative Services at 602-542-3186.

