



Did you know your program can use the Professional Learning grant funds, which is 10% of the total Adult Education grant award, to join these professional organizations?

**ANN:** Adult Numeracy Network (see our spotlight section)!

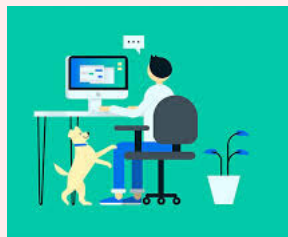
**Learning Forward:** is a professional organization, that is dedicated to help educators plan, implement, and measure high-quality professional learning so you and your team can achieve success in your program and with your students. The ADE-AES grant contract requires that professional learning, at the local and state levels, align to the **Standards for Professional Learning**. Become a Learning Forward member to access research and evidence based practices, tools, publications, and webinars.



Don't forget the impact of an **AALL** membership! AALL members receive a free membership to **MPAEA** and **COABE**! You must join AALL to receive this offer; it does not work the other way around! For more information, check out the AALL website or contact AALL president, Laura Porfirio at lporfirio@pima.edu

### NATIONAL STUDENT SURVEY

Please ask your students to complete this short survey on their transition to online learning. The survey closes on **June 30th**. Please send this **link** to your students. Results will be posted in early July in the LINCS Integrating Technology group. Should you have questions, you can contact djrosen123@gmail.com.



### BREAKING NEWS!

The **2020 Arizona Adult Education Institute** is moving online! Join us for our premier Virtual Institute from September 8th -12th. The Institute schedule and registration information will be available in mid-July. Stay tuned for more information!

### FEATURED RESOURCES TO SUPPORT STANDARDS-BASED INSTRUCTION (click for hyperlinks)

#### ABE English Language Arts:

**Reading Skills for Today's Adults** - (RSTA) is a fantastic, free, leveled library designed to provide extensive reading and fluency practice for early level readers. Currently, the vocabulary and comprehension exercises are available within the Word document provided for each story. A good resource for ELAA teachers also!

#### ABE and English Language Acquisition:

**Critical Practices for Anti-Bias Education from Teaching Tolerance** -This critical practices guide offers practical strategies for creating a space where academic and social-emotional goals are accomplished side by side. The guide also provides valuable advice for implementing culturally responsive pedagogy and describes how teachers can bring anti-bias values to life.

### FEATURED RESOURCES FOR PROGRAM ADMINISTRATORS AND INSTRUCTIONAL LEADERS

Check out the **site** that Harvard University has created that features best practices on remote teaching strategies. The article covers best practices for platforms and norms, expectations, and accessibility, as well as tips on presenting curricula and keeping students engaged. The site includes additional resources that teachers may find useful. Check out the entire **Teach Remotely** resource!

### SPOTLIGHT ON ADULT NUMERACY NETWORK: PROFESSIONAL LEARNING FOR ABE MATH TEACHERS!



What is **ANN**?

The Adult Numeracy Network is a community dedicated to providing quality mathematics instruction for adult education practitioners. Members have access to professional learning, collaboration, and leadership opportunities, and help influence policy and practice in adult math instruction.

The website has recently been updated and there are a plethora of activities to enhance the teaching and learning of math. Be sure to click on the **ANN Under 10** section where you might find a few familiar faces! Be sure to check out **The Math Practitioner Newsletter**, which is full of engaging and challenging material that adult education students really enjoy.

Follow this **link** for details on ANN membership and group rates for organizations. ANN has wonderful resources for adult educators!