

State Performance Plan/ Annual Performance Report

FFY 2017

Indicator 3B &
3C

State Assessment
Participation Rate
in ELA and Math

State Assessment
Proficiency rate in
ELA and Math

Indicator 3B Statewide Assessment Participation Rate



Uses the same data & targets as is used for reporting under Title I of the ESSA

Calculate separately for reading and math

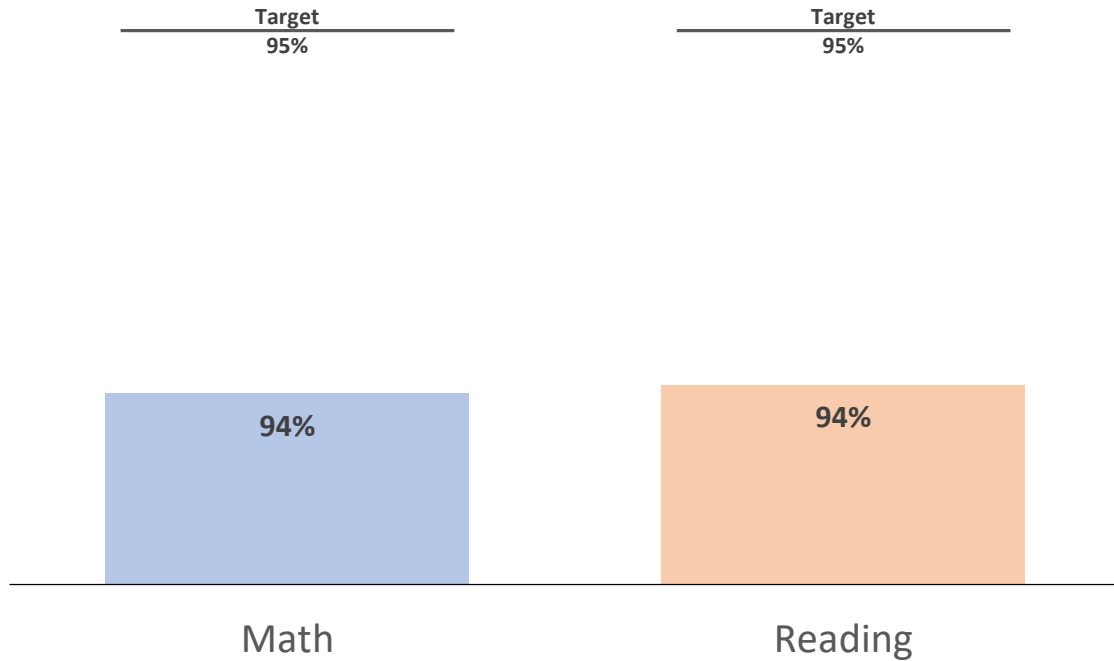
Includes students with IEPs who participated in AzMERIT & MSAA

Includes children with IEPs enrolled for full academic year & those not enrolled for a full academic year.

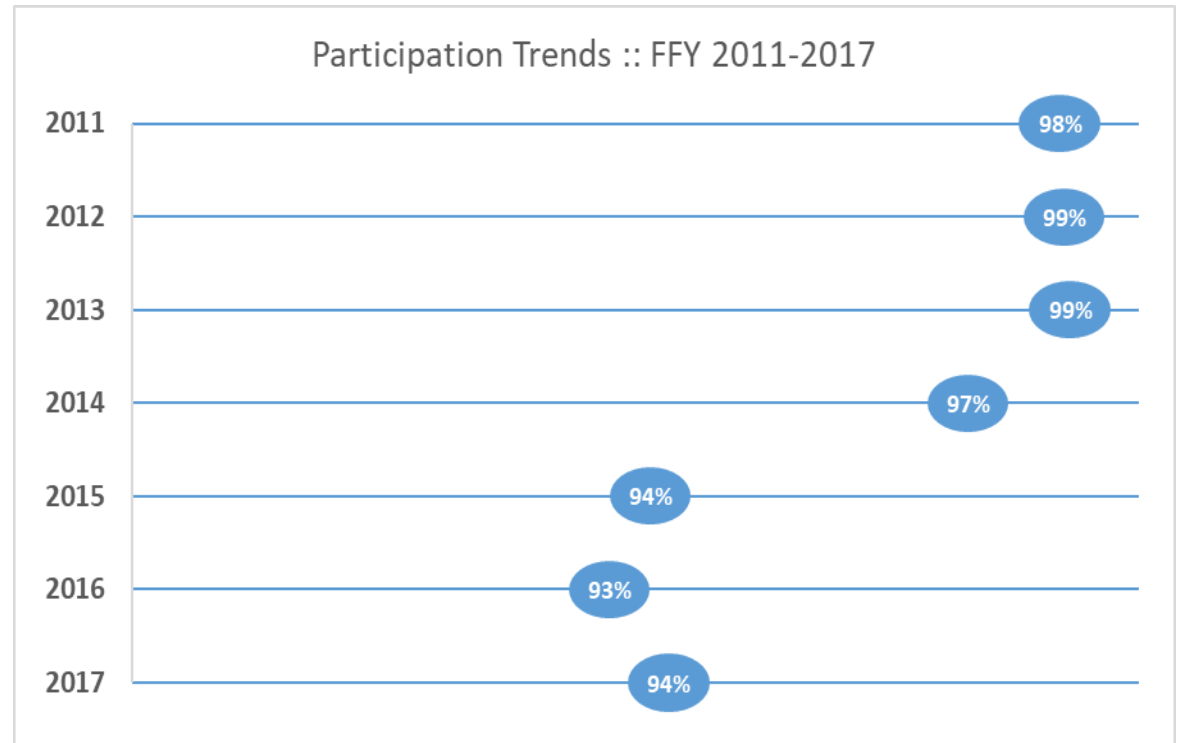
Calculation: % of children w/ IEPs participating ÷ total children w/ IEPs enrolled during the testing window.

Assessment Participation Rate

Indicator 3B Participation :: FFY 2017



Participation Trends :: FFY 2011-2017



Indicator 3C :: Statewide Assessment Proficiency Rate

Calculation:

- % of children with IEPs scoring at or above proficiency ÷ children w/IEPs receiving a valid score & assigned proficiency level.

ESSA:

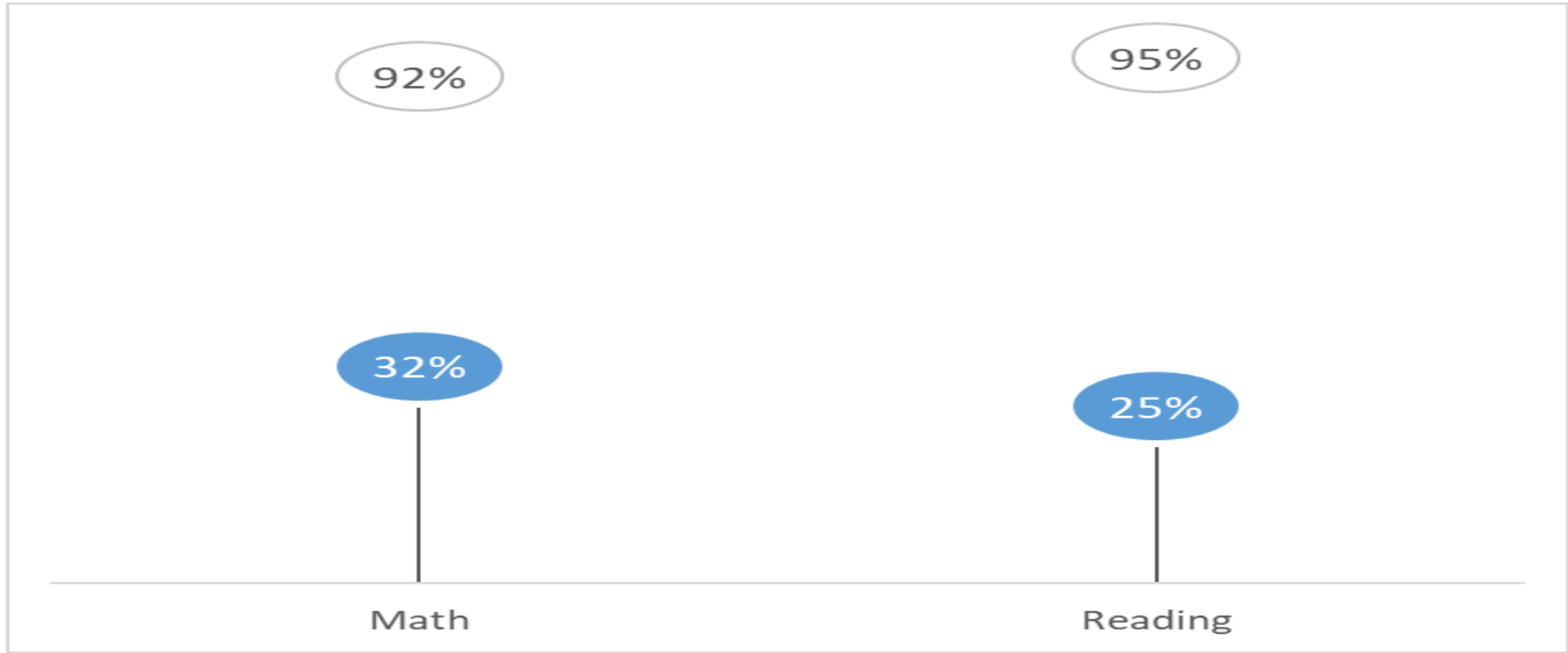
- Data & Targets are the same as reported by State under Title I of ESSA

Includes:

- All ESSA grades assessed (3rd-8th & HS)
- All children w/ IEPs at the time of testing
- All students w/ IEPs who participated in AzMERIT & MSAA

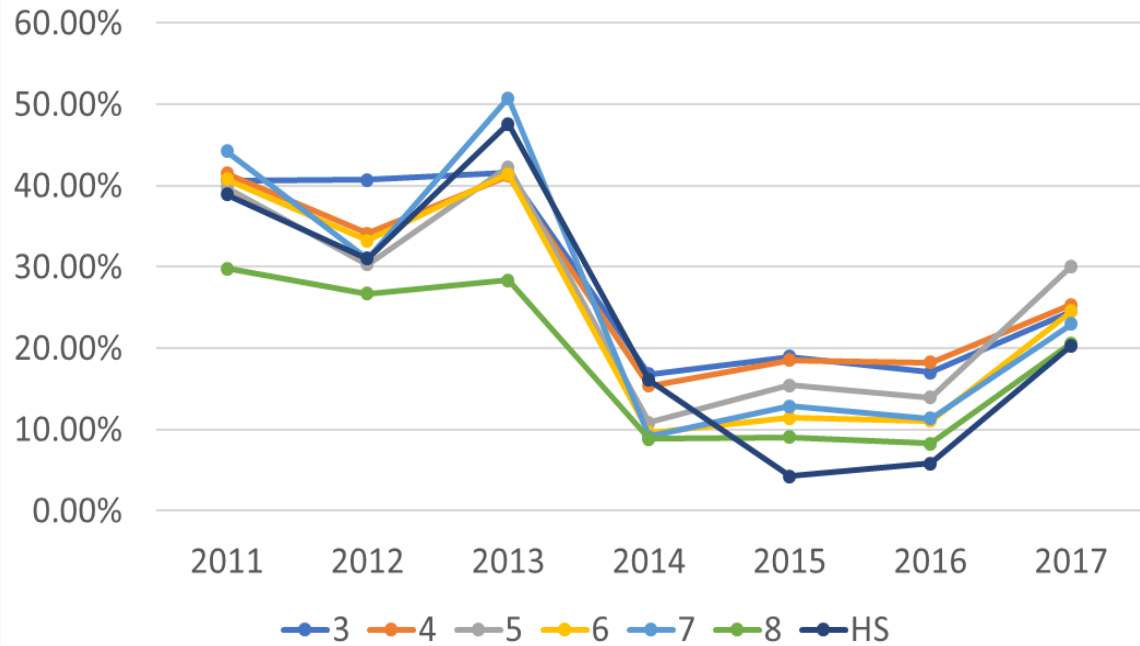
Additional Information:

- Calculations and targets set separately for reading/language arts & math by grade level



Assessment Proficiency Rate

ELA Proficiency Trends :: FFY 2011-2017

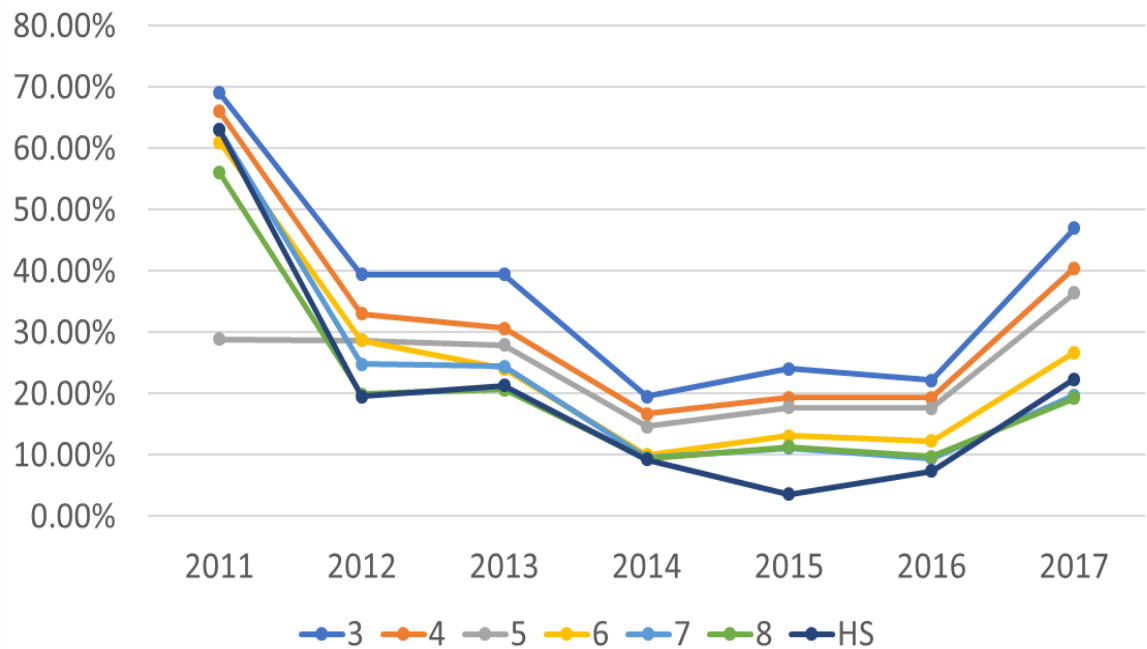


Grade	2011	2012	2013	2014	2015	2016	2017
3	40.6%	40.7%	41.6%	16.8%	19.0%	17.0%	24.5%
4	41.5%	34.1%	41.2%	15.4%	18.5%	18.2%	25.3%
5	39.8%	30.3%	42.3%	10.8%	15.4%	14.0%	30.0%
6	40.8%	33.2%	41.5%	9.6%	11.4%	11.0%	24.6%
7	44.2%	31.0%	50.7%	9.1%	12.9%	11.3%	23.0%
8	29.8%	26.7%	28.3%	8.8%	9.1%	8.3%	20.6%
HS	38.9%	31.0%	47.6%	16.1%	4.3%	5.8%	20.3%

ELA Proficiency by Grade

Math Proficiency by Grade

Math Proficiency Trends :: FFY 2011-2017



Grade	2011	2012	2013	2014	2015	2016	2017
3	69.0%	39.4%	39.4%	19.5%	24.1%	22.1%	46.9%
4	66.0%	33.0%	30.6%	16.7%	19.4%	19.3%	40.4%
5	28.9%	28.7%	27.9%	14.6%	17.7%	17.6%	36.4%
6	61.0%	28.7%	24.1%	10.0%	13.1%	12.3%	26.7%
7	63.0%	24.8%	24.4%	9.6%	11.1%	9.4%	19.8%
8	56.0%	19.9%	20.7%	9.4%	11.4%	9.7%	19.2%
HS	63.0%	19.5%	21.3%	9.3%	3.6%	7.4%	22.3%

Questions -
Comments



Thank you for your time & commitment

- Chris Brown :: Chris.Brown@azed.gov
- Connie Hargis :: Connie.Hargis@azed.gov

